



VERDANA II
RESIDENCE

ABOUT REPORTAGE

Reportage Properties is one of the largest private developers in the United Arab Emirates, with projects in UAE, Egypt, Turkey, Morocco, and upcoming international projects.

We are focused and consistent in our objective to provide innovative, modern, and affordable housing solutions that not only offer our investors an outstanding value but also provide the home buyers a safe place to live in.

Our mission is to be amongst the most trusted real estate companies in the UAE by developing and providing homes that are equally elegant and affordable and provide you with a sense of belonging. We look forward to the upcoming years, and aspire to expand our real estate business globally.

We Build
Homes With
Unparalleled
Elegance and
Comfort.



ريپورتاج العقارية

تمثل شركة ريبورتاج العقارية واحدةً من أكبر مطوري العقارات الخاصة في دولة الإمارات العربية المتحدة بمشروعات قائمة في أبوظبي ودبي و مصر و تركيا و المغرب، و مشاريع دولية أخرى ضمن الخطة.

وتركز الشركة في هدفها المتمثل في تقديم حلول إسكان مبتكرة وحديثة وبأسعار في المتناول، وهي حلول من شأنها أن توفر قيمة متميزة.

تتمثل مهمة ريبورتاج العقارية في أن تكون أولى شركات العقارات الأكثر ثقة في دولة الإمارات العربية المتحدة، وذلك من خلال تطوير و توفير منازل تجمع بين الأناقة و العملية و متاحة للجميع، و تمنح ساكنيها الشعور بالانتماء. تتطلع بثقة إلى الأعوام القادمة ونطمح إلى توسيع نطاق أعمالنا العقارية على مستوى العالم.

منازل تحظى بمزايا و راحة لا تضاهى



IN THE HEART OF DUBAI NEXT TO GREEN COMMUNITY

Where residents can benefit from the area's strategic location in addition to the community activities. Furthermore, it is well connected to the city's core economic centres and provides quick access to major routes such as Sheikh Zayed Road and Emirates Road, with close proximity to Dubai's attractions.



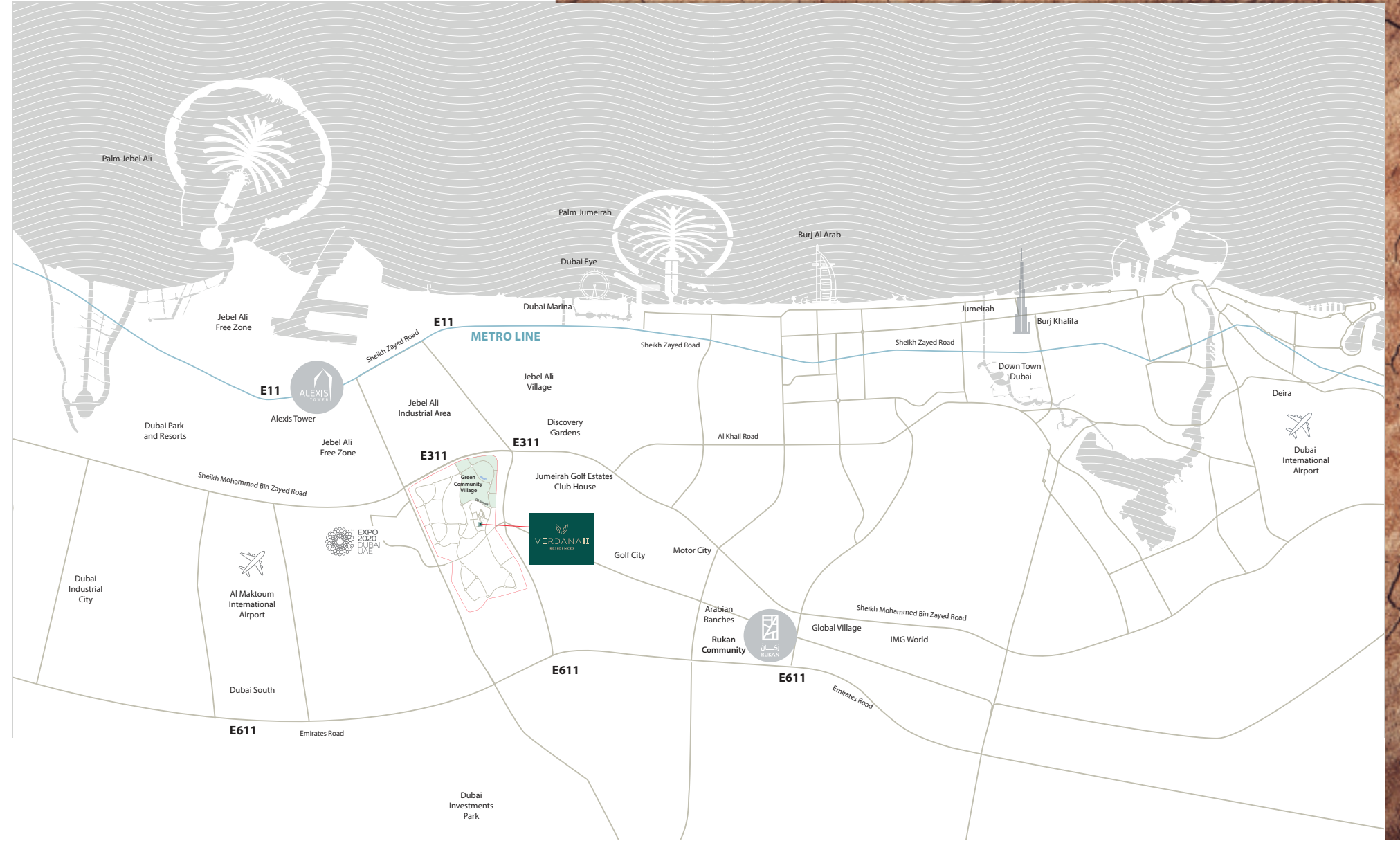
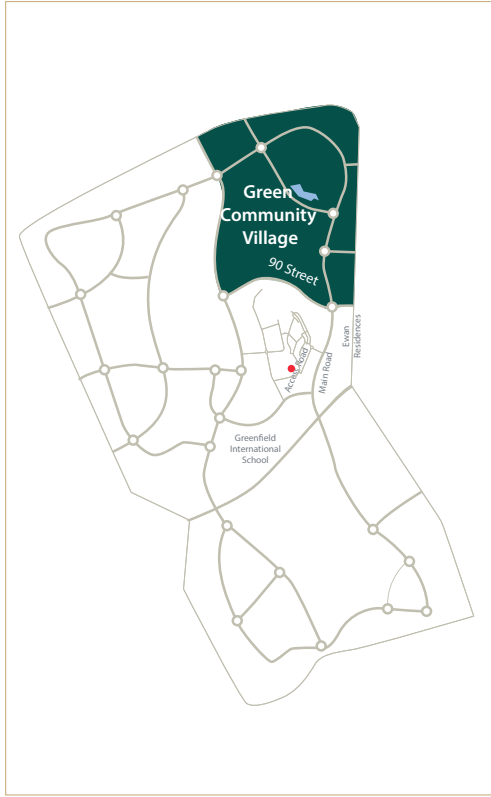
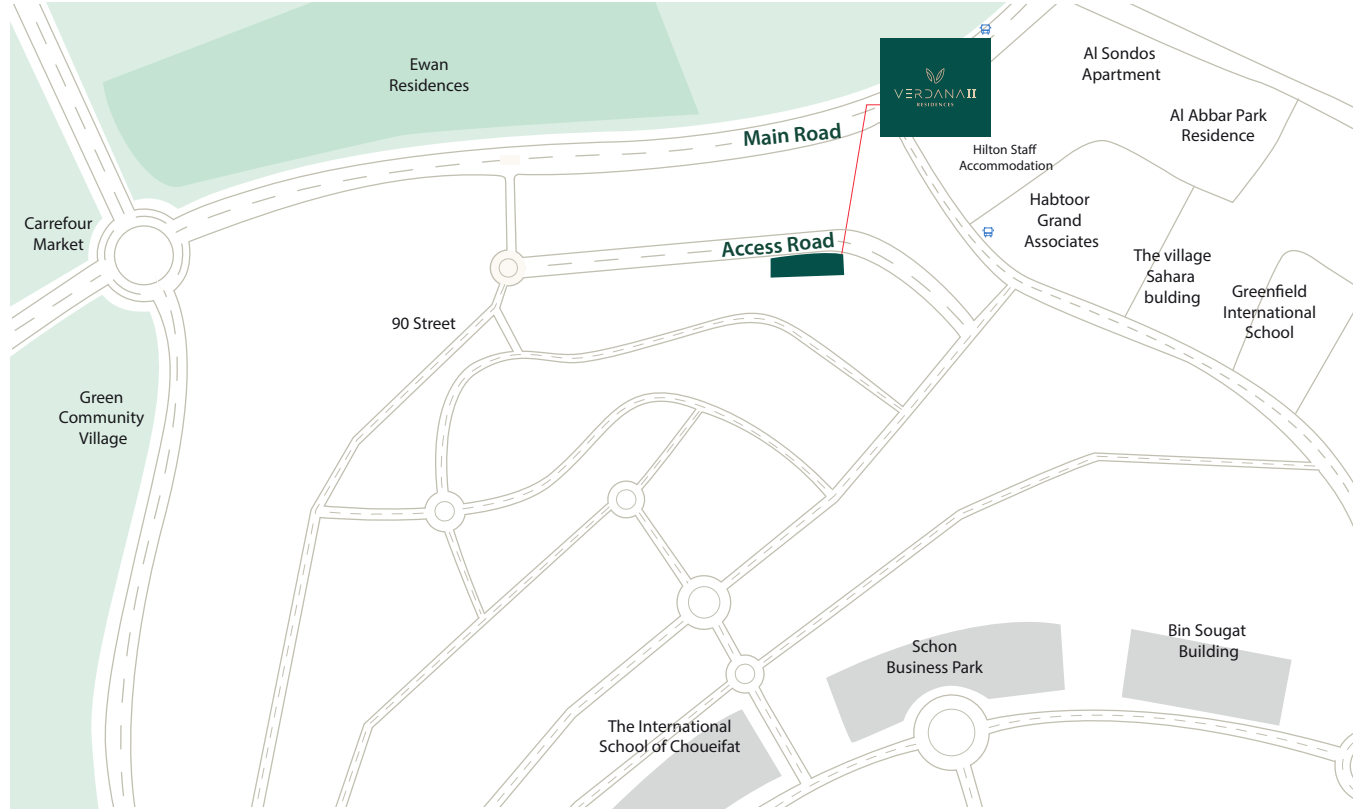
كن على
اتصال بالمستقبل

—
*Stay
Connected to
the future*

في قلب دبي بجوار جرين كوميونيتي

حيث يمكن للسكان الاستفادة من الأنشطة المختلفة و الموقع الاستراتيجي للمنطقة. علاوة على ذلك، فهو يتمتع باتصال جيد بالمراكز الاقتصادية الأساسية في المدينة مع سهولة الوصول إلى الطرق الرئيسية مثل شارع الشيخ زايد و شارع الإمارات، و على مقربة من أشهر معالم دبي.





كن جزءا من الصورة..

كن على اتصال بالعالم من حولك

STAY A PART OF THE BIGGER PICTURE..
STAY CONNECTED TO THE WORLD

18 MIN driving to Dubai Marina

20 MIN driving to Palm Jumeirah

21 MIN driving to Global Village

23 MIN driving to Mall of The Emirates

24 MIN driving to IMG World

26 MIN driving to Burj Khalifa/Dubai Mall

18 MIN driving to Dubai Park and Resorts



VERDANA RESIDENCE 2

Another architectural gem is added to the luxury collection of Verdana community. Verdana Residence 2 is a beautiful blend of modernity and natural serene views.

The building offers a contemporary lifestyle for those who seek privacy, functionality and a resort-like living experience within the bustling life of Dubai, all with high-quality finishing, modern facades, and world-class facilities that brings the all the city life to your doorstep.

فيردانا ريزيدنس 2

جوهرة معمارية أخرى قد تم إضافتها إلى المجموعة الفاخرة لمجتمع فيردانا. فيردانا ريزيدنس 2 هو مزيج رائع من العصرية والمناظر الطبيعية الهادئة.

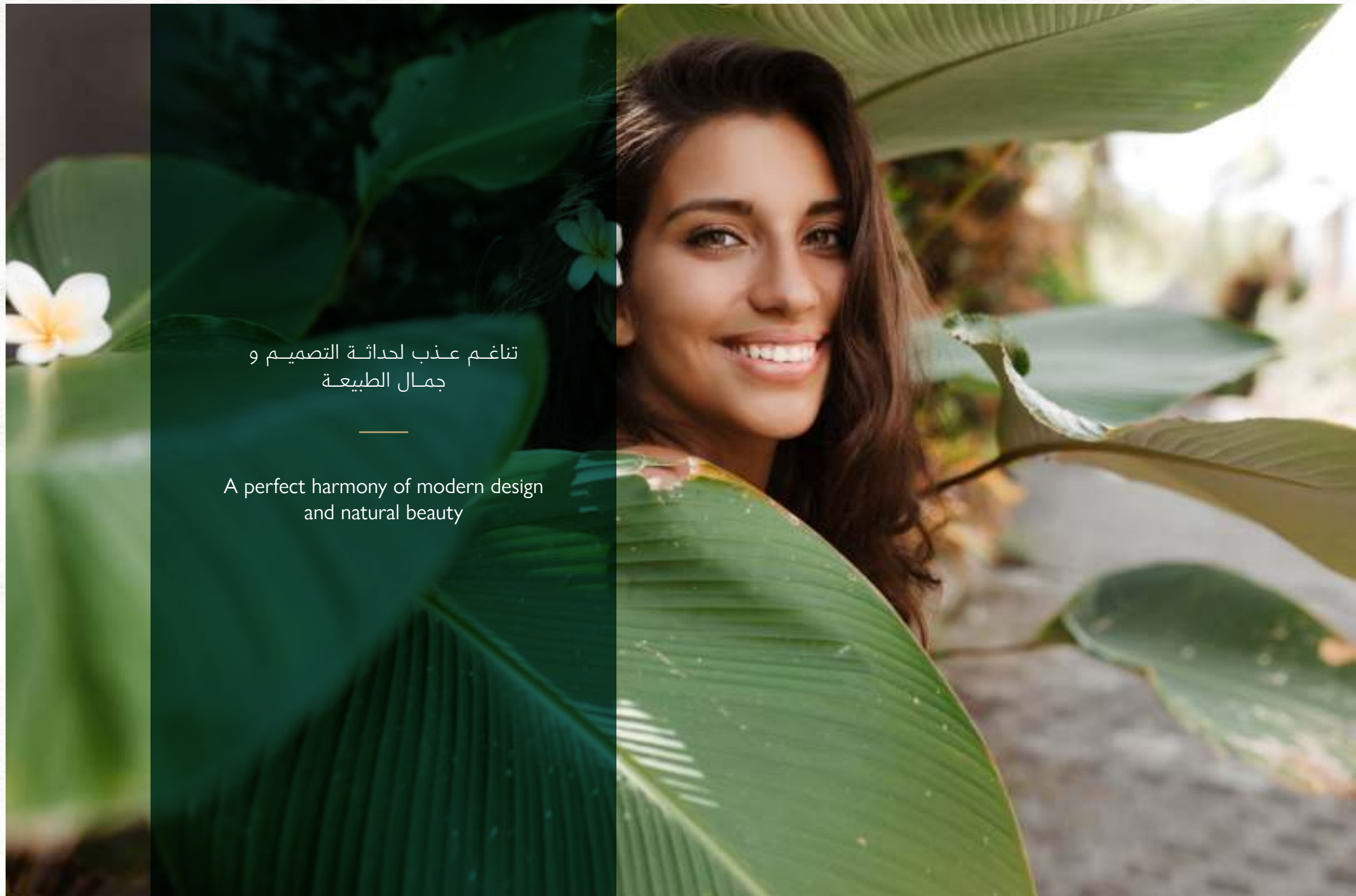
يوفر المبنى أسلوب حياة معاصر لأولئك الذين يسعون إلى الخصوصية والعملية وتجربة معيشية تشبه المنتجعات وسط الحياة الصاخبة في دبي، وكل ذلك مع تشطيبات عالية الجودة و واجهات حديثة و وسائل راحة عالمية المستوى تجلب كل حياة المدينة إلى بين يديك.

DESIGN PHILOSOPHY

Masterful Architecture meets the serenity of lush greens and nature's work of art, in a fusion that inspire passion and artistry to create a masterpiece of modernity and elegance. Verdana Residence is skilfully designed to meet the needs of residents seeking both vibrancy and tranquillity, in a home of both elegance and functionality. With an opulent colour palette of earth colours, and a warm touch of wood dominating the elevations, the building perfectly blends with the surrounding views.

فلسفة التصميم

تلتقي براعة الهندسة المعمارية بهدوء الخضرة المورقة وأعمال الطبيعة الفنية، في اندماج يلهم العاطفة والفن لخلق تحفة فنية من الحدانة والرقى. تم تصميم فيردانا ريزيدنس بمهارة لتلبية احتياجات السكان الباحثين عن كل من الحيوية والهدوء، في منزل يتميز بالأناقة والعملية. و مع لوحة الألوان الترابية الراقية، ولمسة الخشب الدافئة التي تهيمن على الواجهات، يمتزج المبنى في تناغم مع المناظر الطبيعية المحيطة.





ارتق بأسلوب حياتك إلى
مستوى جديد من الراحة
و الرفاهية

Elevate your lifestyle to a
whole new level of luxury
and convenience



إطلالات خلابة على
مجتمع فيردانا المميز

Impeccable Views of the
vibrant Verdana community





تصميمات إيطالية حديثة تضي
لمسة من الفخامة و الرقي

Modern Italian designs that evoke
a sense of luxury and refinement





اكتشف منزلاً بجمال من الداخل كما هو من الخارج، و اختبر
الراحة في أبهى صورها

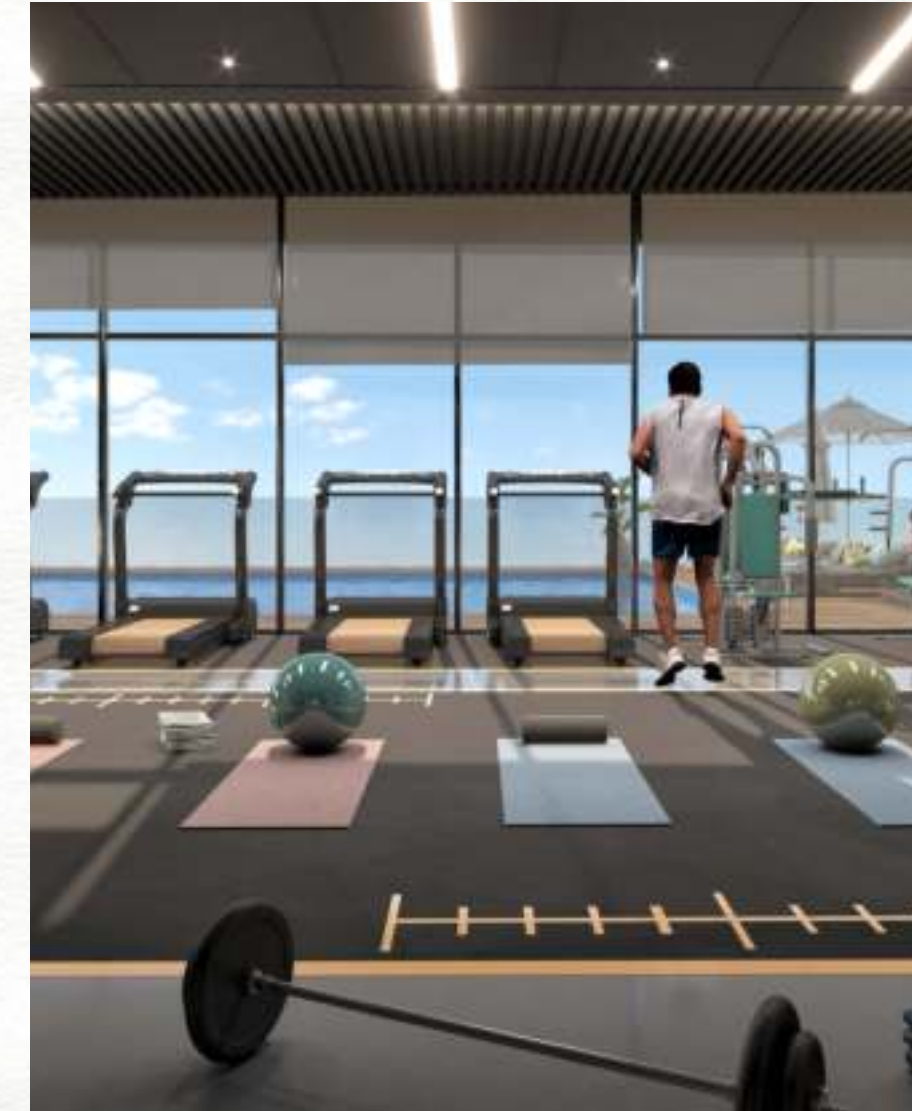
Discover a home that is as beautiful on the inside as it is on
the outside, and experience comfort at its finest



وسائل راحة بمستوى عالمي WORLD-CLASS AMENITIES



Large Swimming Pool	حمام سباحة كبير
Kids' Swimming Pools	حمامات سباحة للأطفال
Gymnasium	صالة ألعاب الرياضية
Kids' Play Area	منطقة لعب للأطفال
Shaded Seating Areas	مناطق جلوس مظلة
2 Large Elevators	2 مصاعد كبيرة
BBQ Areas	مناطق للشواء
Landscaped Areas	مساحات خضراء
Private Parking Areas	مواقف سيارات خاصة





مميزات الوحدة UNIT FEATURES

- | | |
|--|---|
| - شرفات / تراسات حسب مخطط الوحدة | - Private Balconies / Terraces as per unit plan |
| - خزائن مطبخ وكونترتوب | - Kitchen cabinets and countertops |
| - حمامات مكسوة بالكامل وأجنحة ومراحيض للضيوف حيثما كان ذلك متاحا | - Fully tiled bathrooms, in-suites and guest toilets wherever applicable |
| - نوافذ زجاجية مزدوجة | - Double glazed windows |
| - قمر صناعي رئيسي ووصلات ألياف ضوئية لإنترنت عالي السرعة | - Satellite master antenna and fibre optic connection for high-speed internet access. |
| - تكييف هواء مركزي | - Central air conditioning |
| - وحدات تخزين و مرايا | - Vanity units & Mirrors |
| - خزانات ملابس في غرف النوم | - Built-in wardrobes in bedrooms |
| - حمام خاص في بعض غرف النوم | - Some bedrooms with private bathroom |

مزيج الوحدات

UNIT MIX



109 شقة استوديو
Studio Apartments

130 شقة غرفة نوم واحدة
One Bedroom Apartments

TOTAL UNITS 239

إجمالي عدد الوحدات: 239

تفاصيل المشروع

PROJECT DETAILS

Type: Residential

Plot Area: 2,930.05 sq. m.

Total height: 55.10 m

Levels: Ground + 3 Podiums + 10 Floors

النوع: سكني

مساحة الأرض: 2,930.05 متر مربع

إجمالي الارتفاع: 55.10 متر

عدد الطوابق: أرضي + 3 بوديوم + 10 طوابق سكنية

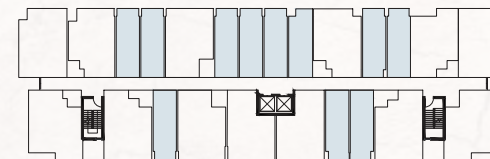
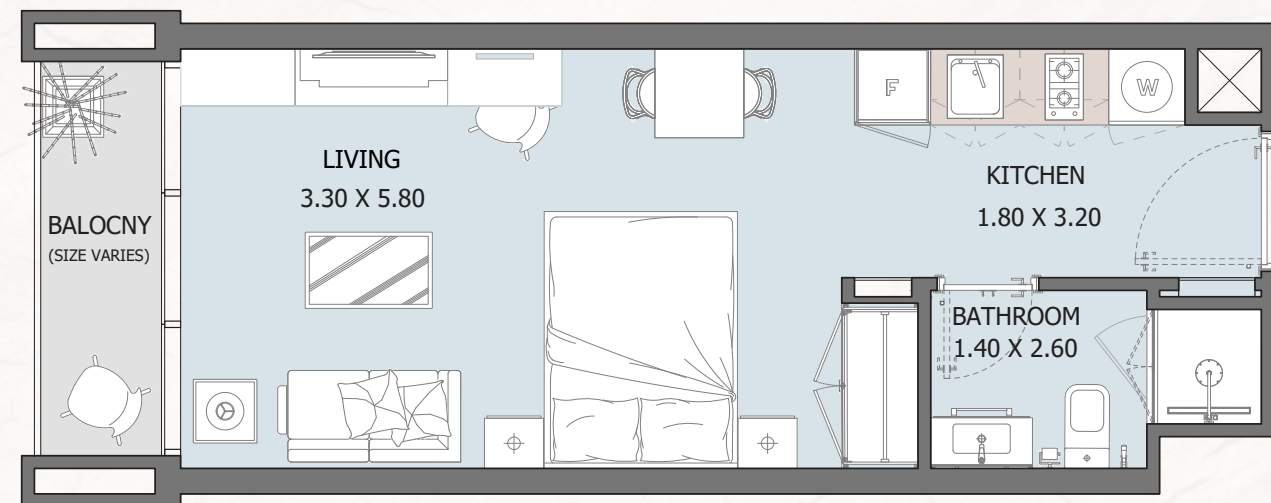


UNIT TYPES & FLOOR PLANS



STD TYPE - A

FROM GROUND FLOOR TO 10TH FLOOR

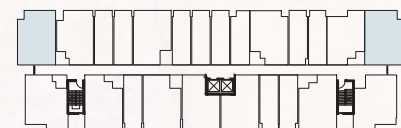
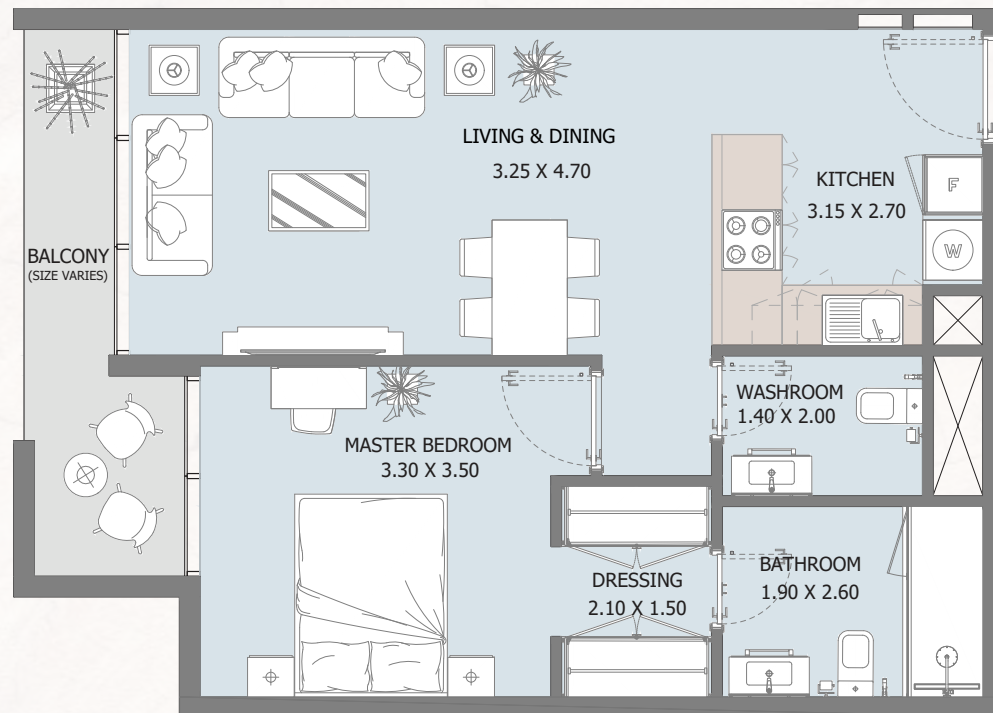


Internal Area	317.75 sq.ft
Outdoor Area	26.26 to 115.1 sq.ft
Total Area	344.1 to 432.8 sq.ft

All drawings and dimensions are approximate. Drawings are not to scale and are subject to change without notice. The developer reserves the right to make revisions. The units are measured at typical floors in the building and columns may vary in size depending on the floor level. The furnishing and accessories shown are for representation only. The availability, length and width of the balcony varies depending on which floor and which orientation the unit is located within the building. There will be slight differences in the internal areas between the same unit types depending on the shaft sizes that go through the units.

1B TYPE - A

FROM 1ST FLOOR TO 9TH FLOOR

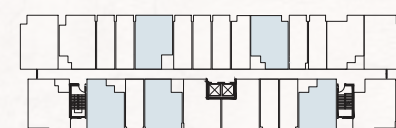


Internal Area	600 sq.ft
Outdoor Area	75.24 to 252.3 sq.ft
Total Area	675 to 852.1 sq.ft

All drawings and dimensions are approximate. Drawings are not to scale and are subject to change without notice. The developer reserves the right to make revisions. The units are measured at typical floors in the building and columns may vary in size depending on the floor level. The furnishing and accessories shown are for representation only. The availability, length and width of the balcony varies depending on which floor and which orientation the unit is located within the building. There will be slight differences in the internal areas between the same unit types depending on the shaft sizes that go through the units.

1B TYPE - B

FROM 1ST FLOOR TO 10TH FLOOR

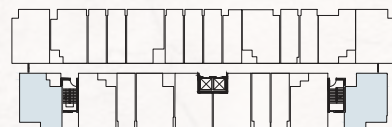
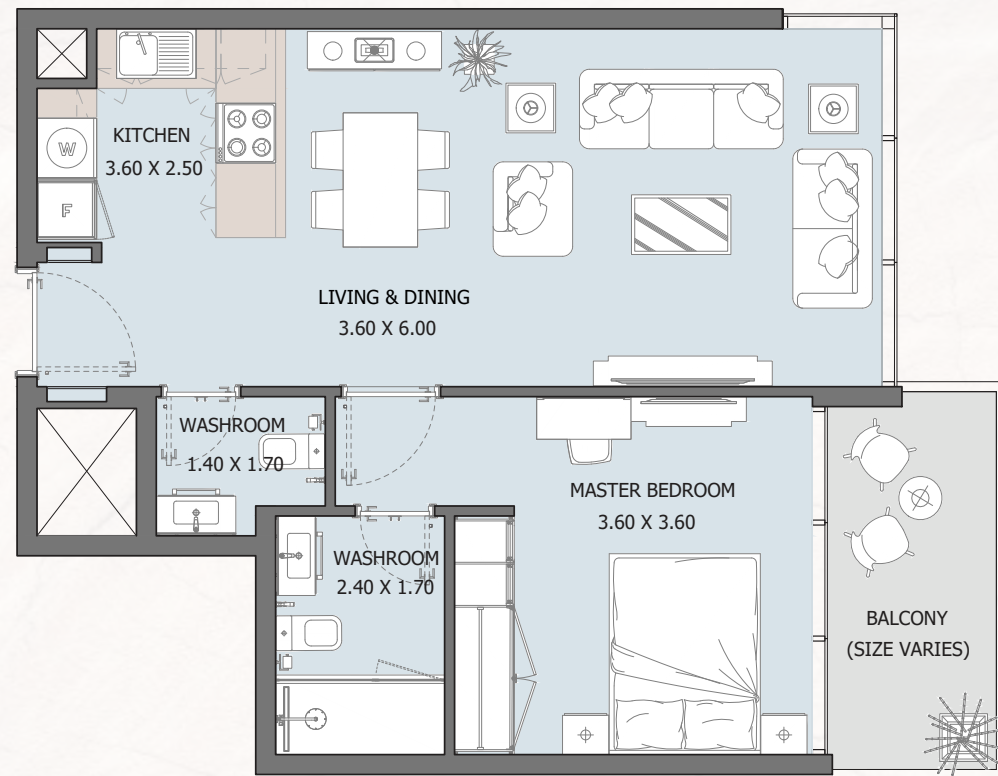


Internal Area	550.68 sq.ft
Outdoor Area	90.63 to 342.72 sq.ft
Total Area	641.31 to 893.40 sq.ft

All drawings and dimensions are approximate. Drawings are not to scale and are subject to change without notice. The developer reserves the right to make revisions. The units are measured at typical floors in the building and columns may vary in size depending on the floor level. The furnishing and accessories shown are for representation only. The availability, length and width of the balcony varies depending on which floor and which orientation the unit is located within the building. There will be slight differences in the internal areas between the same unit types depending on the shaft sizes that go through the units.

1B TYPE - C

FROM 1ST FLOOR TO 9TH FLOOR

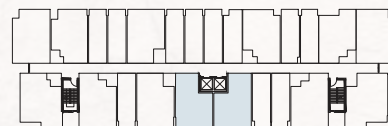
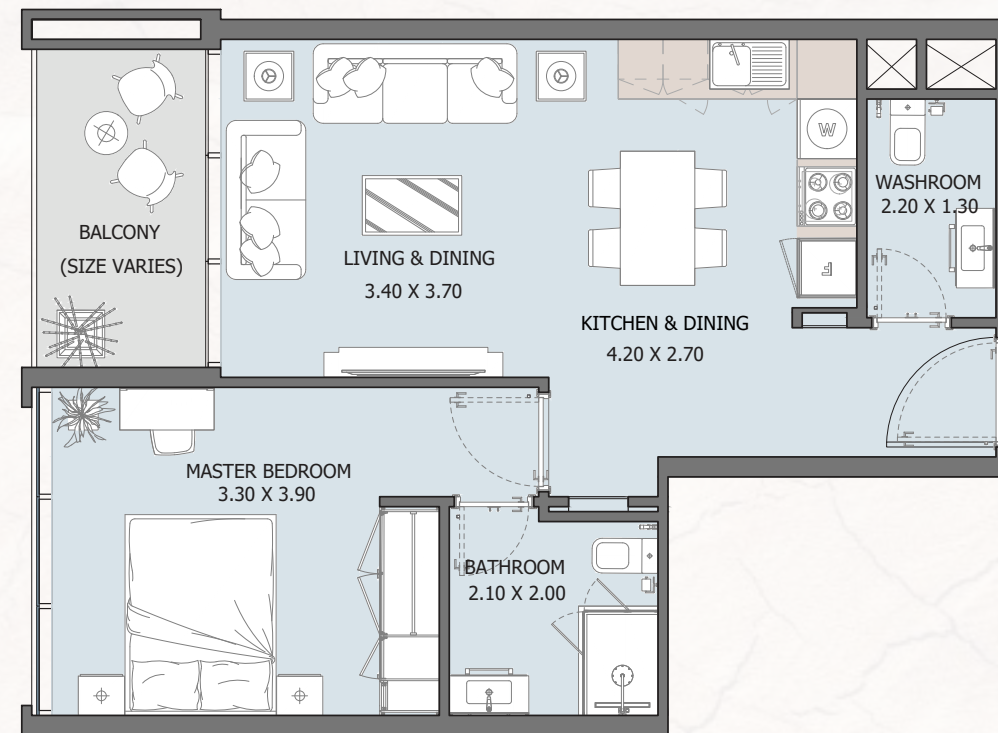


Internal Area	590.72 sq.ft
Outdoor Area	75.46 to 362.74 sq.ft
Total Area	666.17 to 953.47 sq.ft

All drawings and dimensions are approximate. Drawings are not to scale and are subject to change without notice. The developer reserves the right to make revisions. The units are measured at typical floors in the building and columns may vary in size depending on the floor level. The furnishing and accessories shown are for representation only. The availability, length and width of the balcony varies depending on which floor and which orientation the unit is located within the building. There will be slight differences in the internal areas between the same unit types depending on the shaft sizes that go through the units.

1B TYPE - D

FROM 2ND FLOOR TO 10TH FLOOR

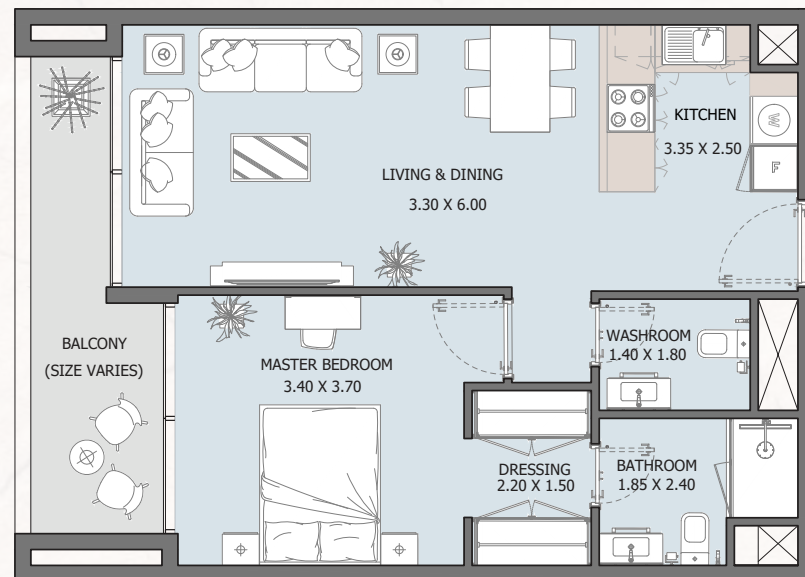


Internal Area	559.18 sq.ft
Outdoor Area	68.02 to 71.14 sq.ft
Total Area	626.78 to 630.33 sq.ft

All drawings and dimensions are approximate. Drawings are not to scale and are subject to change without notice. The developer reserves the right to make revisions. The units are measured at typical floors in the building and columns may vary in size depending on the floor level. The furnishing and accessories shown are for representation only. The availability, length and width of the balcony varies depending on which floor and which orientation the unit is located within the building. There will be slight differences in the internal areas between the same unit types depending on the shaft sizes that go through the units.

1B TYPE - E

FROM GROUND FLOOR TO 2ND FLOOR

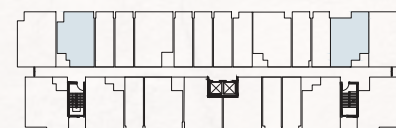
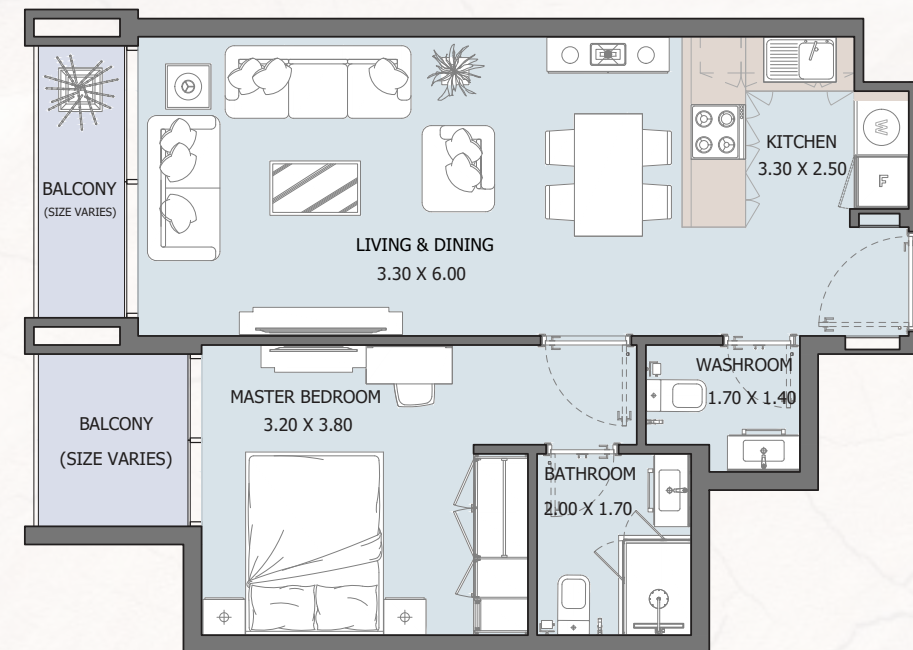


Internal Area	605.47 sq.ft
Outdoor Area	102.58 to 286 sq.ft
Total Area	709.34 to 892.65 sq.ft

All drawings and dimensions are approximate. Drawings are not to scale and are subject to change without notice. The developer reserves the right to make revisions. The units are measured at typical floors in the building and columns may vary in size depending on the floor level. The furnishing and accessories shown are for representation only. The availability, length and width of the balcony varies depending on which floor and which orientation the unit is located within the building. There will be slight differences in the internal areas between the same unit types depending on the shaft sizes that go through the units.

1B TYPE - F

FROM 1ST FLOOR TO 10TH FLOOR

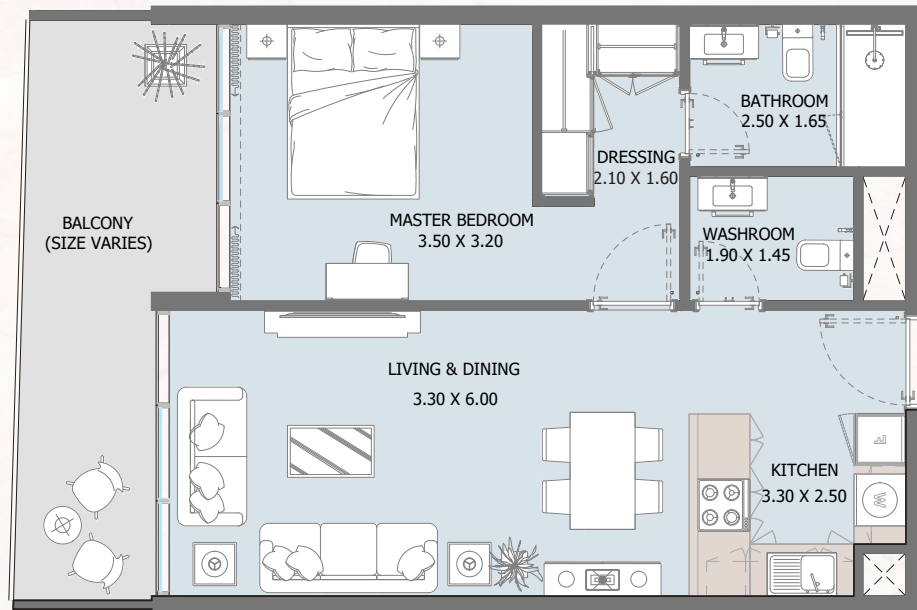


Internal Area	538.73 sq.ft
Outdoor Area	61.68 to 243.70 sq.ft
Total Area	600.41 to 782.43 sq.ft

All drawings and dimensions are approximate. Drawings are not to scale and are subject to change without notice. The developer reserves the right to make revisions. The units are measured at typical floors in the building and columns may vary in size depending on the floor level. The furnishing and accessories shown are for representation only. The availability, length and width of the balcony varies depending on which floor and which orientation the unit is located within the building. There will be slight differences in the internal areas between the same unit types depending on the shaft sizes that go through the units.

1B

TYPE - G
GROUND FLOOR

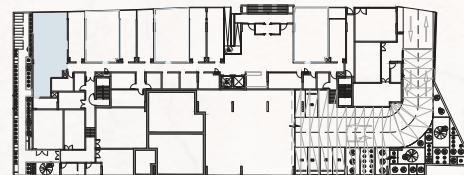
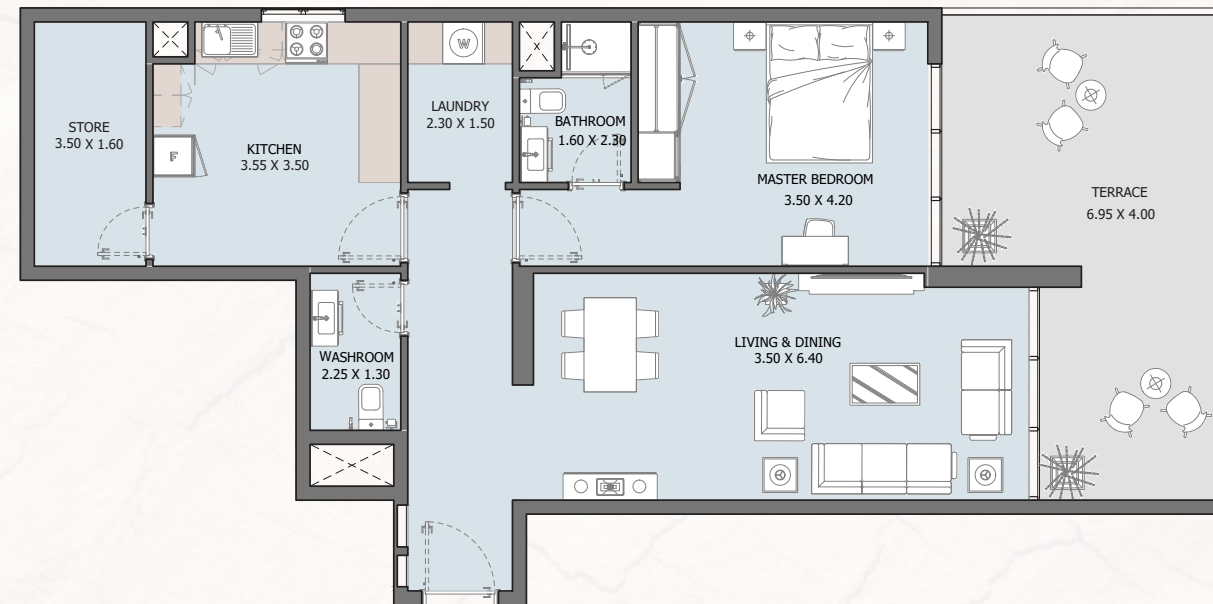


Internal Area	593.95 sq.ft
Outdoor Area	148.43 sq.ft
Total Area	742.38 sq.ft

All drawings and dimensions are approximate. Drawings are not to scale and are subject to change without notice. The developer reserves the right to make revisions. The units are measured at typical floors in the building and columns may vary in size depending on the floor level. The furnishing and accessories shown are for representation only. The availability, length and width of the balcony varies depending on which floor and which orientation the unit is located within the building. There will be slight differences in the internal areas between the same unit types depending on the shaft sizes that go through the units.

1B

TYPE - H
GROUND FLOOR



Internal Area	900.40 sq.ft
Outdoor Area	265.49 sq.ft
Total Area	1165.84 sq.ft

All drawings and dimensions are approximate. Drawings are not to scale and are subject to change without notice. The developer reserves the right to make revisions. The units are measured at typical floors in the building and columns may vary in size depending on the floor level. The furnishing and accessories shown are for representation only. The availability, length and width of the balcony varies depending on which floor and which orientation the unit is located within the building. There will be slight differences in the internal areas between the same unit types depending on the shaft sizes that go through the units.