



AVION

RESIDENCE

DUBAI SOUTH

 SKY VIEW
DEVELOPMENT



Redefining Luxury Living

Welcome to Avion Residence, a luxurious new project by Sky View Development in the heart of Dubai. This exceptional development combines modern architecture with sustainable design, offering the perfect blend of style, innovation, and comfort.

With smart home technology, stunning views, and world-class amenities, Avion Residence redefines luxury living. Located in one of Dubai's most desirable areas, residents enjoy unmatched convenience, easy access to culture, dining, and entertainment, all while experiencing ultimate tranquility.

Discover your perfect home at Avion Residence, where elegance and innovation come together for an extraordinary living experience.

Elevate your lifestyle. Live the Avion experience.

AVION
RESIDENCE



AVION
RESIDENCE



AVION
RESIDENCE

Experience the Comfort

Step into a world where luxury and comfort seamlessly blend to create an unparalleled living experience. Our meticulously designed luxury apartments are more than just a place to live—they are a sanctuary where every detail is crafted to elevate your lifestyle.

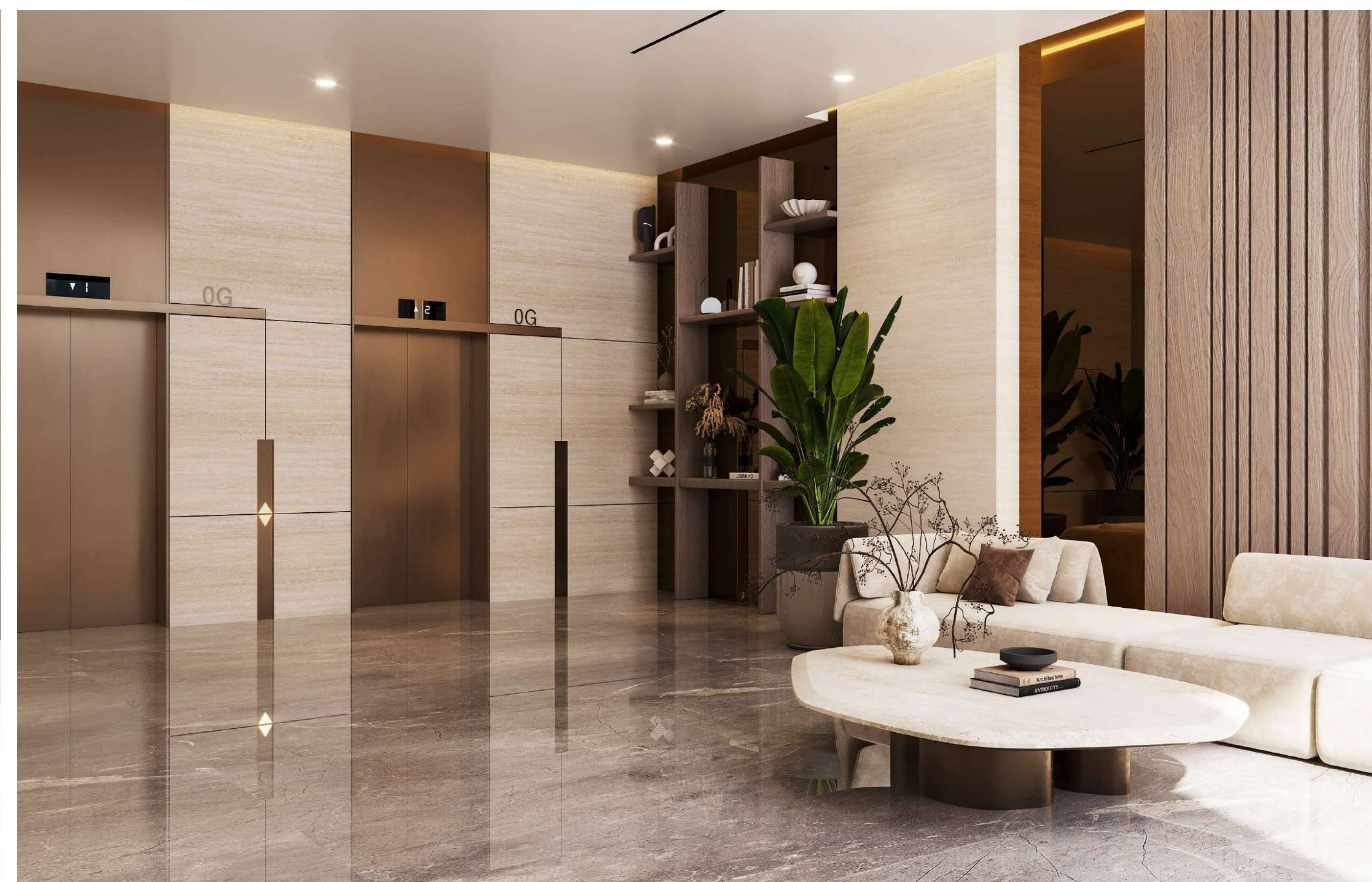
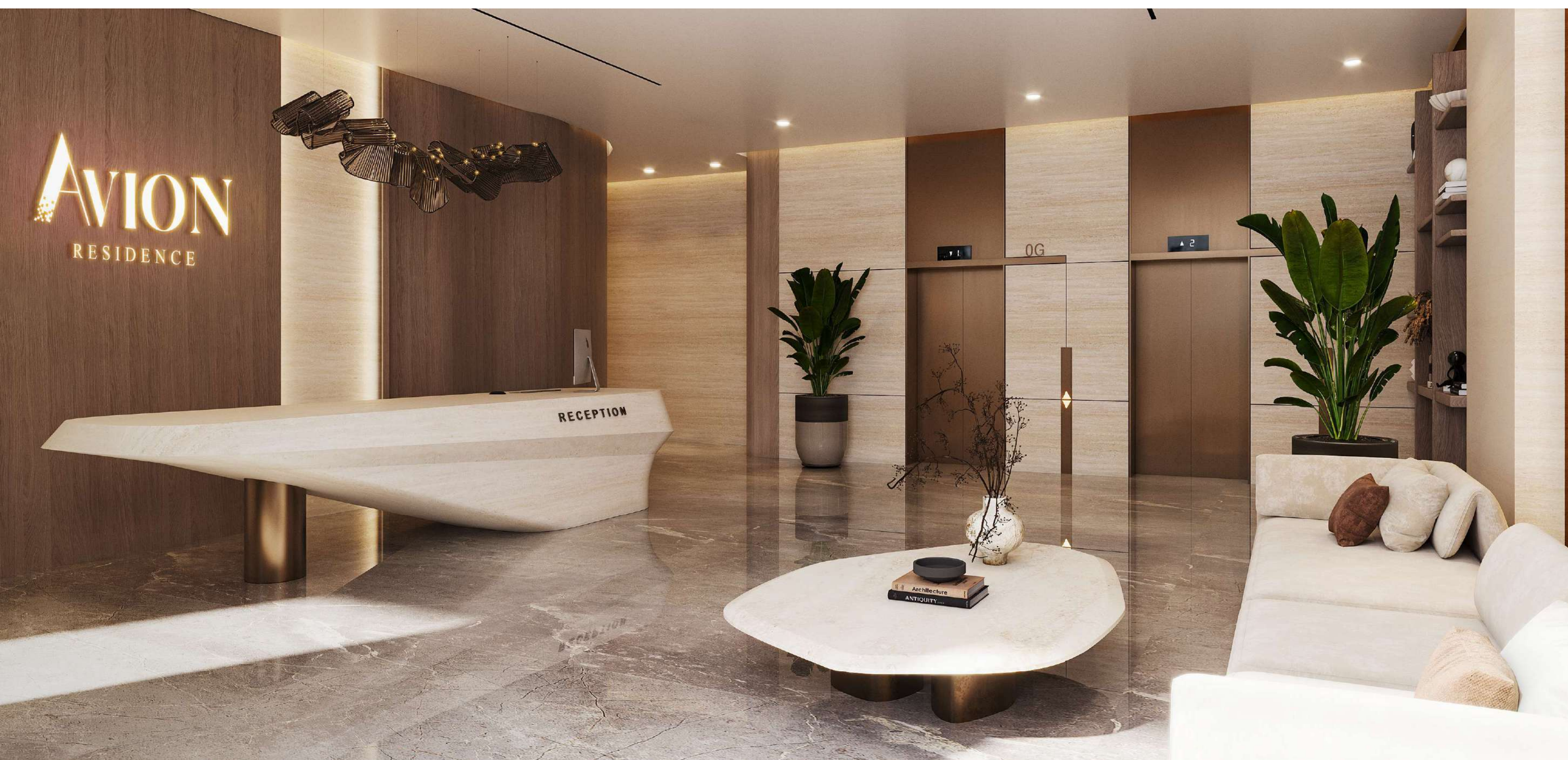
From spacious, elegantly designed interiors to world-class amenities, every element is tailored for your ultimate comfort. Whether you're unwinding after a long day or entertaining in style, you'll find every moment at home a true indulgence.

Discover a place where comfort meets sophistication. Experience the height of luxury living today.

AVION
RESIDENCE



RECEPTION



Fitness Center



AVION
RESIDENCE

The Perfect Family Heaven

At Avion Residence, we believe that home is where families grow and memories are made. Designed with the modern family in mind, this luxurious development features spacious residences that seamlessly blend style, comfort, and functionality. With state-of-the-art smart home technology, expansive living areas, and breathtaking views, Avion Residence provides an ideal space for families to thrive in a truly elevated environment.

Located in the heart of Dubai, Avion Residence offers unmatched convenience with easy access to top schools, parks, and a range of family-friendly amenities. Whether you're enjoying the serene surroundings or exploring the city's vibrant culture, Avion Residence ensures that your family enjoys both peace of mind and the excitement of urban living. Discover the ultimate family sanctuary, where every moment is cherished and every need is met.



AVION
RESIDENCE





Prime Location

15 MINUTES'

Drive to Al Maktoum International Airport



25 MINUTES'

Drive to District 2020: the future vision of Expo 2020 Dubai



30 MINUTES'

Drive to Dubai Marina



45 MINUTES'

Drive to Downtown Dubai



60 MINUTES'

Drive to Abu Dhabi



AVION
RESIDENCE



AVION
RESIDENCE



AVION
RESIDENCE

AVION
RESIDENCE

A New Benchmark in Amenities

AVION
RESIDENCE



Swimming
Pool



Rooftop
Beach



Floating
Deck



Evening
Deck



Equipped
Gym



Outdoor
Cinema



Kids Play
Area



Spacious
Room



Designer
Lobby



Covered Car Parking
for Each Apartments



24-Hour
Security



AVION
RESIDENCE











AVION
RESIDENCE





Project Details

Property Name:	Avion Residence
Developer:	Sky View Developments
Location:	Dubai South
Features:	World-class Amenities, Spacious Living
Building Specification:	G + P + 10
Unit Types:	1 & 2 Bedroom Apartments
Total Residential Floors:	6
Total Number of Units:	66 Premium Apartments
Payment Plan:	
Handover:	Q4, 2027
Starting Price:	AED 850K



Project Details

Property Name:	Avion Residence
Developer:	Sky View Developments
Location:	Dubai South
Features:	World-class Amenities, Spacious Living
Building Specification:	G + P + 10
Unit Types:	1 & 2 Bedroom Apartments
Total Residential Floors:	6
Total Number of Units:	66 Premium Apartments
Payment Plan:	
Handover:	Q4, 2027
Starting Price:	AED 850K



AVION
RESIDENCE

AVION
RESIDENCE



AVION
RESIDENCE



AVION
RESIDENCE



AVION
RESIDENCE



AVION
RESIDENCE

Floor Plans

DRAFT

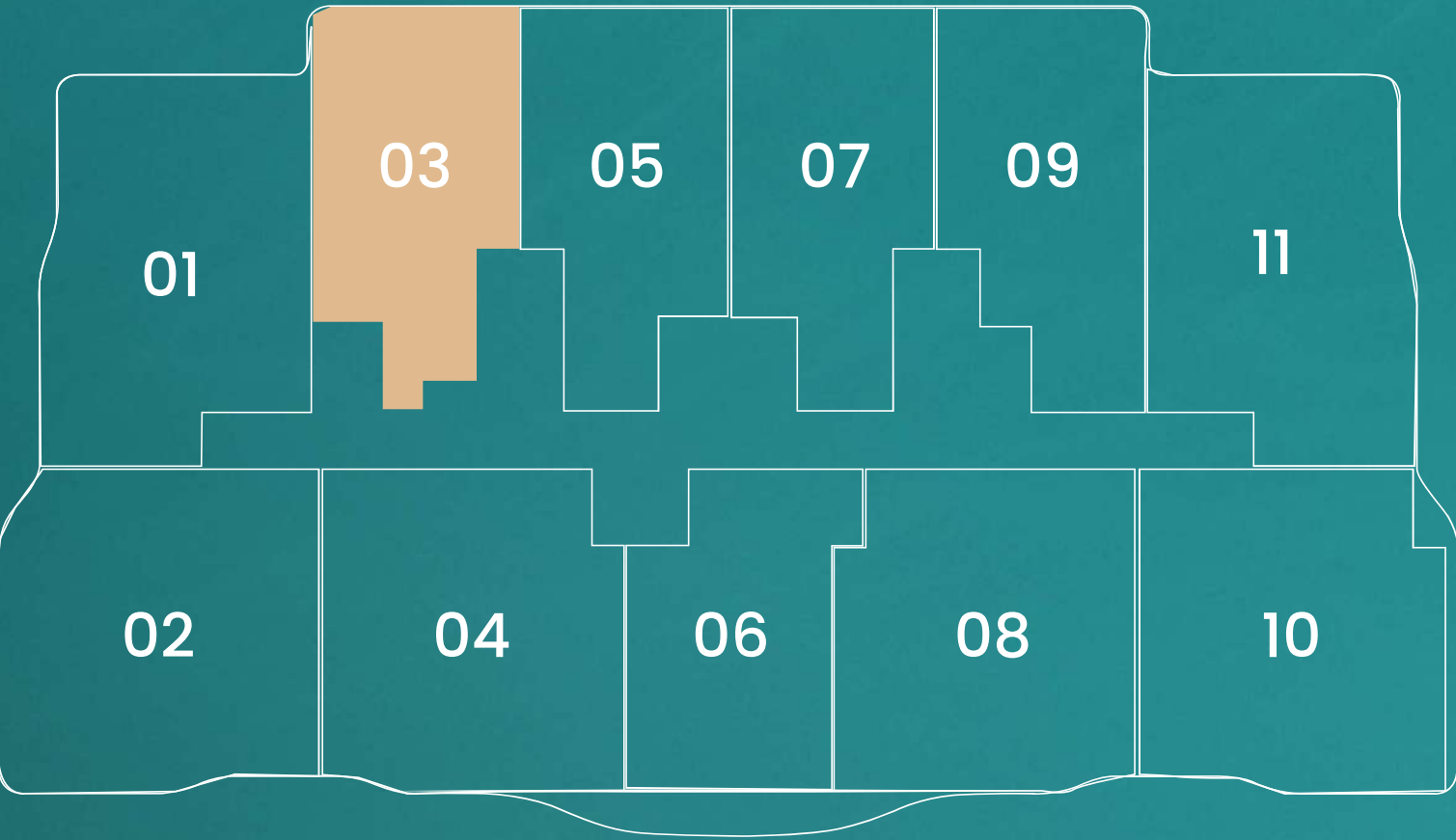
APARTMENT PLANS

1 BHK + STUDY – TYPE A



Net Area	753.14 sq.ft.
Balcony Area	140.56 sq ft.
Total	893.70 sq.ft.

FLOOR PLATE (1ST – 6TH FLOOR)



DISCLAIMERS

1. All dimensions are in millimeter, and measured from finish to finish excluding construction tolerances. 2. All materials, dimensions and drawings are approximate only. 3. Information is subject to change without notice, at developer's absolute discretion. 4. Actual area may vary from the stated area. 5. Drawings are not to scale. 6. All images used are for illustrative purposes only and do not represent the actual size, features, specifications, fittings and furnishing. 7. The developer reserves the right to make revisions or alterations, at its absolute discretion, without any liability whatsoever.

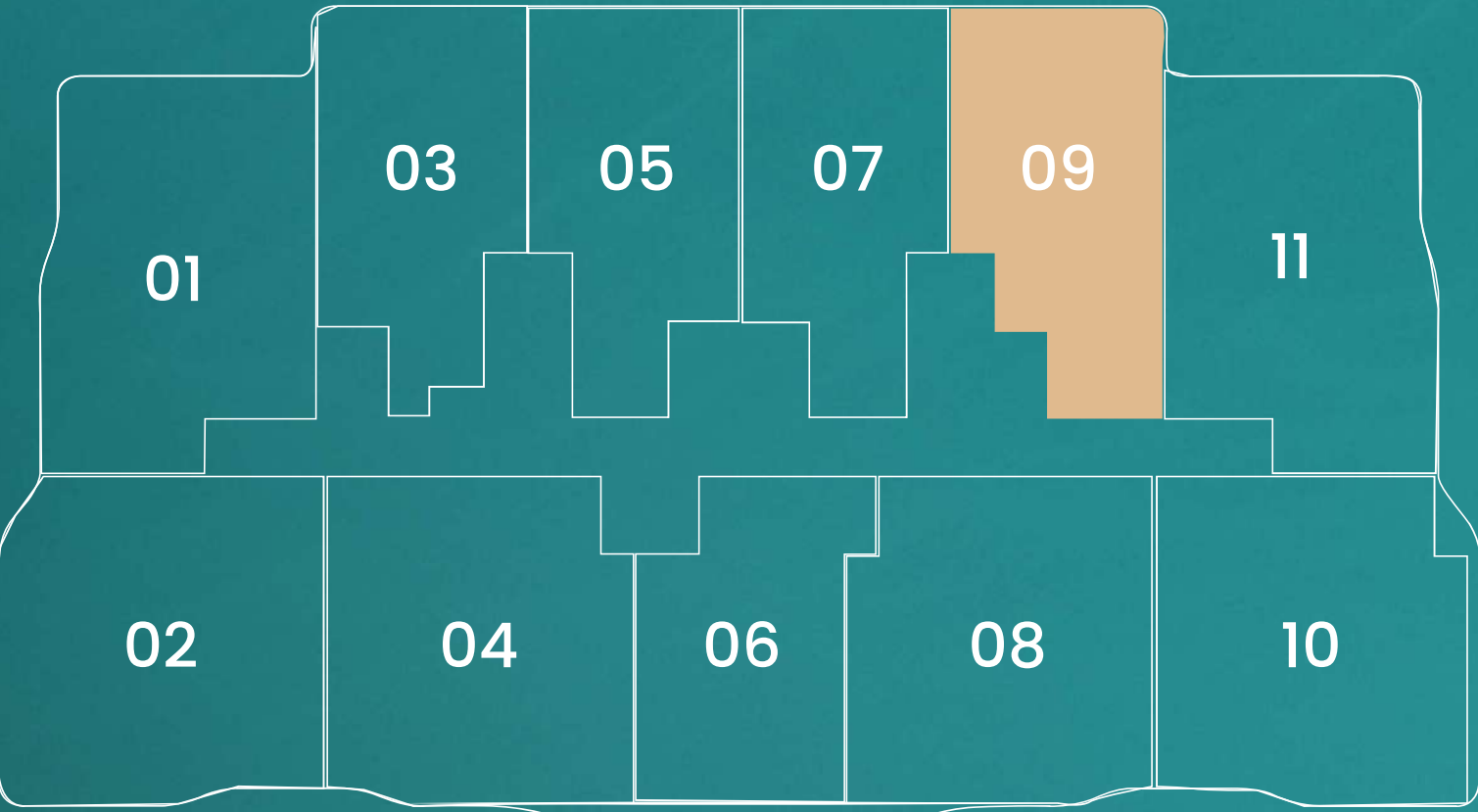
APARTMENT PLANS

1 BHK + STUDY – TYPE A1



Net Area	761.19 sq.ft.
Balcony Area	140.56 sq.ft.
<hr/>	
Total	901.75 sq.ft.

FLOOR PLATE (1ST – 6TH FLOOR)



DISCLAIMERS

1. All dimensions are in millimeter, and measured from finish to finish excluding construction tolerances. 2. All materials, dimensions and drawings are approximate only. 3. Information is subject to change without notice, at developer's absolute discretion. 4. Actual area may vary from the stated area. 5. Drawings are not to scale. 6. All images used are for illustrative purposes only and do not represent the actual size, features, specifications, fittings and furnishing. 7. The developer reserves the right to make revisions or alterations, at its absolute discretion, without any liability whatsoever.

APARTMENT PLANS

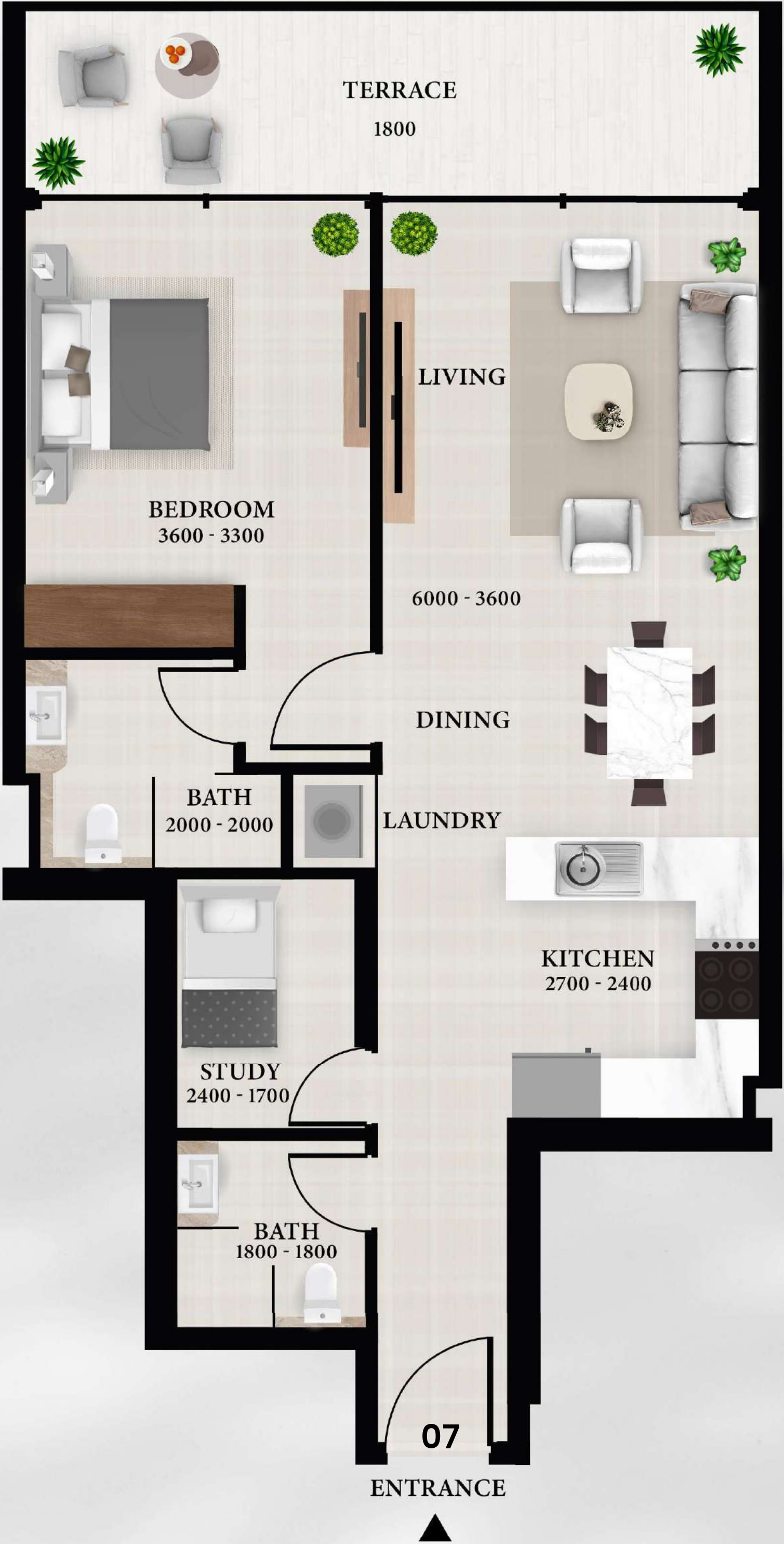
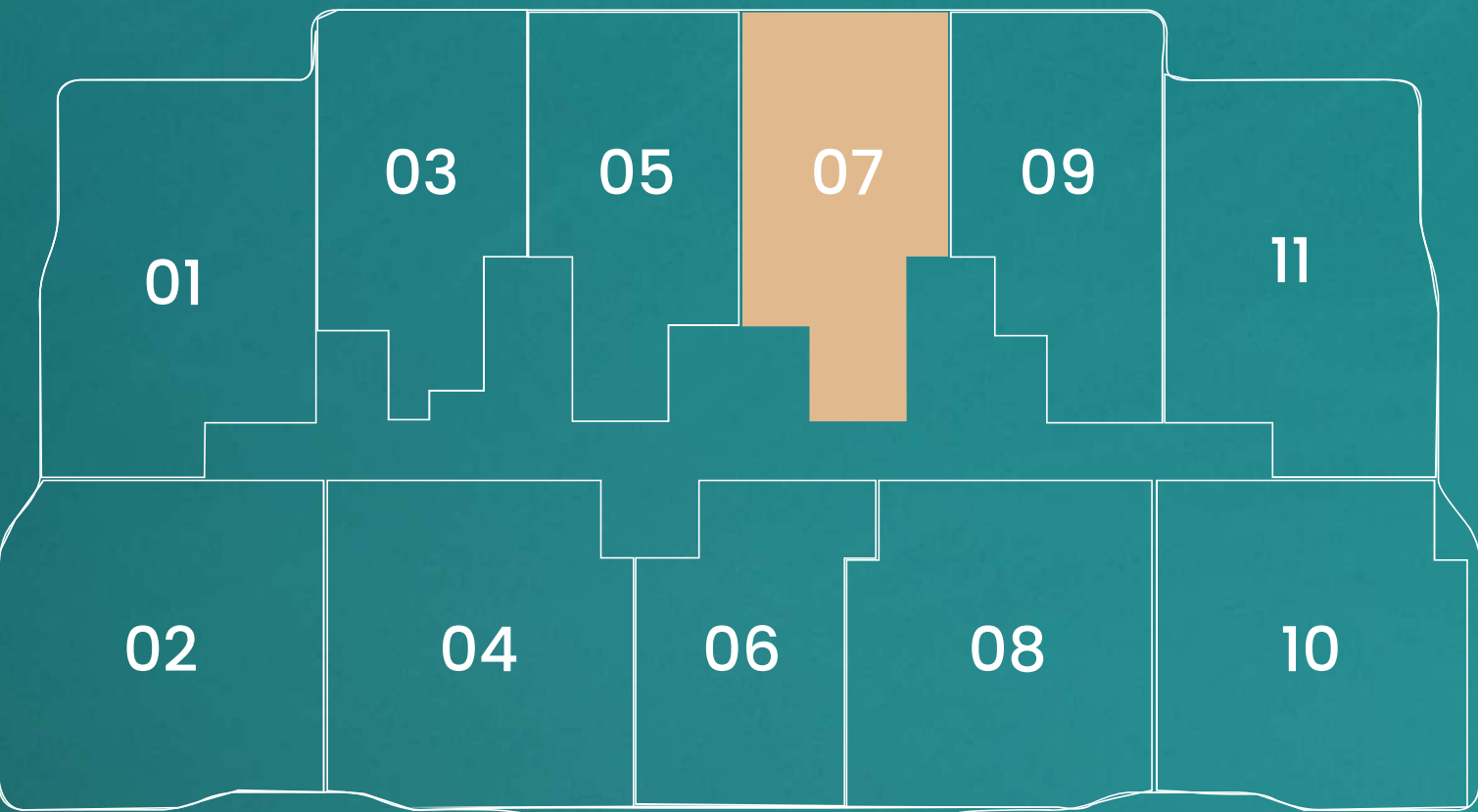
1 BHK + STUDY – TYPE B

Net Area752.92 sq.ft.

Balcony Area139.12 sq.ft.

Total892.04 sq.ft.

FLOOR PLATE (1ST – 6TH FLOOR)



DISCLAIMERS

1. All dimensions are in millimeter, and measured from finish to finish excluding construction tolerances. 2. All materials, dimensions and drawings are approximate only. 3. Information is subject to change without notice, at developer's absolute discretion. 4. Actual area may vary from the stated area. 5. Drawings are not to scale. 6. All images used are for illustrative purposes only and do not represent the actual size, features, specifications, fittings and furnishing. 7. The developer reserves the right to make revisions or alterations, at its absolute discretion, without any liability whatsoever.

APARTMENT PLANS

1 BHK + STUDY – TYPE C

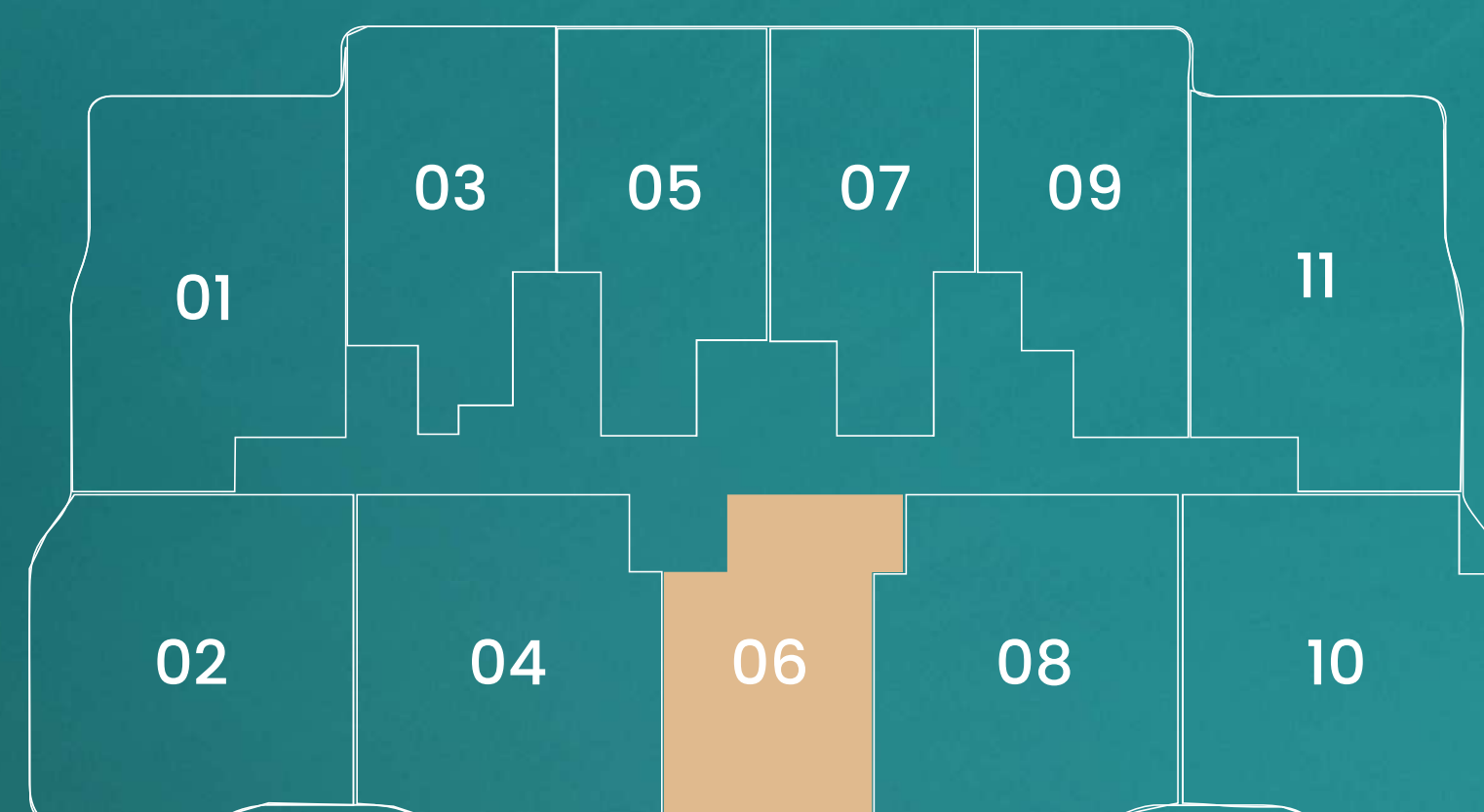


Net Area 690.63 sq.ft.

Balcony Area 139.19 sq.ft.

Total 829.82 sq.ft.

FLOOR PLATE (1ST – 6TH FLOOR)



DISCLAIMERS

1. All dimensions are in millimeter, and measured from finish to finish excluding construction tolerances. 2. All materials, dimensions and drawings are approximate only. 3. Information is subject to change without notice, at developer's absolute discretion. 4. Actual area may vary from the stated area. 5. Drawings are not to scale. 6. All images used are for illustrative purposes only and do not represent the actual size, features, specifications, fittings and furnishing. 7. The developer reserves the right to make revisions or alterations, at its absolute discretion, without any liability whatsoever.

APARTMENT PLANS

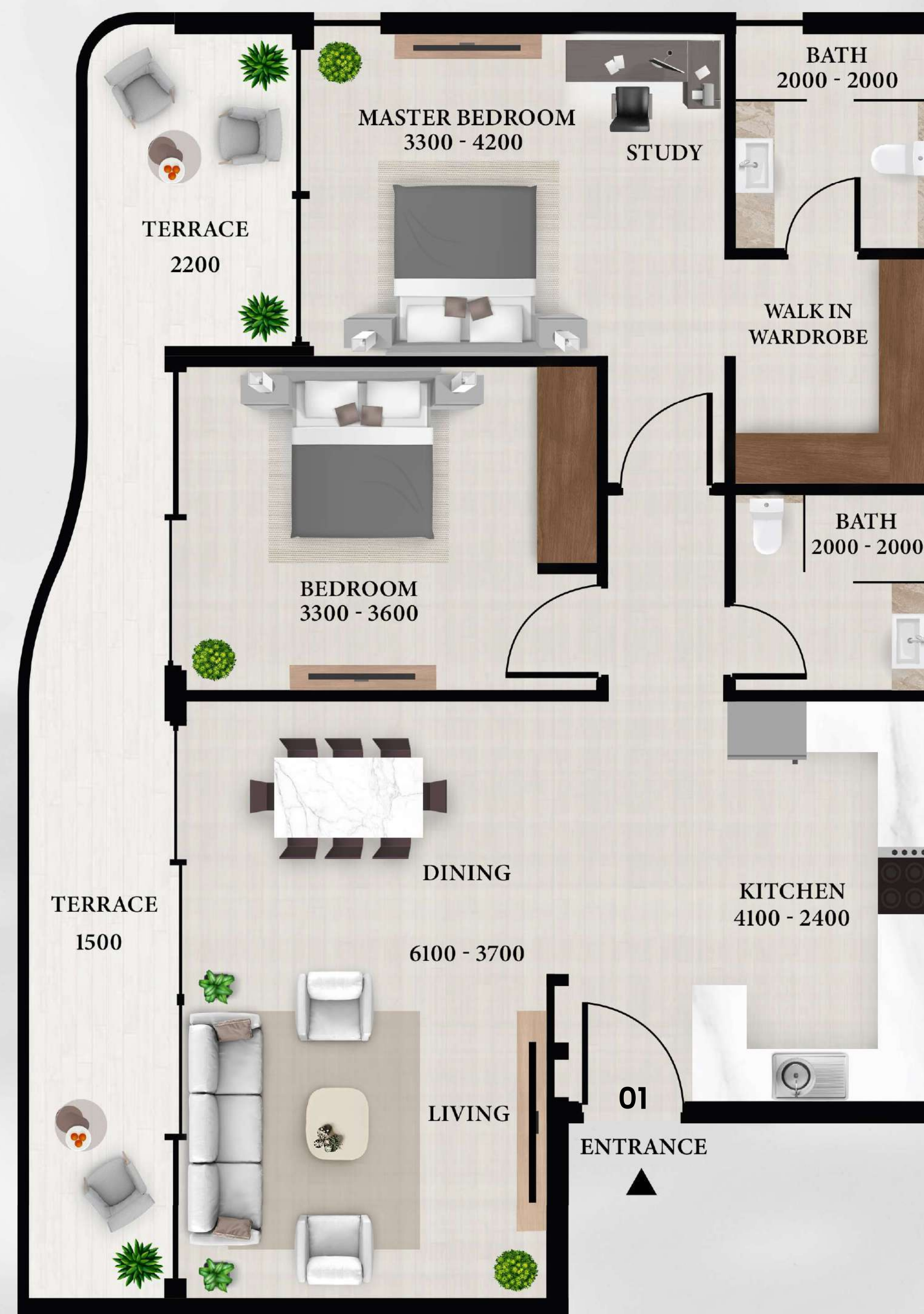
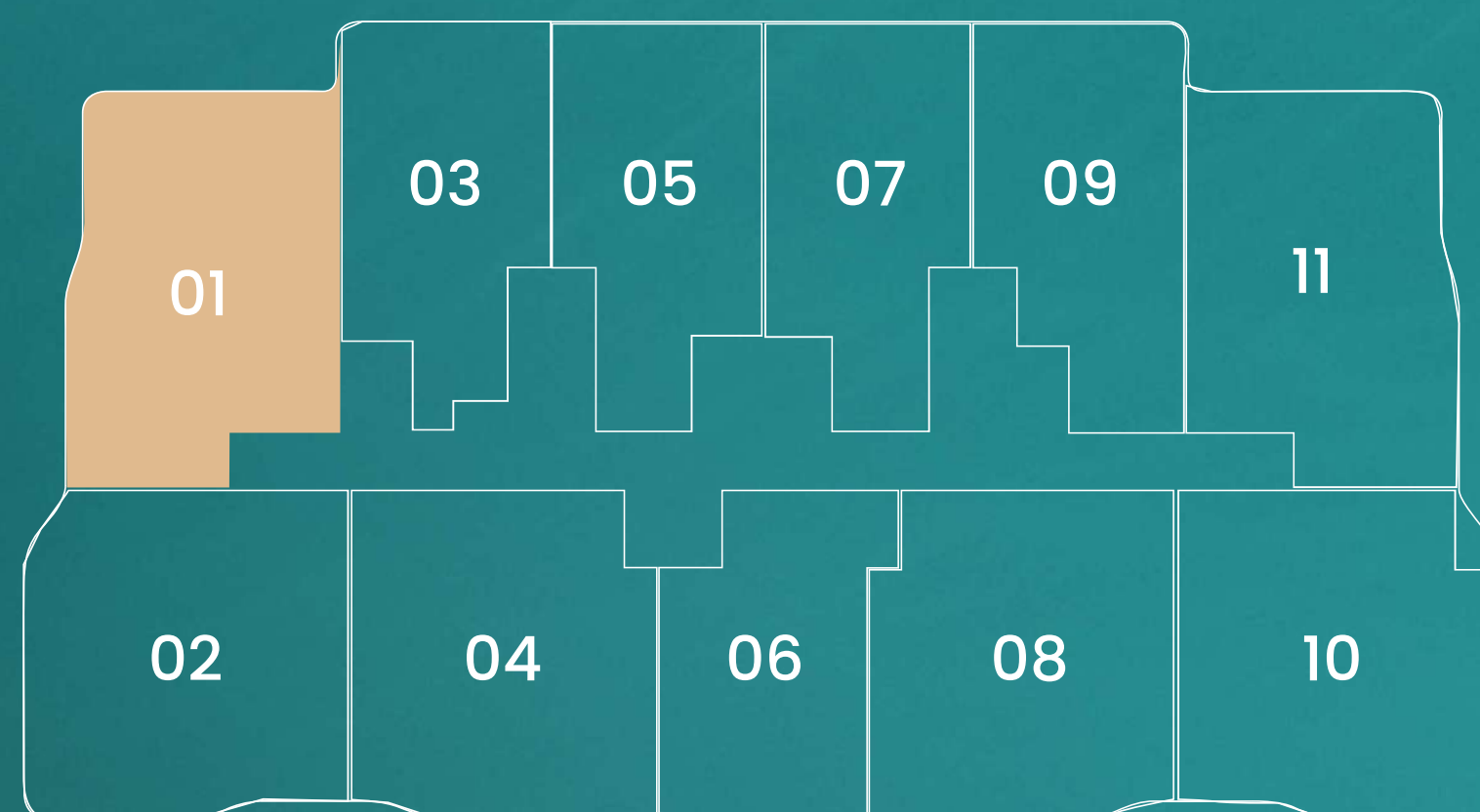
2 BHK – TYPE A

Net Area 986.60 sq.ft.

Balcony Area 223.57 sq.ft.

Total 1,210.17 sq.ft.

FLOOR PLATE (1ST – 6TH FLOOR)



DISCLAIMERS

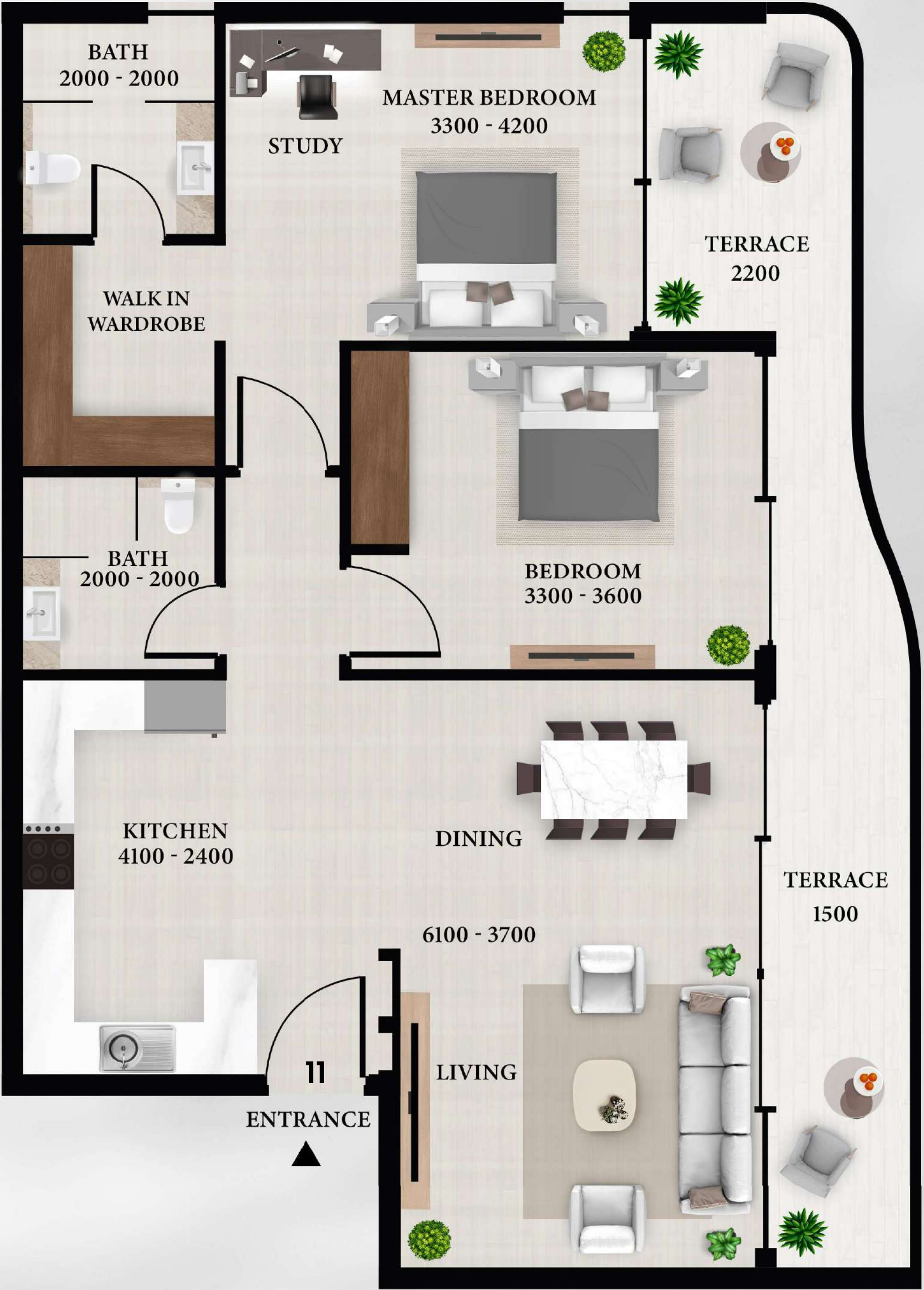
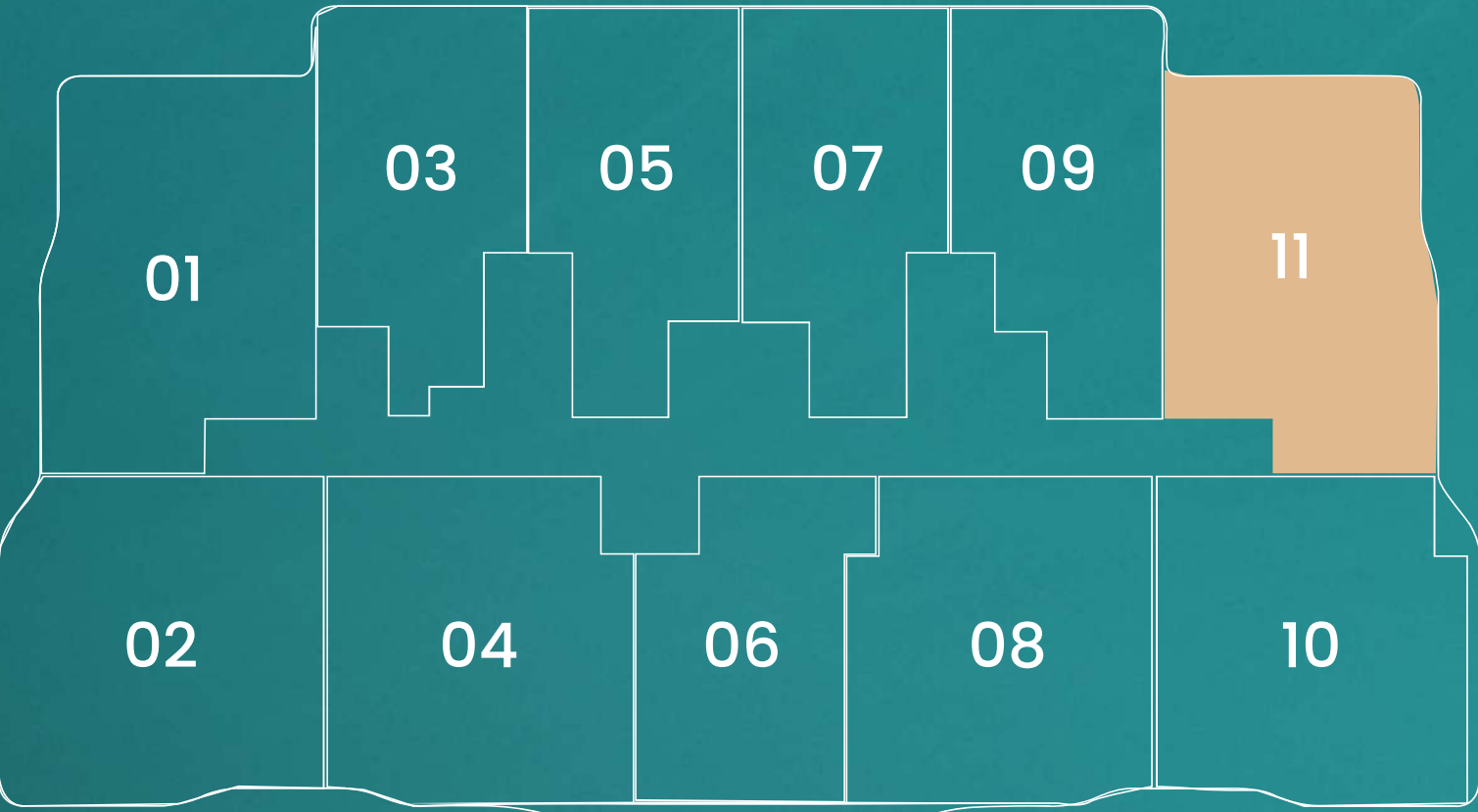
1. All dimensions are in millimeter, and measured from finish to finish excluding construction tolerances. 2. All materials, dimensions and drawings are approximate only. 3. Information is subject to change without notice, at developer's absolute discretion. 4. Actual area may vary from the stated area. 5. Drawings are not to scale. 6. All images used are for illustrative purposes only and do not represent the actual size, features, specifications, fittings and furnishing. 7. The developer reserves the right to make revisions or alterations, at its absolute discretion, without any liability whatsoever.

APARTMENT PLANS

2 BHK – TYPE A1

Net Area	987.92 sq.ft.
Balcony Area	223.62 sq.ft.
<hr/>	
Total	1,211.54 sq.ft.

FLOOR PLATE (1ST – 6TH FLOOR)



DISCLAIMERS

1. All dimensions are in millimeter, and measured from finish to finish excluding construction tolerances. 2. All materials, dimensions and drawings are approximate only. 3. Information is subject to change without notice, at developer's absolute discretion. 4. Actual area may vary from the stated area. 5. Drawings are not to scale. 6. All images used are for illustrative purposes only and do not represent the actual size, features, specifications, fittings and furnishing. 7. The developer reserves the right to make revisions or alterations, at its absolute discretion, without any liability whatsoever.

APARTMENT PLANS

2 BHK + STUDY – TYPE A

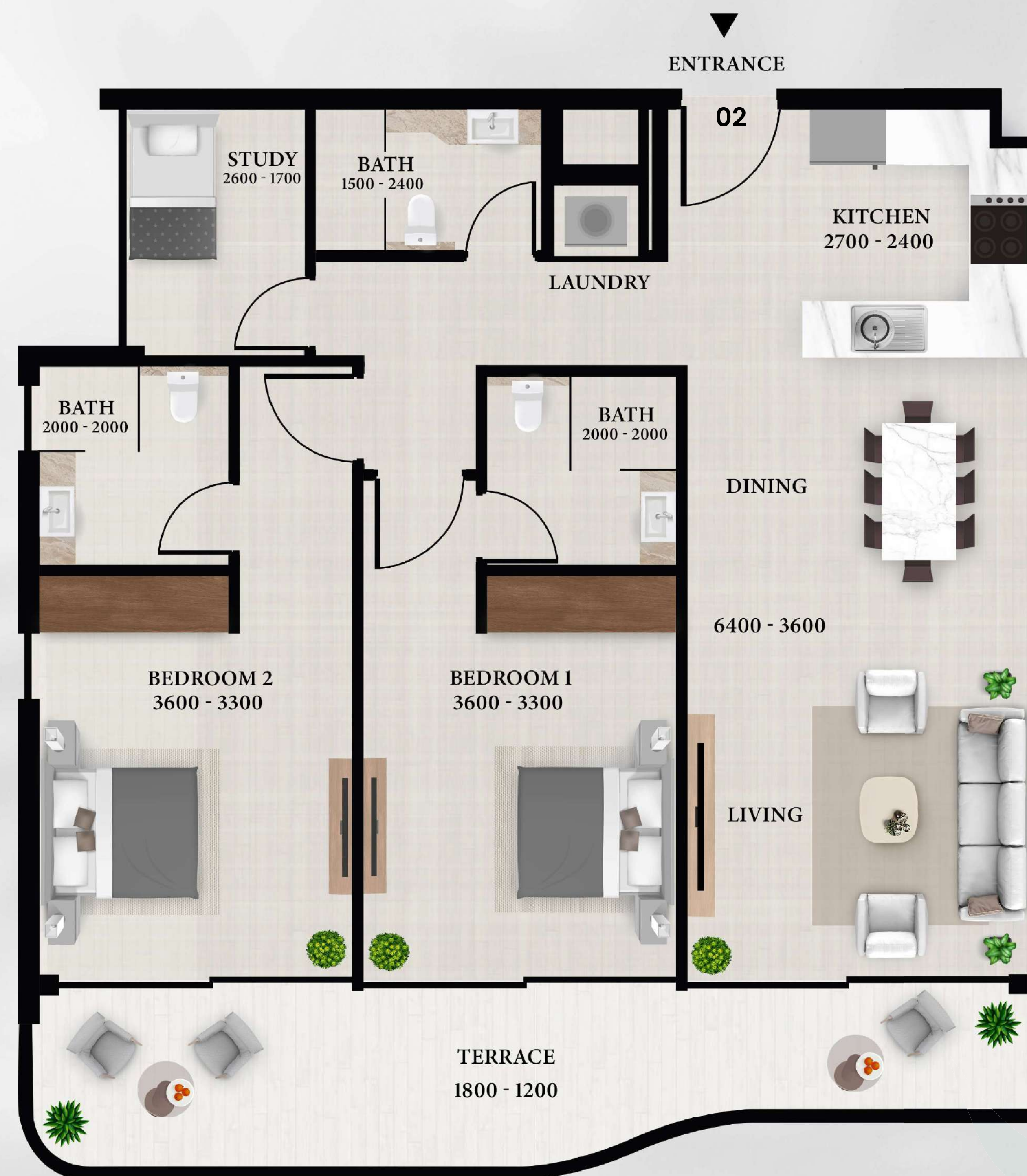
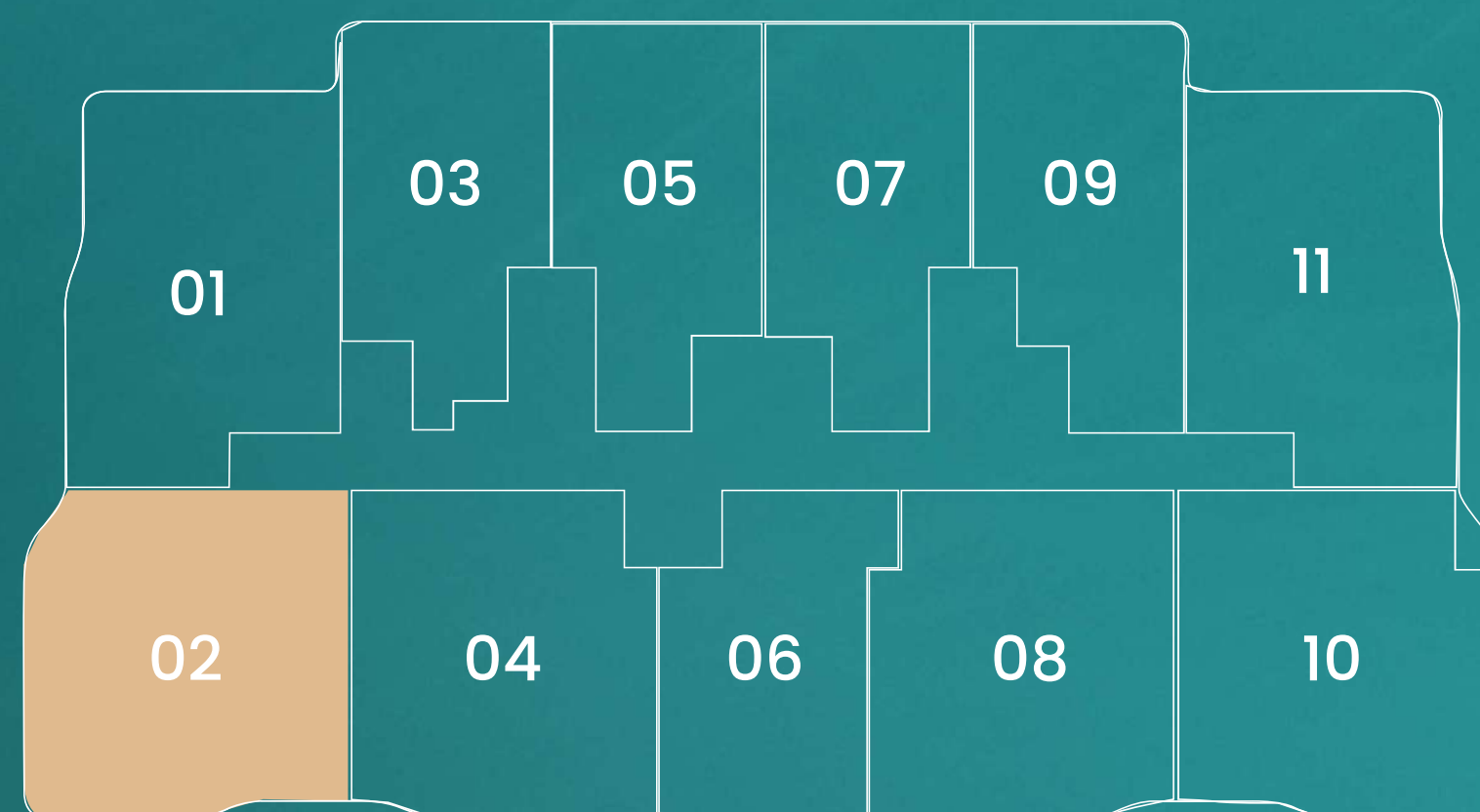


Net Area 1,041.87 sq.ft.

Balcony Area 178.91 sq.ft.

Total 1,220.78 sq.ft.

FLOOR PLATE (1ST – 6TH FLOOR)



DISCLAIMERS

1. All dimensions are in millimeter, and measured from finish to finish excluding construction tolerances. 2. All materials, dimensions and drawings are approximate only. 3. Information is subject to change without notice, at developer's absolute discretion. 4. Actual area may vary from the stated area. 5. Drawings are not to scale. 6. All images used are for illustrative purposes only and do not represent the actual size, features, specifications, fittings and furnishing. 7. The developer reserves the right to make revisions or alterations, at its absolute discretion, without any liability whatsoever.

APARTMENT PLANS

2 BHK + STUDY – TYPE B1

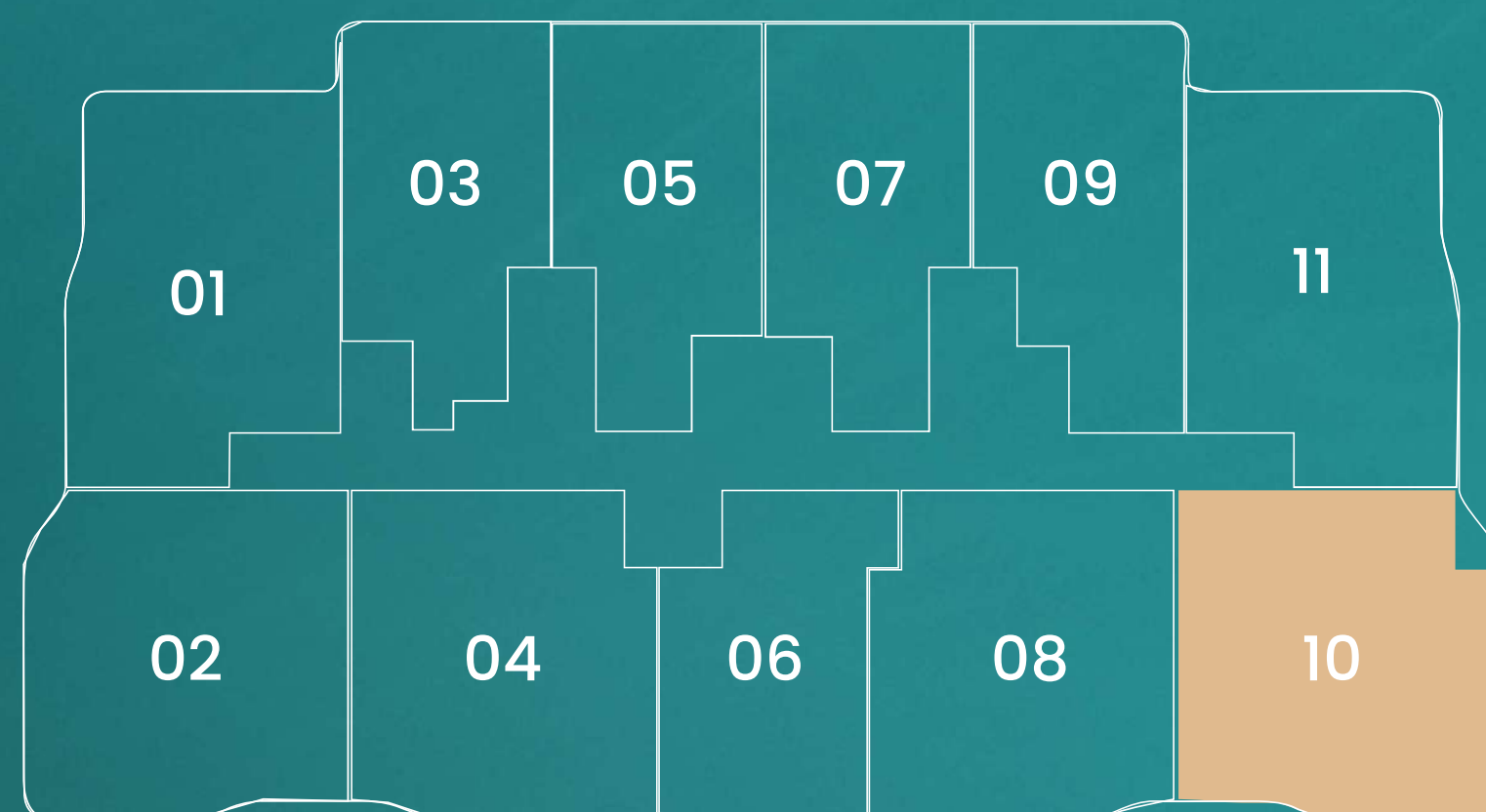


Net Area 1,041.87 sq.ft.

Balcony Area 193.58 sq.ft.

Total 1,236.76 sq.ft.

FLOOR PLATE (1ST – 6TH FLOOR)



DISCLAIMERS

1. All dimensions are in millimeter, and measured from finish to finish excluding construction tolerances. 2. All materials, dimensions and drawings are approximate only. 3. Information is subject to change without notice, at developer's absolute discretion. 4. Actual area may vary from the stated area. 5. Drawings are not to scale. 6. All images used are for illustrative purposes only and do not represent the actual size, features, specifications, fittings and furnishing. 7. The developer reserves the right to make revisions or alterations, at its absolute discretion, without any liability whatsoever.

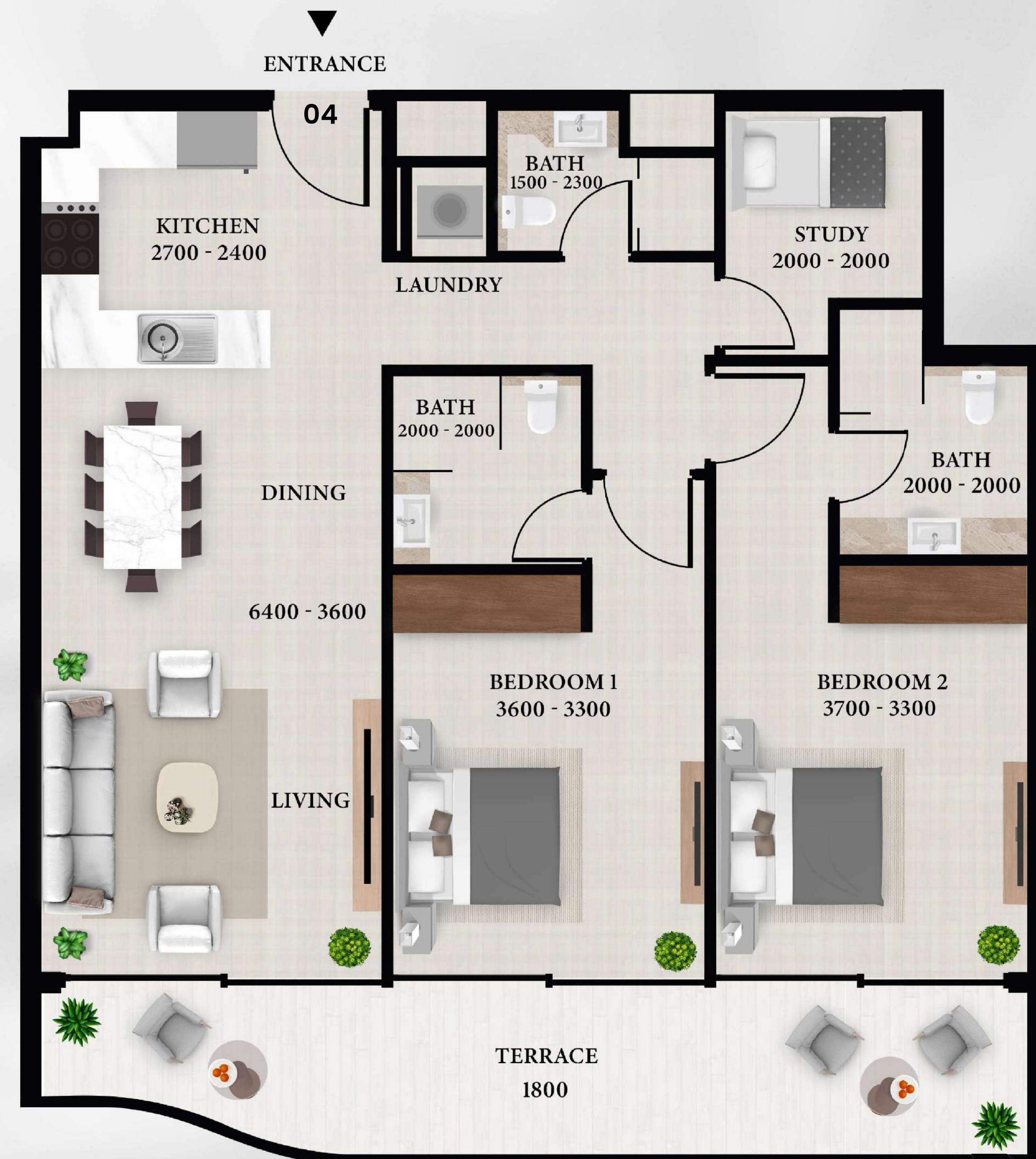
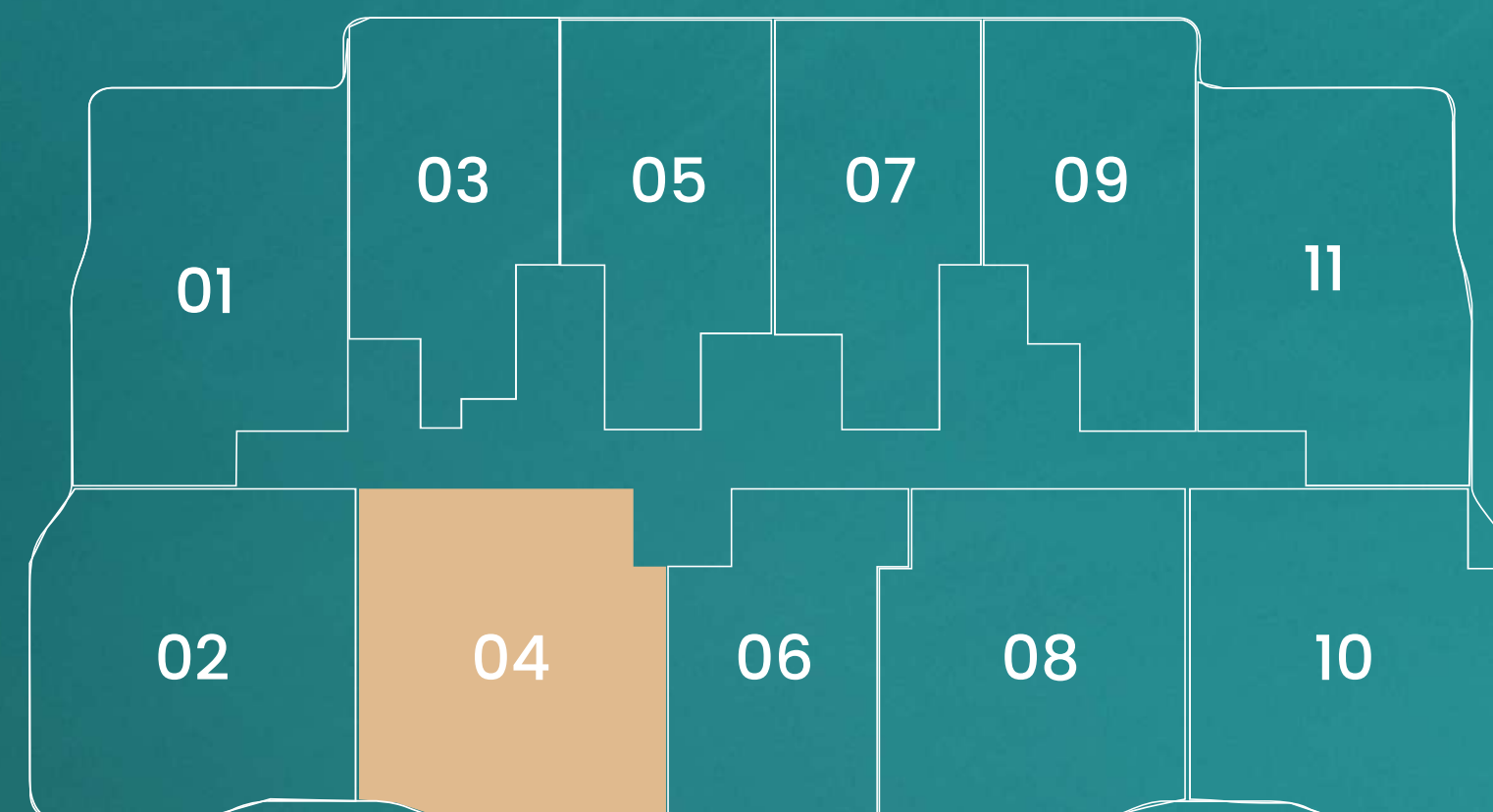
APARTMENT PLANS

2 BHK + STUDY – TYPE B

Net Area 1,024.61 sq.ft.
Balcony Area 192.87 sq.ft.

Total 1,217.48 sq.ft.

FLOOR PLATE (1ST – 6TH FLOOR)



DISCLAIMERS

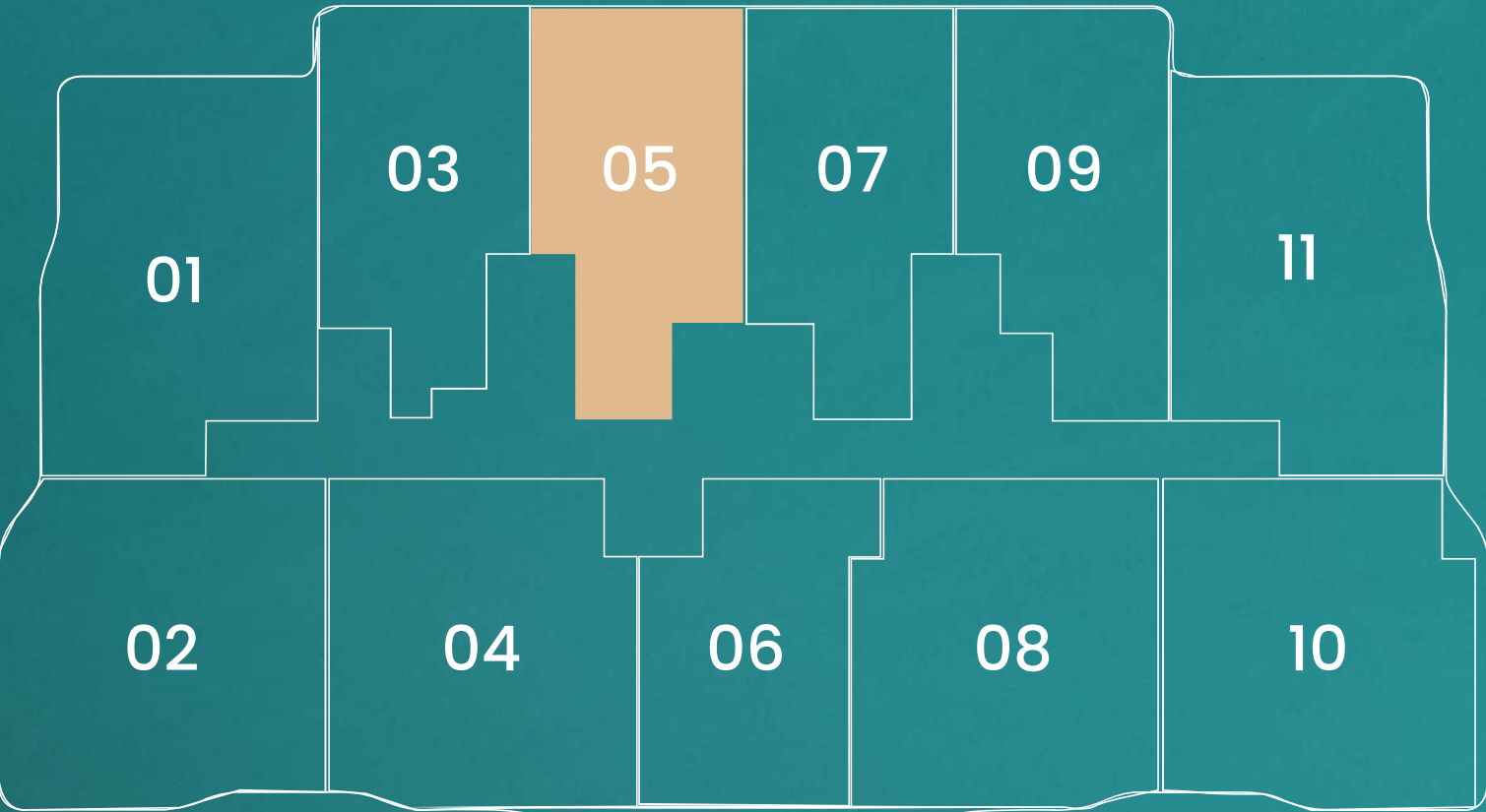
1. All dimensions are in millimeter, and measured from finish to finish excluding construction tolerances. 2. All materials, dimensions and drawings are approximate only. 3. Information is subject to change without notice, at developer's absolute discretion. 4. Actual area may vary from the stated area. 5. Drawings are not to scale. 6. All images used are for illustrative purposes only and do not represent the actual size, features, specifications, fittings and furnishing. 7. The developer reserves the right to make revisions or alterations, at its absolute discretion, without any liability whatsoever.

APARTMENT PLANS

1 BHK + STUDY – TYPE B

Net Area	752.92 sq.ft.
Balcony Area	139.12 sq.ft.
<hr/>	
Total	892.04 sq.ft.

FLOOR PLAN (FOR REFERENCE ONLY)



DISCLAIMERS

1. All dimensions are in millimeter, and measured from finish to finish excluding construction tolerances. 2. All materials, dimensions and drawings are approximate only. 3. Information is subject to change without notice, at developer's absolute discretion. 4. Actual area may vary from the stated area. 5. Drawings are not to scale. 6. All images used are for illustrative purposes only and do not represent the actual size, features, specifications, fittings and furnishing. 7. The developer reserves the right to make revisions or alterations, at its absolute discretion, without any liability whatsoever.

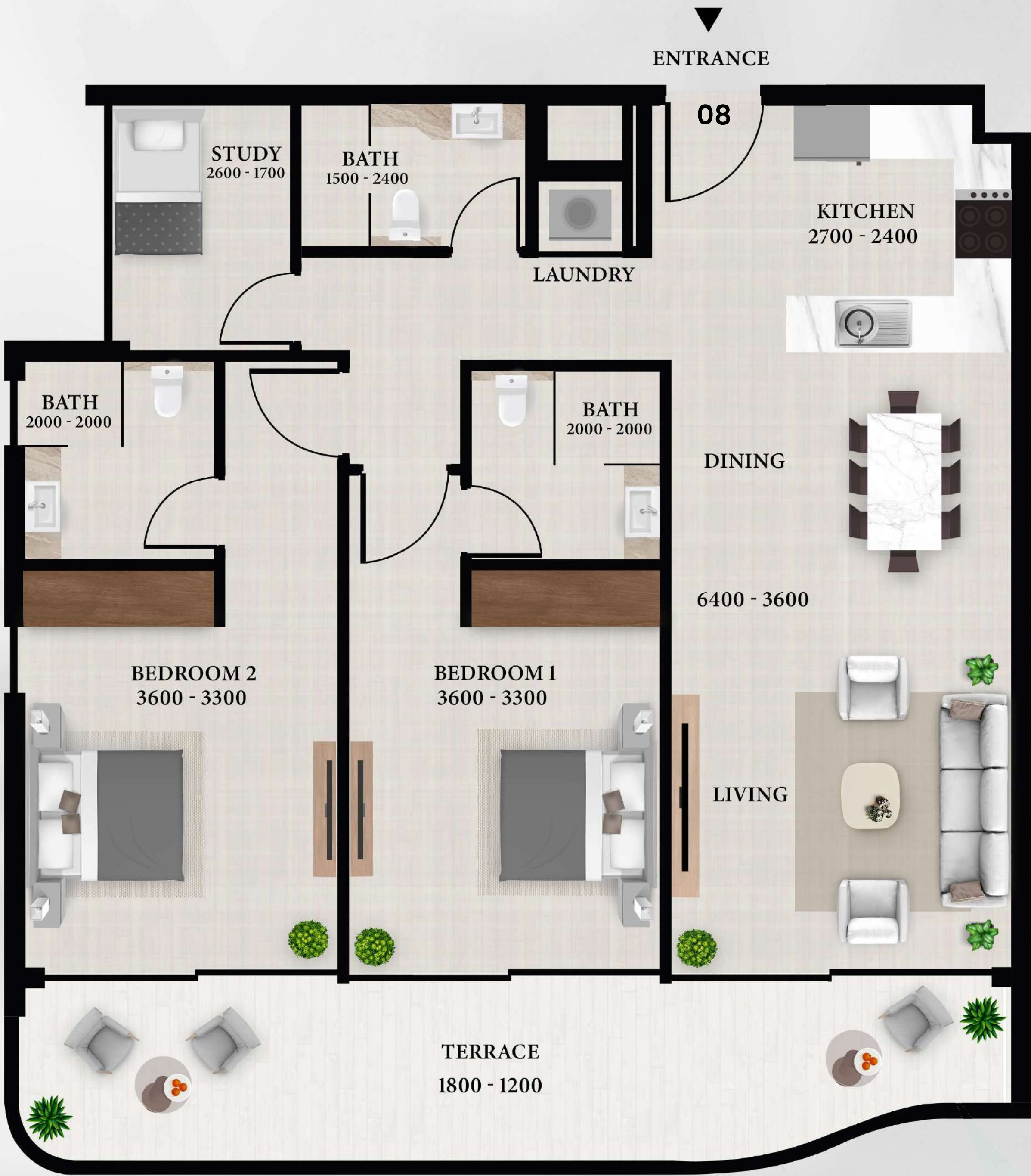
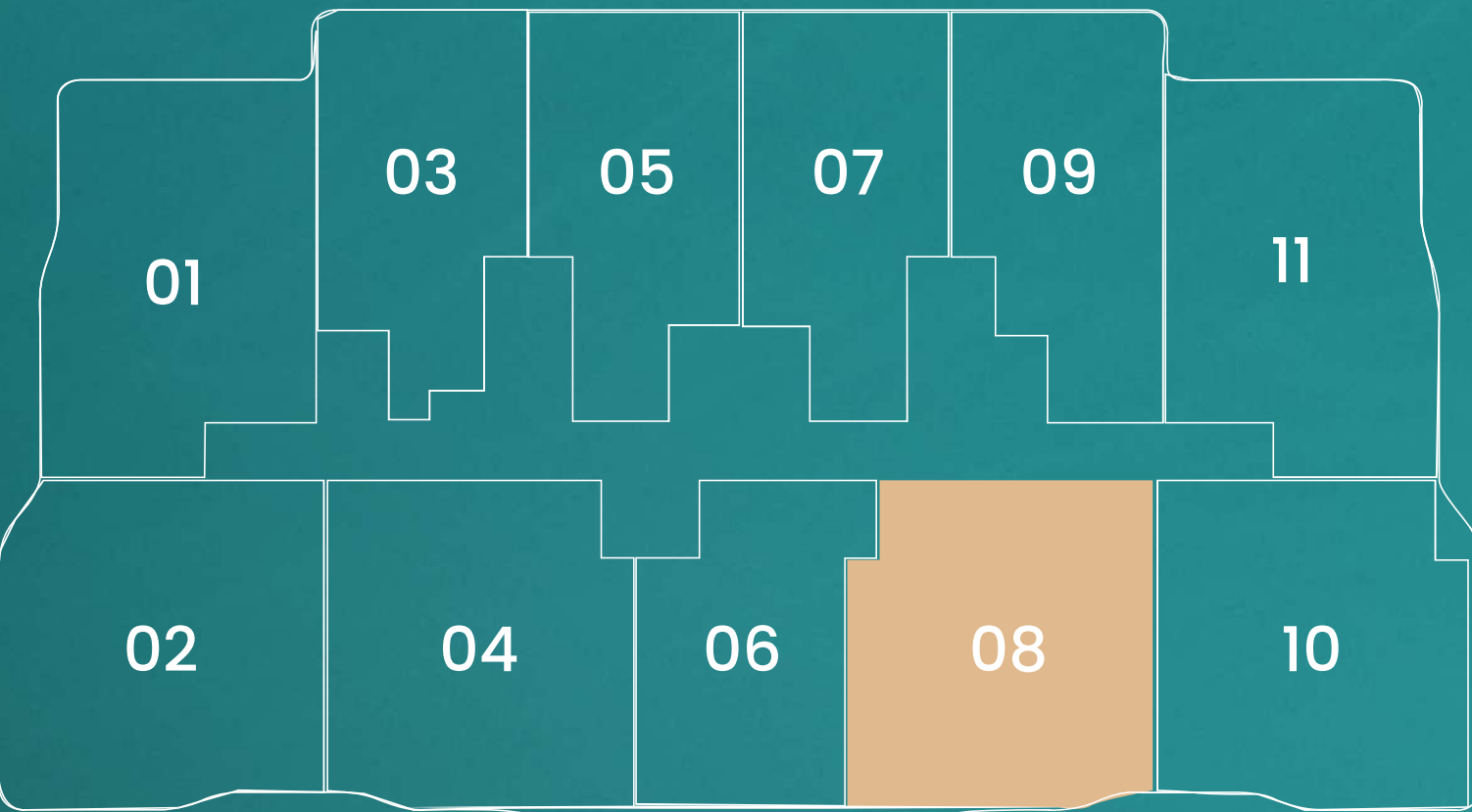
APARTMENT PLANS

2 BHK + STUDY – TYPE A1

Net Area 1,024.68 sq.ft.
Balcony Area 177.60 sq.ft.

Total 1,203.74 sq.ft.

FLOOR PLATE (1ST – 6TH FLOOR)



DISCLAIMERS

1. All dimensions are in millimeter, and measured from finish to finish excluding construction tolerances. 2. All materials, dimensions and drawings are approximate only. 3. Information is subject to change without notice, at developer's absolute discretion. 4. Actual area may vary from the stated area. 5. Drawings are not to scale. 6. All images used are for illustrative purposes only and do not represent the actual size, features, specifications, fittings and furnishing. 7. The developer reserves the right to make revisions or alterations, at its absolute discretion, without any liability whatsoever.



T: +971 4 4370431 | W: 971502859321 | E: info@**skyviedevelopment.ae**

www.skyviedevelopment.ae
800SKYVIEW