

VEGA

BY

ACUBE
DEVELOPMENTS



VEGA

Vega draws its name from the brightest star in the northern constellation of Lyra. Rising as a G+3P+18F residential building, Vega stands tall in the vibrant district of Dubai Sports City, renowned for its energetic lifestyle and modern amenities.

As our third thriving project, Vega offers a stunning selection of luxury studio, one-, two-, and three-bedroom apartments, each thoughtfully designed to blend comfort, style & functionality. Inspired by the soothing essence of nature, Vega incorporates carefully chosen elements to bring the outdoors in, creating a rejuvenating living environment.





Dubai Sport City



Vega is perfectly positioned in Dubai Sports City, a dynamic hub celebrated for its world-class sports facilities, expansive green landscapes, and an impressive array of lifestyle amenities. Residents of Vega can enjoy unparalleled convenience, with proximity to top-tier schools, premium healthcare facilities, and an array of recreational options, including cricket stadiums, golf courses, football arenas, and more. The neighborhood also boasts a rich selection of shopping malls, lush parks, and diverse dining experiences to suit every palate.

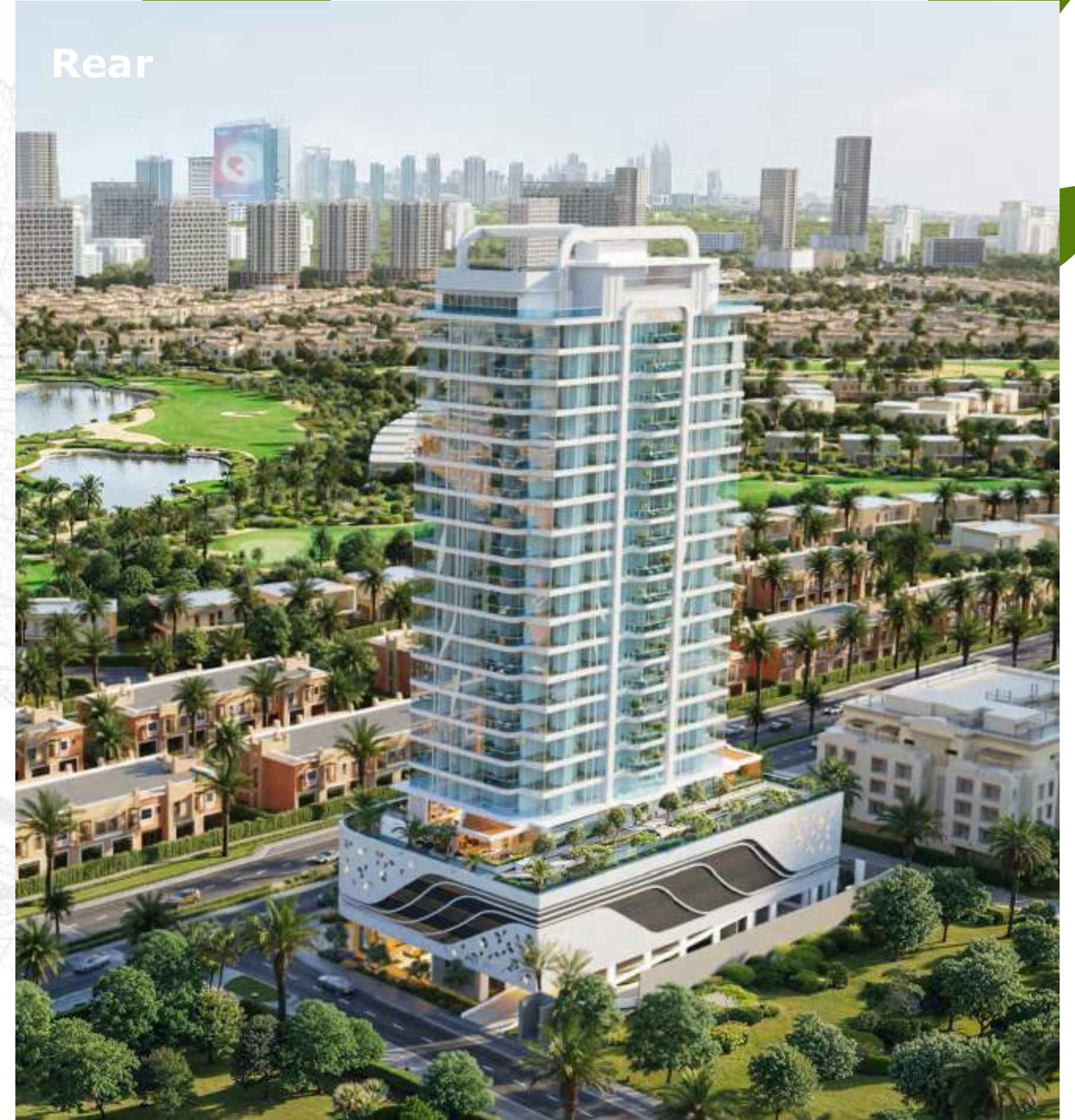
With seamless connectivity to Dubai's iconic landmarks—such as the Burj Al Arab, Palm Jumeirah, and Downtown Dubai—along with easy access to major transportation routes, Dubai Sports City offers an unmatched blend of convenience and sophistication, making Vega the perfect home to experience it all.



Front

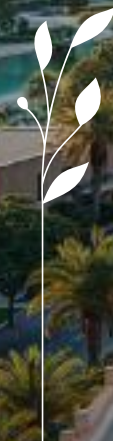


Rear



Note: Work in Progress & Subject to Changes. Not for General Use!

 Panoramic views
breathtaking horizons



Whether you crave the calm of a serene day or the energy of a vibrant evening, Vega's thoughtfully designed amenities offer a seamless balance of nature and luxury, making it a place where you can live, relax, and truly feel at home.



Within Reach



0-5 Minutes

- Dubai International Cricket Stadium
- Dubai Autodrome
- The Els Club
- Jumeirah Village Circle
- Jumeirah Village Triangle
- Arjan
- Motor City
- Production City

10-15 Minutes

- Burj Al Arab
- Palm Jumeirah
- Al Barsha
- Dubai Internet City
- Dubai Studio City
- Dubai Investment Park
- Expo 2020
- Al Furjan

15-25 Minutes

- Downtown / Burj Khalifa
- Business Bay
- Dubai Marina
- Dubai Investments Park
- Jebel Ali
- Al Makhtoum International Airport
- IMG Worlds of Adventure
- Global Village

Schools

- The Royal Grammar School (8 minutes away)
- Dwight School Dubai (8 minutes away)
- Australian International School (8 minutes away)
- JSS International School (8 mins. Away)
- Gems Metropole School (10 minutes away)
- Sunmarke School (10 minutes away)
- Gems Founders School (12 minutes away)
- King's School Al Barsha (11 minutes away)

Hospitals

- HMC Medical Center (9 minutes away)
- Medcare Medical Center (9 minutes away)
- Emirates Hospital Day Surgery (10 minutes away)
- Saudi German Hospital (11 minutes away)
- Mediclinic Parkview Hospital (11 minutes away)
- American Hospital (13 minutes away)
- NMC Royal Hospital (14 minutes away)

Malls

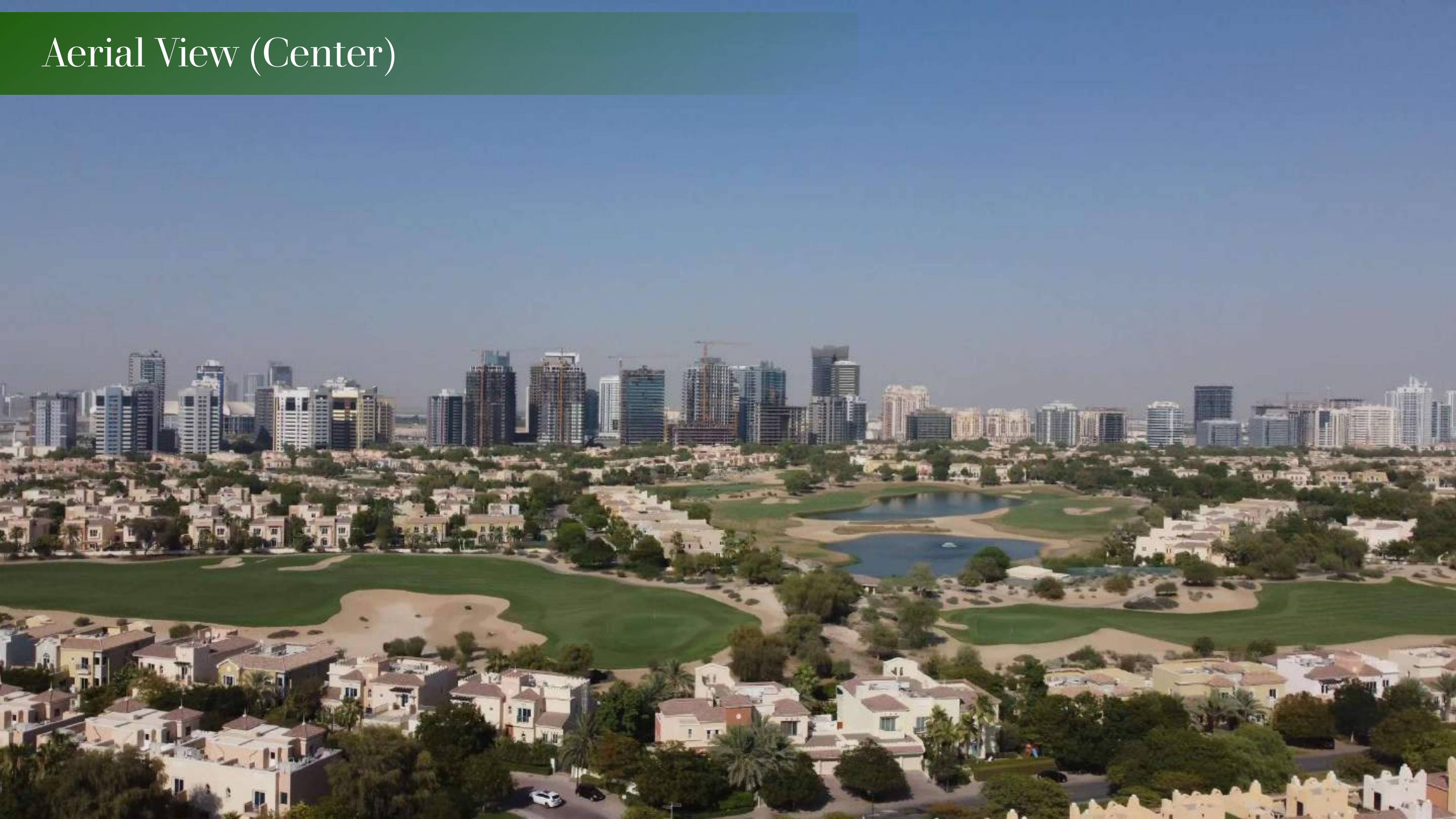
- City Centre Meaisem (3 minutes Away)
- Dubai Hills Mall (13 minutes Away)
- Circle Mall JVC (14 minutes Away)
- Dubai Marina Mall (15minutes Away)
- Ibn Battuta (16 minutes Away)
- Al Barsha Mall (16 minutes Away)
- Mall of the Emirates (20 minutes Away)
- Dubai Mall (25 minutes Away)



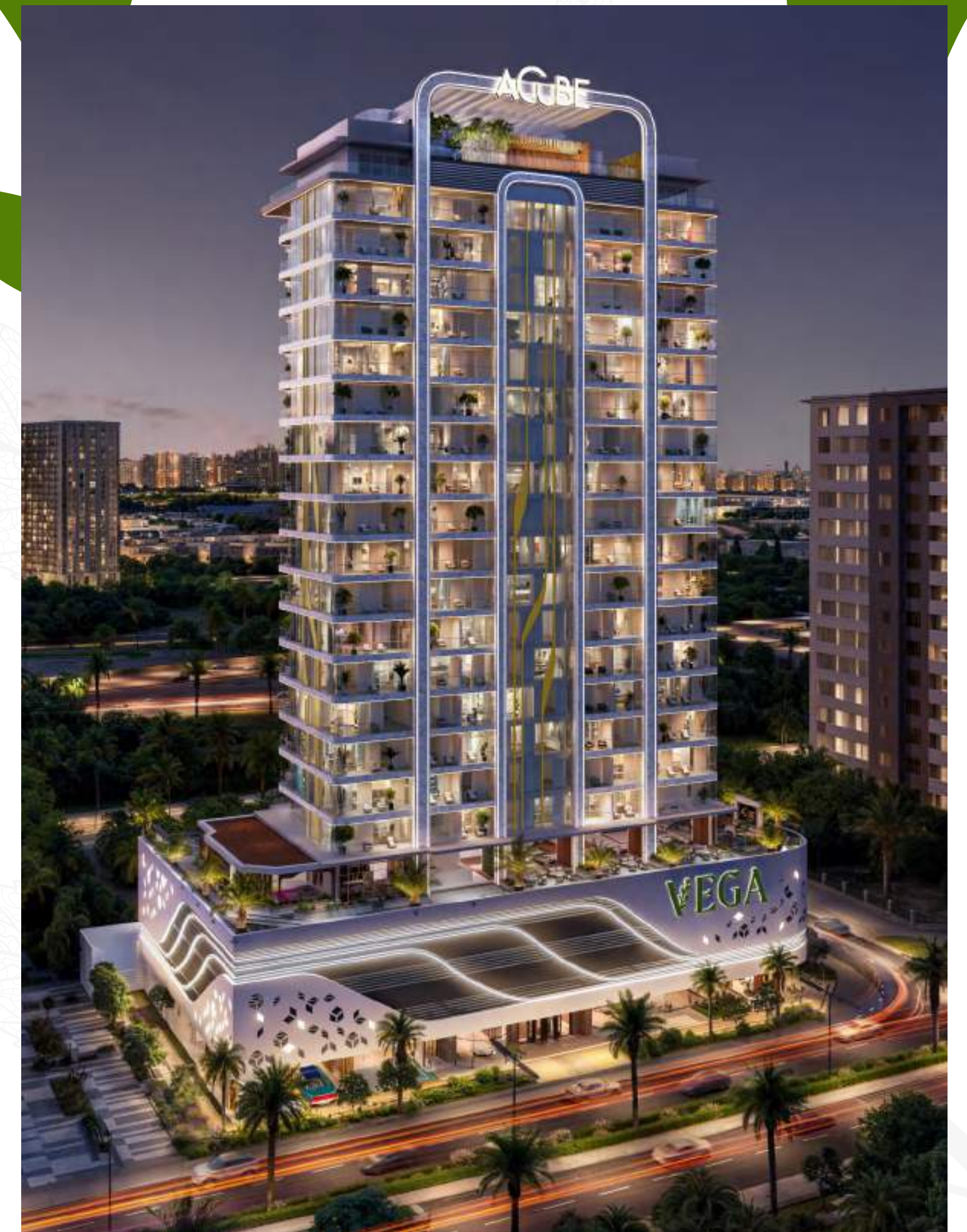
our gateway to
anywhere in Dubai



Aerial View (Center)



Savor life's
quiet moments



35+

Amenities

Amenities



Modern
Lobby



CrossFit
Area



Jogging
Track



Net
Cricket



Table
Tennis



Pickleball
Court



Wellness
Garden



Rock
Oasis



Sensory Water
Therapy



Pilates
Studio



Outdoor
Yoga Studio



Outdoor
Cinema



Multi
Function Hall



Co-working
Lounge



Gamers'
Lounge



Kids' Indoor
Play Area



Kids' Outdoor
Play Area



Toddler
Play Area



Children's
Library



Ladies
Sauna



Ladies
Jacuzzi



Ladies
Steam Room



Gents
Sauna



Gents
Jacuzzi



Gents
Steam Room



Fully Equipped
Gym



Water
Fall



Water
Cave



Pool Deck
Lounge



Sky
Pool



Kids'
Pool



ANPR
System



E-vehicle
Charging



Facial
Recognition Access



24/7
Security



Pet
Friendly



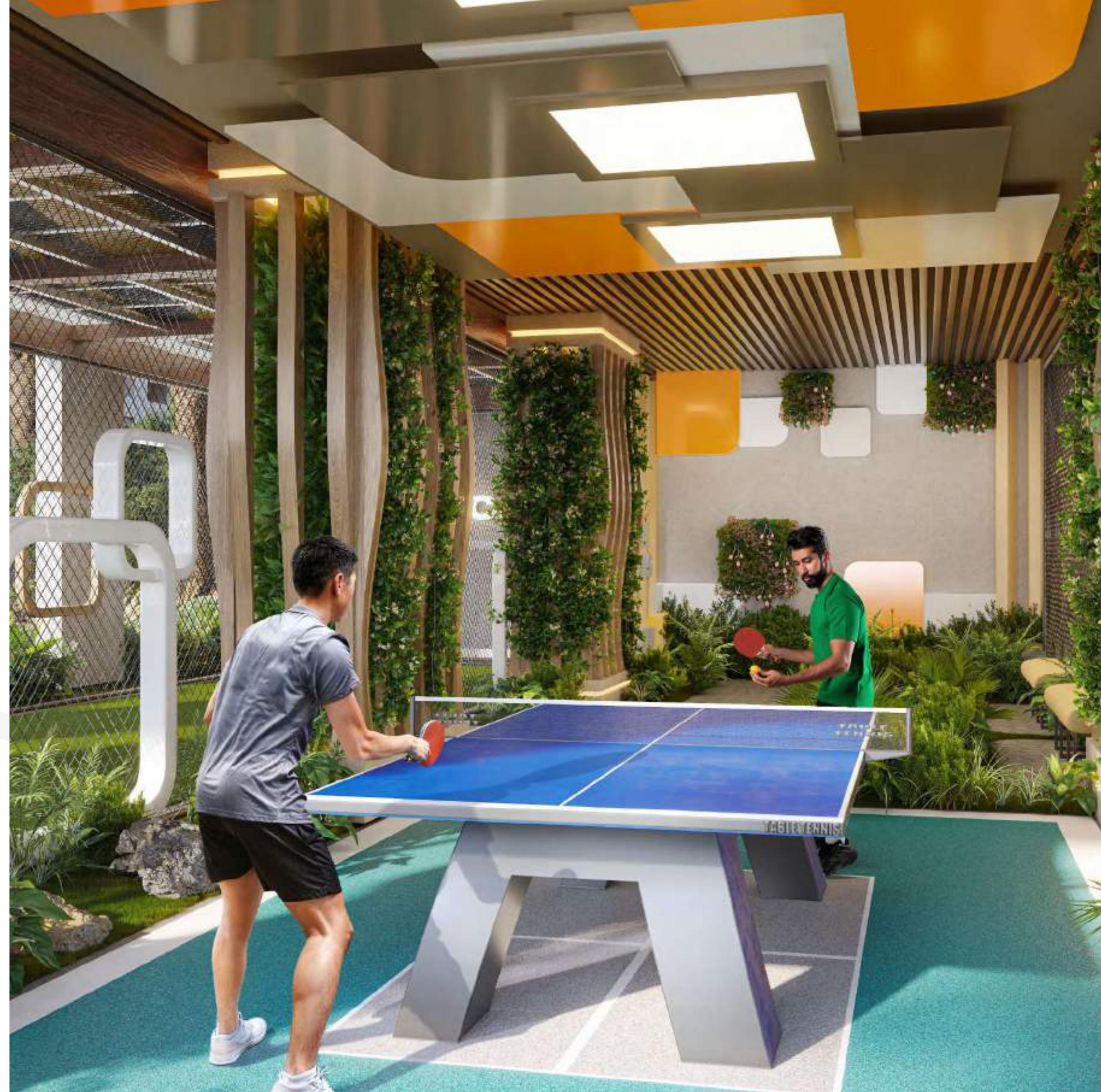
Vastu
Compliant

Every day is a new experience with our thoughtfully put-together world-class amenities, from immersive pools to therapeutic wellness facilities such as a separate sauna, jacuzzi, and steam rooms for men and women, prioritizing privacy. Everything you need is right here.

Life in nature
starts here



Welcomed by nature, surrounded by exquisite amenities. From your serene rock oasis to an interactive jogging track, and a dedicated pickleball court to channel your inner champion, every detail invites relaxation and recreation in perfect coexistence.







COMMUNITY GARDEN



KID'S PLAYGROUND



GAME LOUNGE



LIFT LOBBY



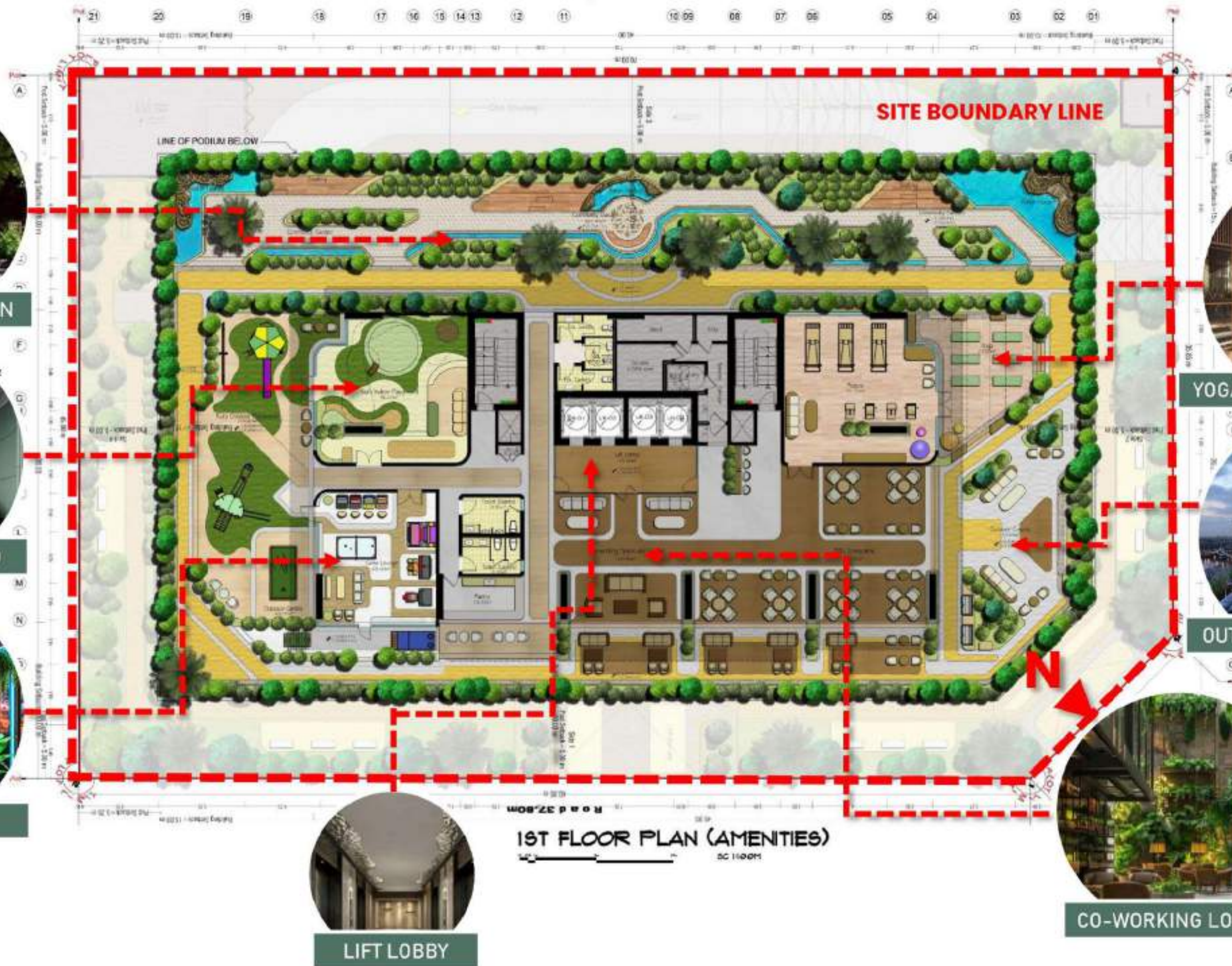
YOGA AND PILATES STUDIO



OUTDOOR CINEMA + BBQ

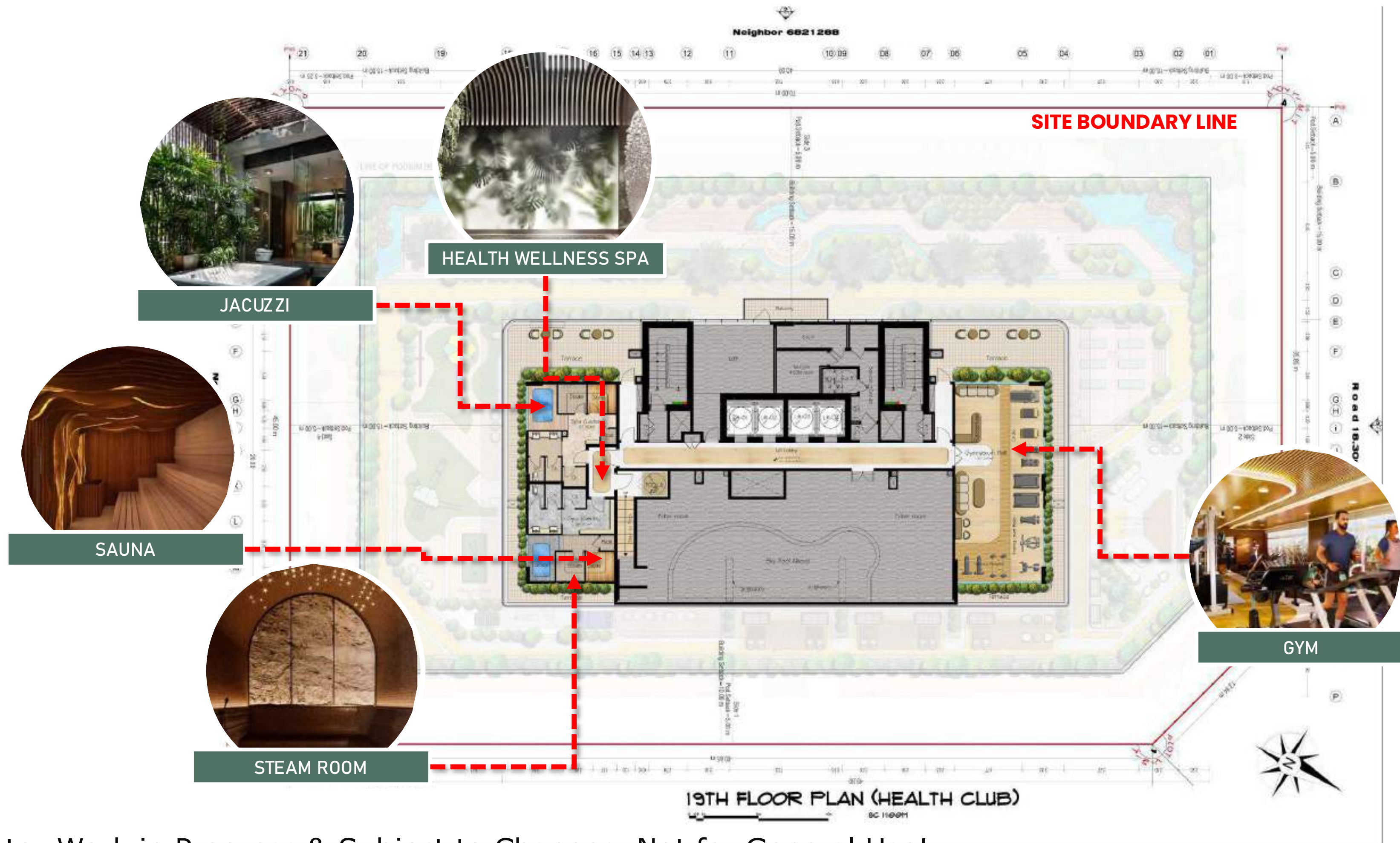


CO-WORKING LOUNGE

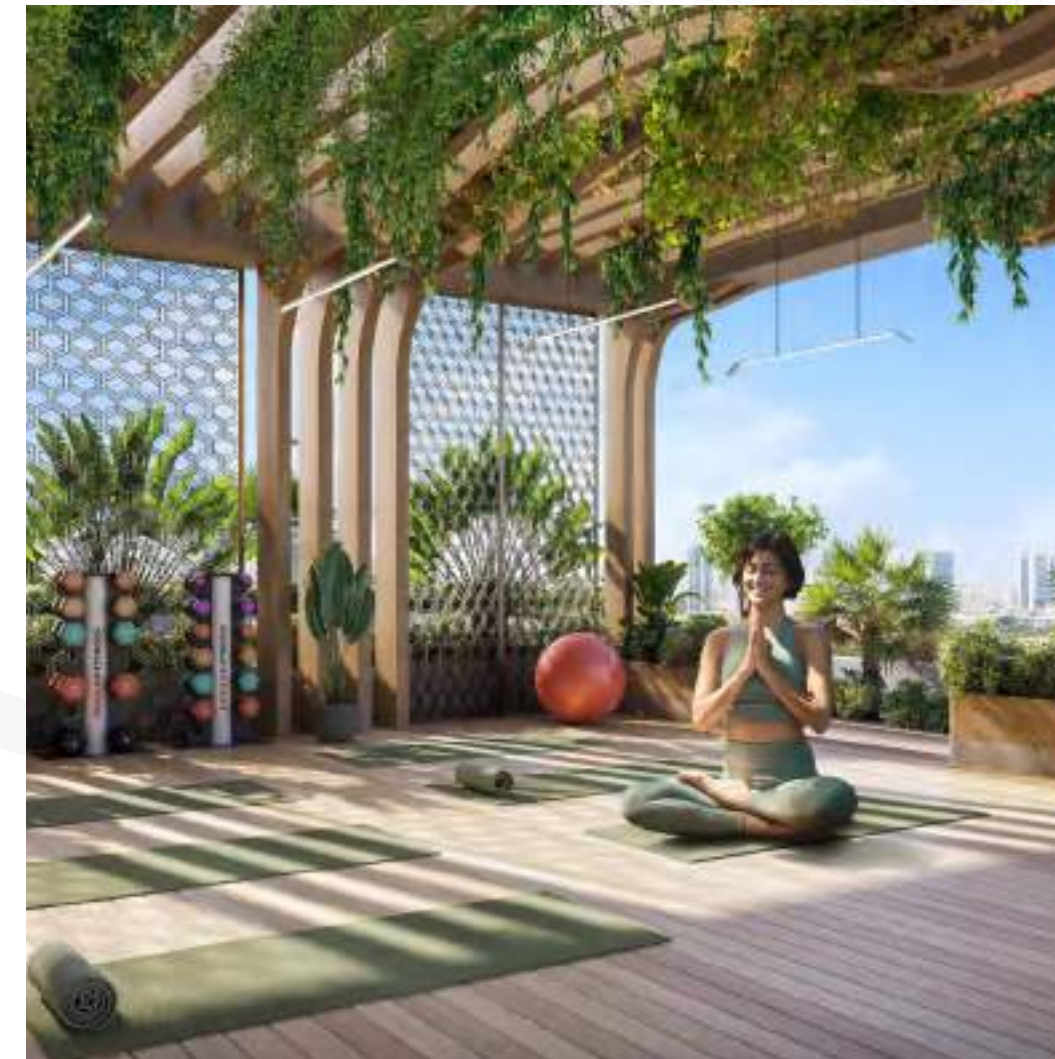


Note: Work in Progress & Subject to Changes. Not for General Use!





Note: Work in Progress & Subject to Changes. Not for General Use!



Let your cares
evaporate to nothingness



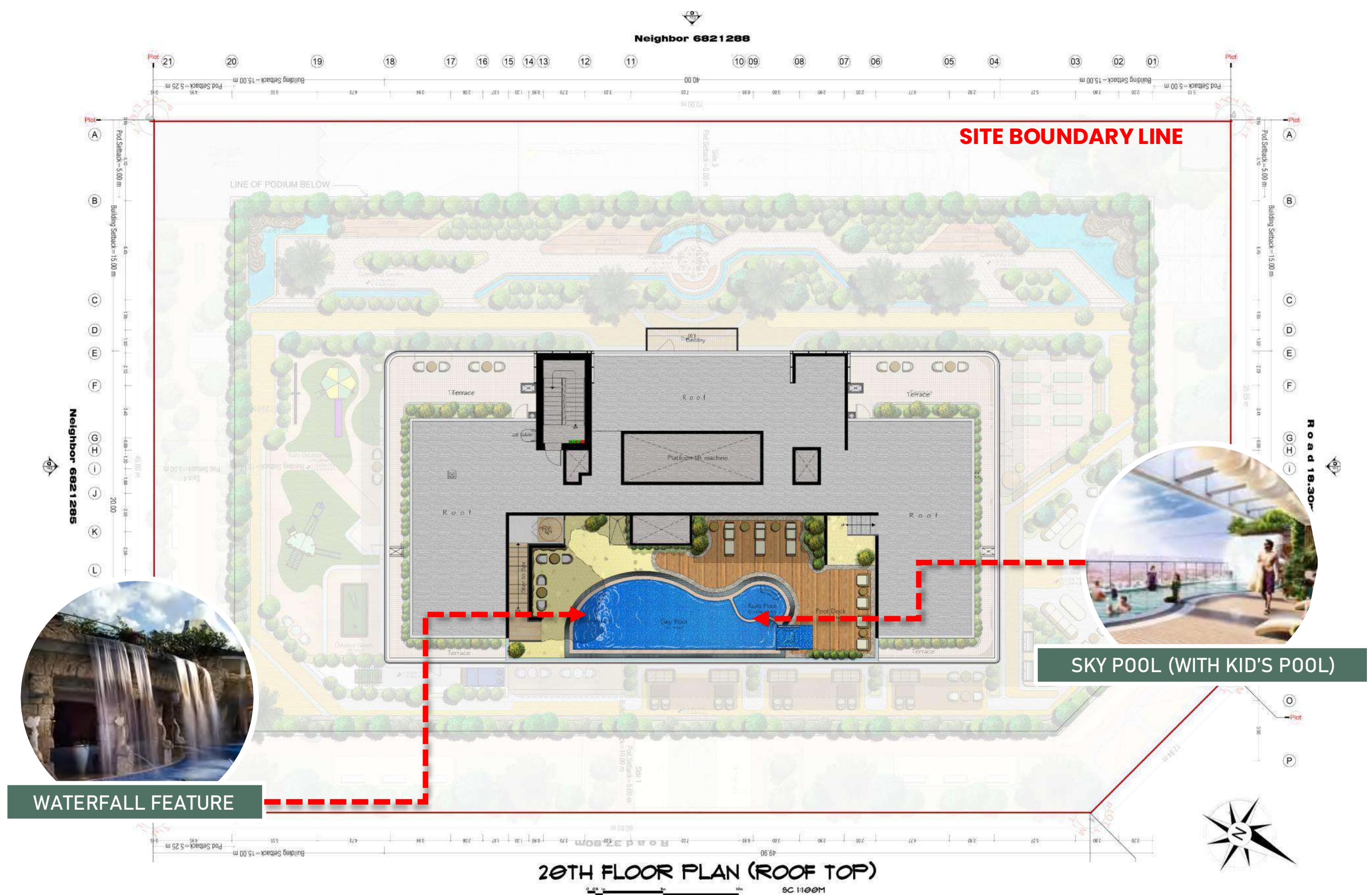
Men



Women



Let your cares take the back seat with our carefully crafted amenities, offering everything from interactive pools to rejuvenating wellness facilities including separate saunas, jacuzzis, and steam rooms for men and women, right here, at Vega.



Note: Work in Progress & Subject to Changes. Not for General Use!

Touching the water,
piercing the sky



Live Love
Laugh



Nurture warmth, love, and togetherness set in warm, inviting spaces. Paint your memories on our canvas- brushed with strokes of joy, laughter, and treasured memories.





Smart living,
crafted for you



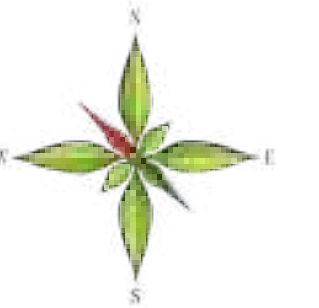
Feel at home in our thoughtfully designed, fully equipped & furnished smart homes-where the world is at your fingertips with a single touch.

Floor Plan

Inspired by nature, our carefully crafted details blend the spirit of nature with contemporary designs, standing as a testament to meticulous design and architectural brilliance.

Typical GA Plan 1

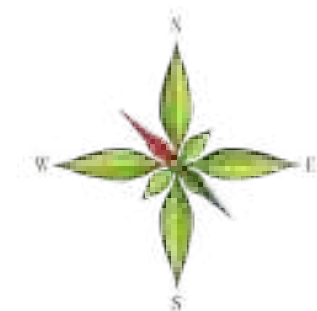
1 TO 5 Floor Plan



Disclaimer: Plan and details included are indicative only and are subject to change by the developer/seller at its sole discretion without notice and/or liability. All images, including features, finishes, furnishings and scale are illustrative only. Final areas, dimensions, layout and materials may differ from those stated.

Typical GA Plan 2

6 TO 11 Floor Plan



Disclaimer: Plan and details included are indicative only and are subject to change by the developer/seller at its sole discretion without notice and/or liability. All images, including features, finishes, furnishings and scale are illustrative only. Final areas, dimensions, layout and materials may differ from those stated.

Typical GA Plan 3

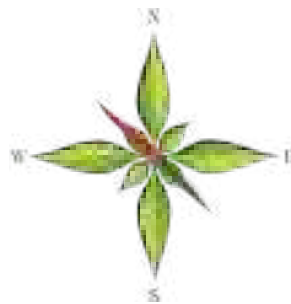
12 TO 17 Floor Plan



Disclaimer: Plan and details included are indicative only and are subject to change by the developer/seller at its sole discretion without notice and/or liability. All images, including features, finishes, furnishings and scale are illustrative only. Final areas, dimensions, layout and materials may differ from those stated.



Total Area: 412 sq. ft.



Total Area: 486 sq. ft.

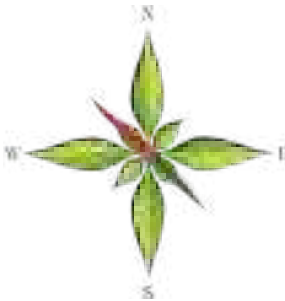


1 Bedroom

Type 1



Total Area: 746 sq. ft.



Disclaimer: Plan and details included are indicative only and are subject to change by the developer/seller at its sole discretion without notice and/or liability. All images, including features, finishes, furnishings and scale are illustrative only. Final areas, dimensions, layout and materials may differ from those stated.

1 Bedroom

Type 2



Total Area: 830 sq. ft.



Disclaimer: Plan and details included are indicative only and are subject to change by the developer/seller at its sole discretion without notice and/or liability. All images, including features, finishes, furnishings and scale are illustrative only. Final areas, dimensions, layout and materials may differ from those stated.

2 Bedroom

Type 1



Total Area: 1072 sq. ft.



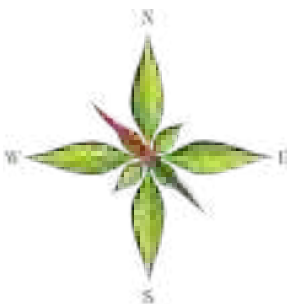
Disclaimer: Plan and details included are indicative only and are subject to change by the developer/seller at its sole discretion without notice and/or liability. All images, including features, finishes, furnishings and scale are illustrative only. Final areas, dimensions, layout and materials may differ from those stated.

2 Bedroom

Type 2



Total Area: 1113 sq. ft.



Disclaimer: Plan and details included are indicative only and are subject to change by the developer/seller at its sole discretion without notice and/or liability. All images, including features, finishes, furnishings and scale are illustrative only. Final areas, dimensions, layout and materials may differ from those stated.

2 Bedroom

Type 3



Total Area: 1077 sq. ft.

Disclaimer: Plan and details included are indicative only and are subject to change by the developer/seller at its sole discretion without notice and/or liability. All images, including features, finishes, furnishings and scale are illustrative only. Final areas, dimensions, layout and materials may differ from those stated.



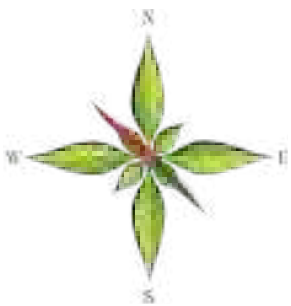
2 Bedroom

Type 4



Total Area: 1206 sq. ft.

Disclaimer: Plan and details included are indicative only and are subject to change by the developer/seller at its sole discretion without notice and/or liability. All images, including features, finishes, furnishings and scale are illustrative only. Final areas, dimensions, layout and materials may differ from those stated.



3 Bedroom

Type 1



Total Area: 1488 sq. ft.

Disclaimer: Plan and details included are indicative only and are subject to change by the developer/seller at its sole discretion without notice and/or liability. All images, including features, finishes, furnishings and scale are illustrative only. Final areas, dimensions, layout and materials may differ from those stated.

ACUBE
DEVELOPMENTS

LIVE /
ON A
STAR

sales@acube.ae | 800 2282 (800 ACUB)
P2 R04-01, The Onyx Tower 1, Sheikh Zayed Road, Dubai, UAE

