



LE PARCHOMES II

AT JUMEIRAH VILLAGE CIRCLE

DUBAI

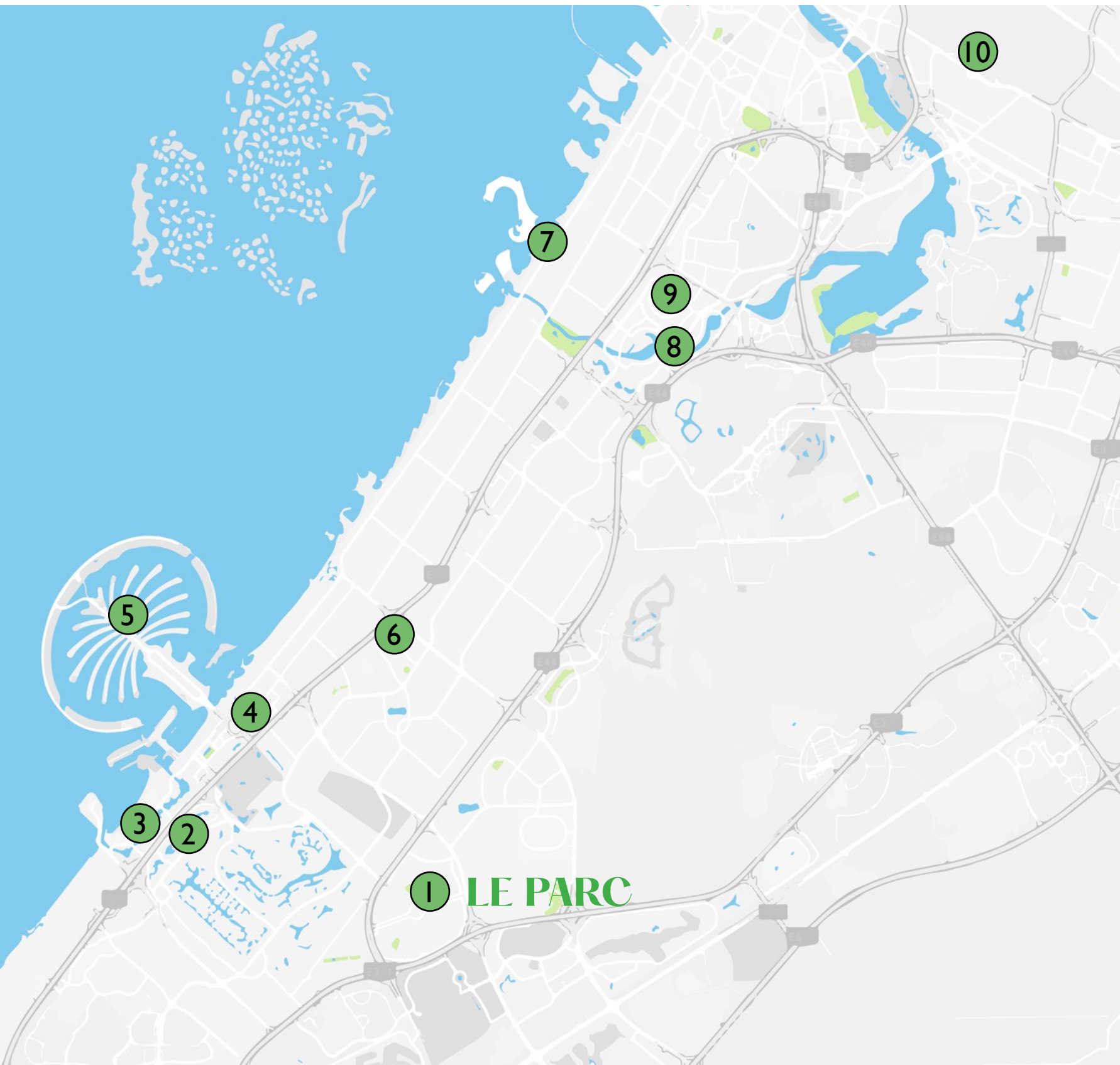
Discover the gleaming desert jewel of Dubai, where modernity meets tradition and the possibilities are limitless. With its iconic skyscrapers, crystal-clear waters, and vibrant culture, Dubai is the ultimate destination for those seeking luxury and adventure.

From the bustling souks to the luxurious shopping destinations, Dubai offers a range of experiences that cater to every taste.

But Dubai isn't just about glitz and glamour. The city also boasts a rich cultural heritage, with museums and galleries that showcase the art, history, and traditions of the region.



JUMEIRAH VILLAGE CIRCLE



Jumeirah Village Circle, a tranquil haven in the bustling city of Dubai. Here, amidst beautifully landscaped gardens and winding streets, you'll find a community like no other. Our spacious and modern townhouses, offer a luxurious escape from the fast-paced world, while still being within easy reach of all the city has to offer.

Jumeirah Village Circle is more than just a place to live, it's a lifestyle. With top-rated schools, shopping centers, and recreational facilities, JVC is the perfect place for families and young professionals alike.

DESTINATIONS

1. LE PARC
2. JLT
3. Dubai Marina & JBR
4. Media City & Internet City
5. Palm Jumeirah
6. Mall of the Emirates
7. Jumeirah Beach
8. Business Bay
9. Burj Khalifa - Downtown Dubai
10. DXB Airport

WHERE
STYLE
MEETS
COMFORT



INTRTODUCING LE PARC HOMES II

A luxurious townhouse development located in the highly desirable Jumeirah Village Circle. These 4-bedroom plus maids units spanning 3 floors with roof-top terrace offers a meticulously designed living space, crafted to provide the perfect combination of luxury and comfort.

Designed with a contemporary and minimalist approach, the interiors of these townhouses exude elegance and sophistication. Every detail has been thoughtfully curated to ensure a seamless and serene living experience, while the soothing color palette and carefully placed lighting add to the ambiance of each room.





CONTEMPORARY DESIGN

Innovation meets sophistication. Our expertly curated selection of high-end materials, including natural stone and granite countertops, combine durability and timeless elegance to create a stunning aesthetic that will stand the test of time.

European style appliances offer state-of-the-art technology, seamlessly integrated into the design for a sleek and modern look. Warm, relaxing colors throughout the kitchen provide a calming atmosphere, perfect for unwinding after a long day.



Our luxurious master bedrooms are designed to provide you with the perfect escape from the stresses of daily life. Indulge in the peace and tranquility you deserve and create your own sanctuary for relaxation.



SOPHISTICATED INTERIORS

The living areas are spacious and beautifully designed, with floor-to-ceiling windows that flood the rooms with plenty of natural light. All bedrooms include built-in closets with a walk-in closet in the master bedroom and a luxurious en-suite bathroom with top-of-the-line fixtures and fittings from renowned Kohler.



YOUR
OWN
PERSONAL
OASIS





AMENITIES

Discover a world of refined luxury and indulgence in your own private oasis. Boasting an array of lavish amenities, including a private pool, maid's room, multiple storage spaces, laundry room and your own private roof-top terrace, every aspect has been thoughtfully designed to provide you with a life of opulence and ease.

With a second-family living room on the second floor you'll have plenty of space to entertain and relax in style. Plus, with the latest home automation and CCTV, you can rest assured that you and your family are always safe and secure.





PROJECT DETAILS

- 3 Levels 4 Bedroom townhouses
- 4500 Sqft Total Area
- 3500 BUA
- Oversized open plan
- Roof-top terrace
- Maids room
- Family room
- European-Style kitchen cabinets
- European Top-of-the-line appliances
- German sanitary ware
- Italian-Style porcelain tiles & stone
- Built-in closets
- Laundry area
- Multiple storage spaces
- Floor to ceiling windows
- 3 meters ceilings
- Home automation system ready
- Private Pool



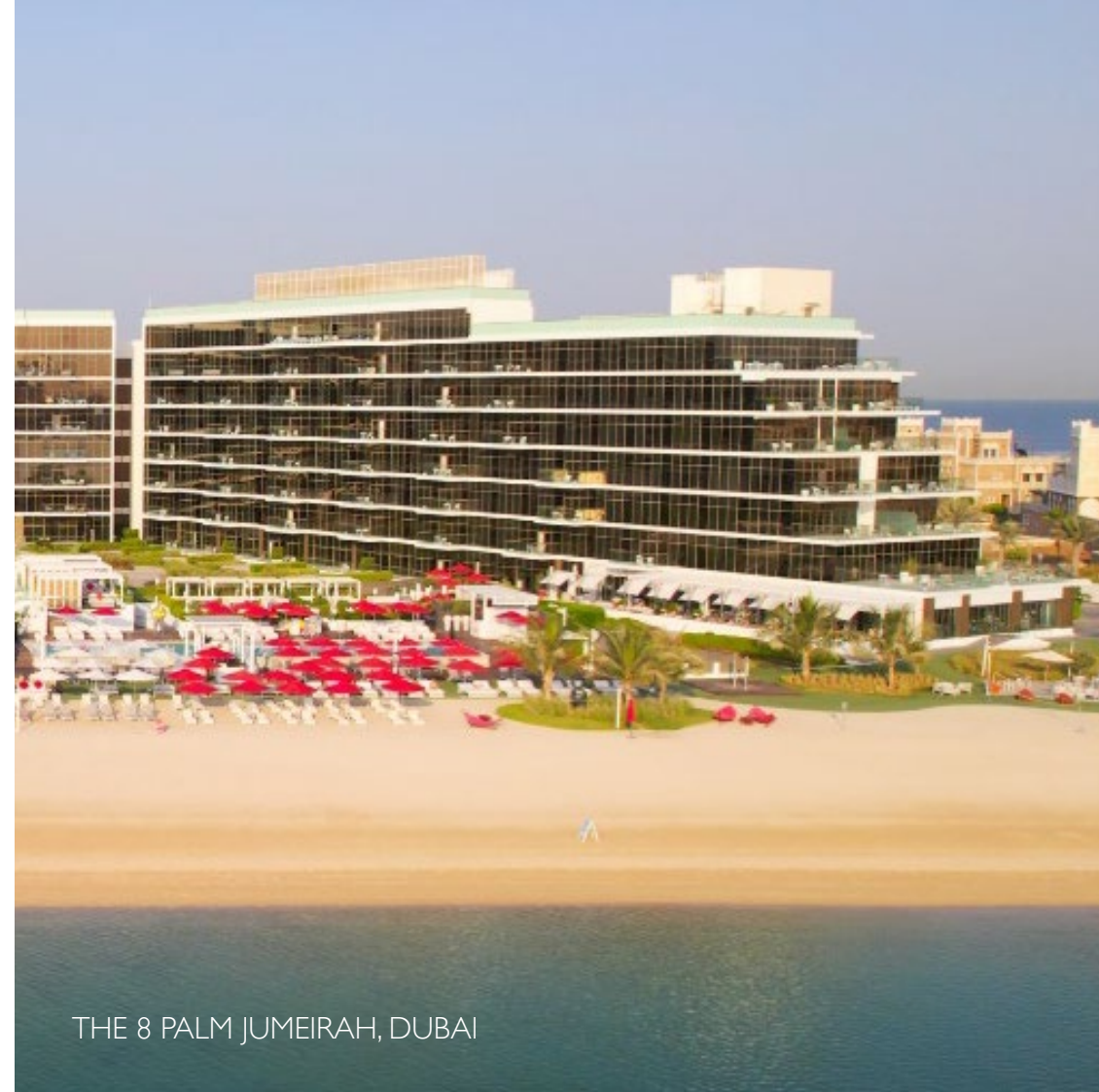


DEVELOPER

KBW Real Estate Development is a family-owned group of development companies with a presence in Dubai, Kuwait, Jordan, and Spain.

Mr.Khaled Esbaitah boasts over 30 years of experience in the real estate industry, during which he has achieved significant accomplishments such as overseeing the development of prestigious properties in Dubai, including The Fairmont Palm Jumeirah and The 8 Palm. He previously founded Mazaya Real Estate, a ground-up development company, and he currently serves as the Chairman and CEO of IFA Hotel & Resorts.

Bader Esbaitah, the managing partner of KBW Real Estate, holds a master's degree in Interior and Spatial Design from the esteemed Royal College of Arts in London. With his specialization in project interiors and procurement, he brings a wealth of expertise to the company.



THE 8 PALM JUMEIRAH, DUBAI



FAIRMONT HOTEL PALM JUMEIRAH DUBAI



VILLAS AVANI LOS FLAMINGOS BENAHAIVIS,
MALAGA SPAIN



LE PARC HOMES II PAYMENT PLAN

5%

BOOKING

25%

ON SPA
AT 15 DAYS

70%

HANDOVER
SUMMER 2024

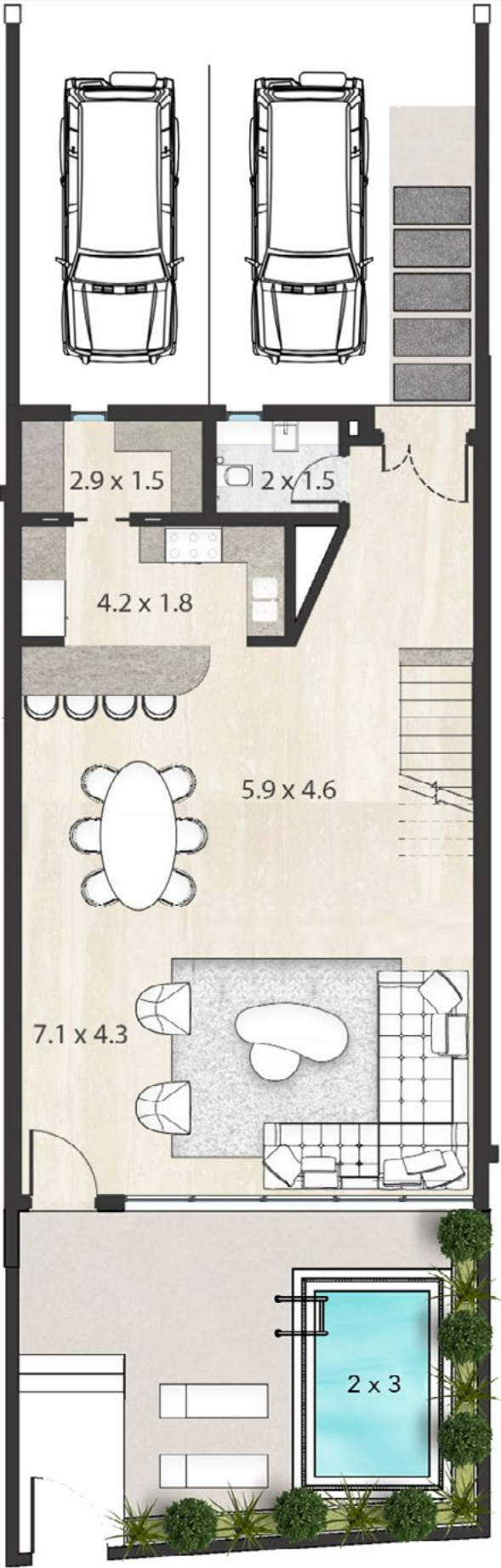
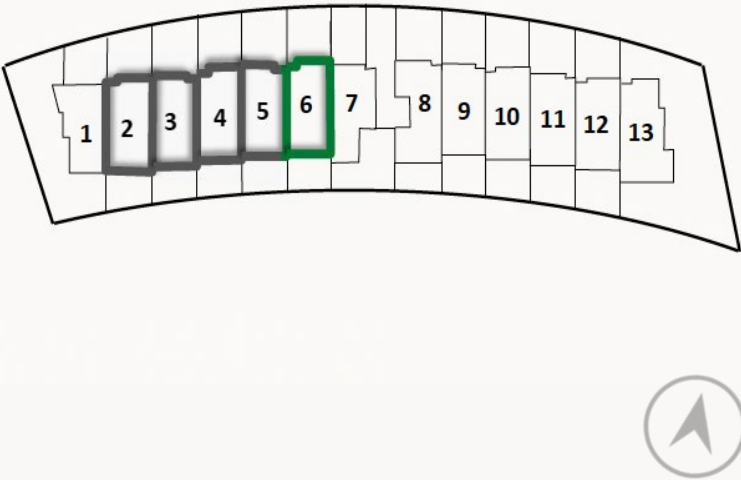


FLOORPLANS

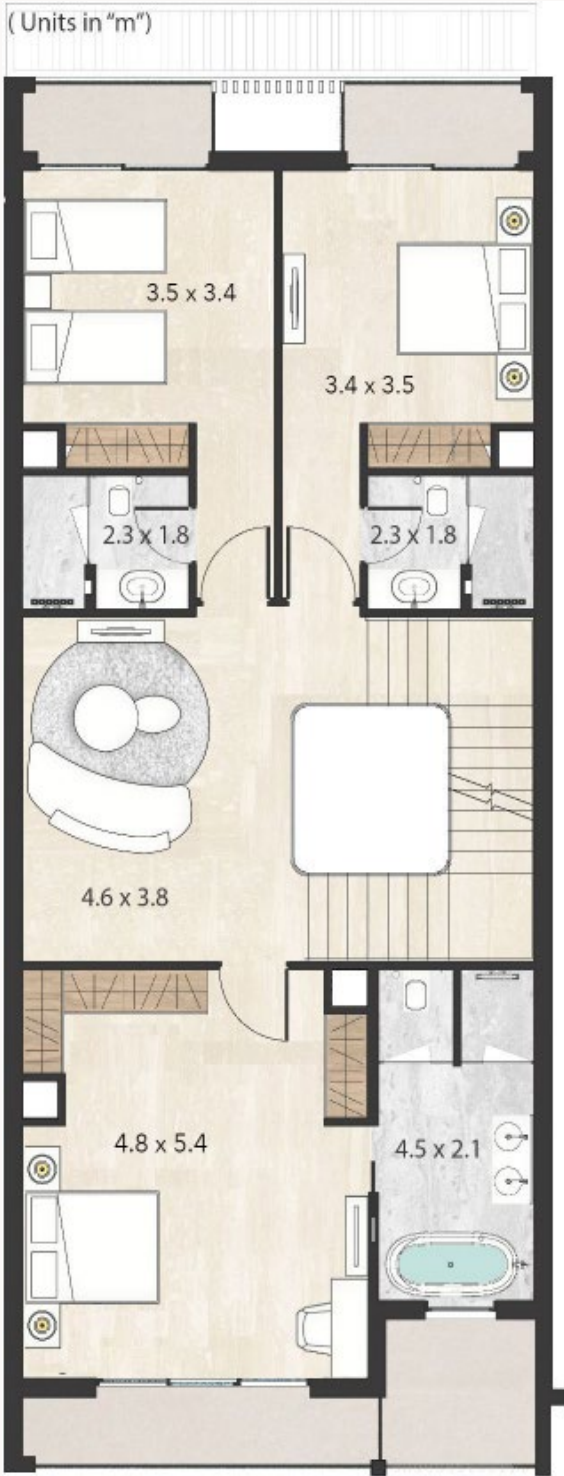
FLOORPLAN
4 BEDROOM TYPE 1A
 MIDDLE UNIT

UNIT	INTERNAL AREA	EXTERNAL AREA	TOTAL
2	3,552	1,042	4,594
3	3,549	1,039	4,588
4	3,551	1,035	4,586
5	3,551	1,032	4,583
6	3,550	1,028	4,578

KEY PLAN



GROUND FLOOR



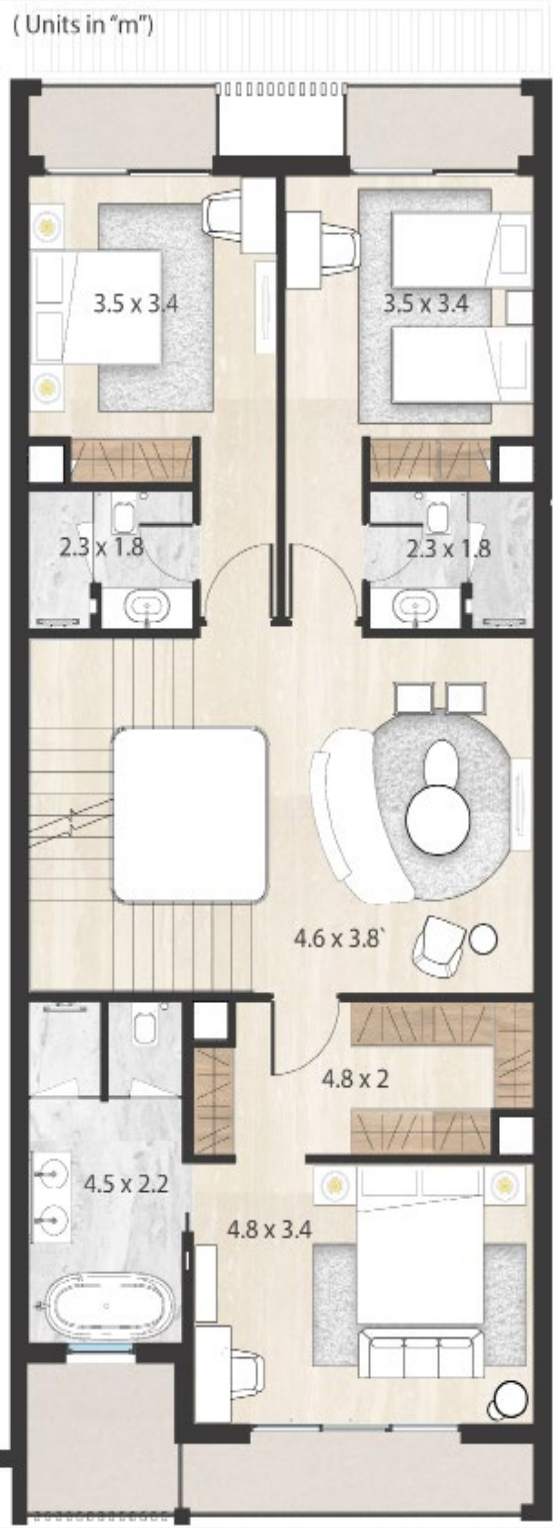
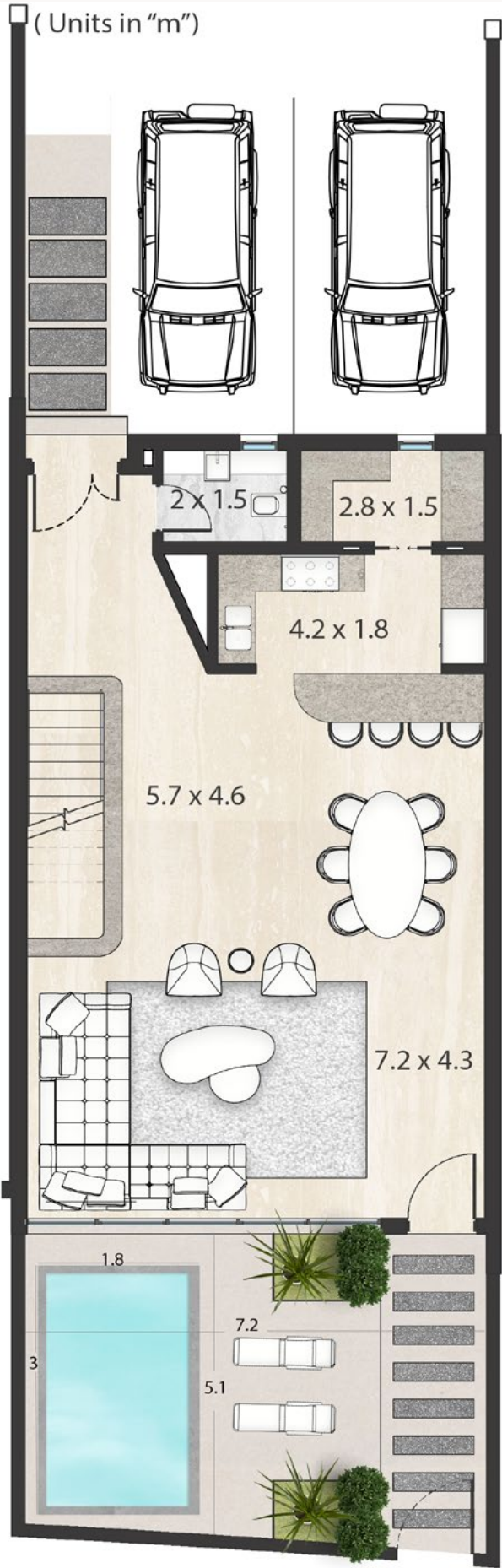
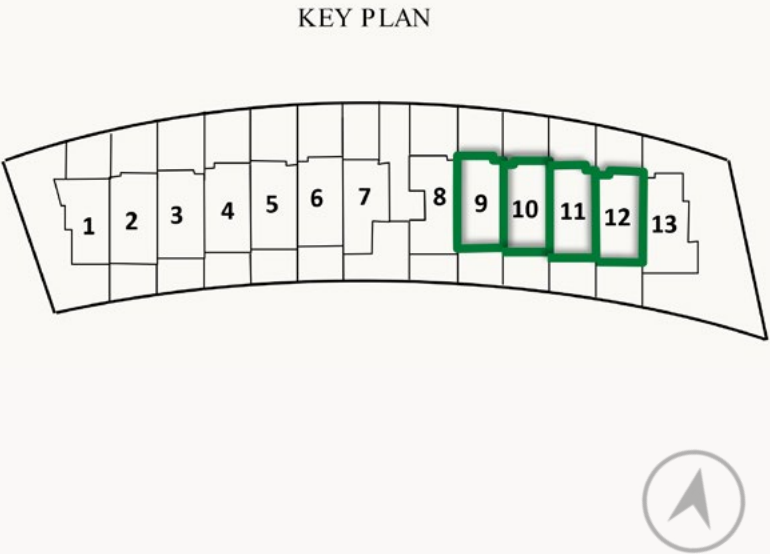
FIRST FLOOR



SECOND FLOOR

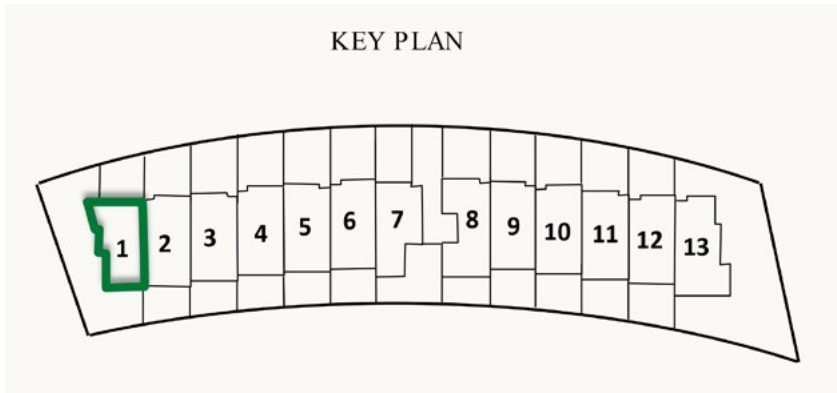
FLOORPLAN
4 BEDROOM TYPE 1B
 MIDDLE UNIT

UNIT	INTERNAL AREA	EXTERNAL AREA	TOTAL
9	3,561	1,006	4,567
10	3,560	1,003	4,563
11	3,561	998	4,559
12	3,562	996	4,558



FLOORPLAN
4 BEDROOM TYPE A
CORNER UNIT

UNIT	INTERNAL AREA	EXTERNAL AREA	TOTAL
1	3,350	1,908	5,258

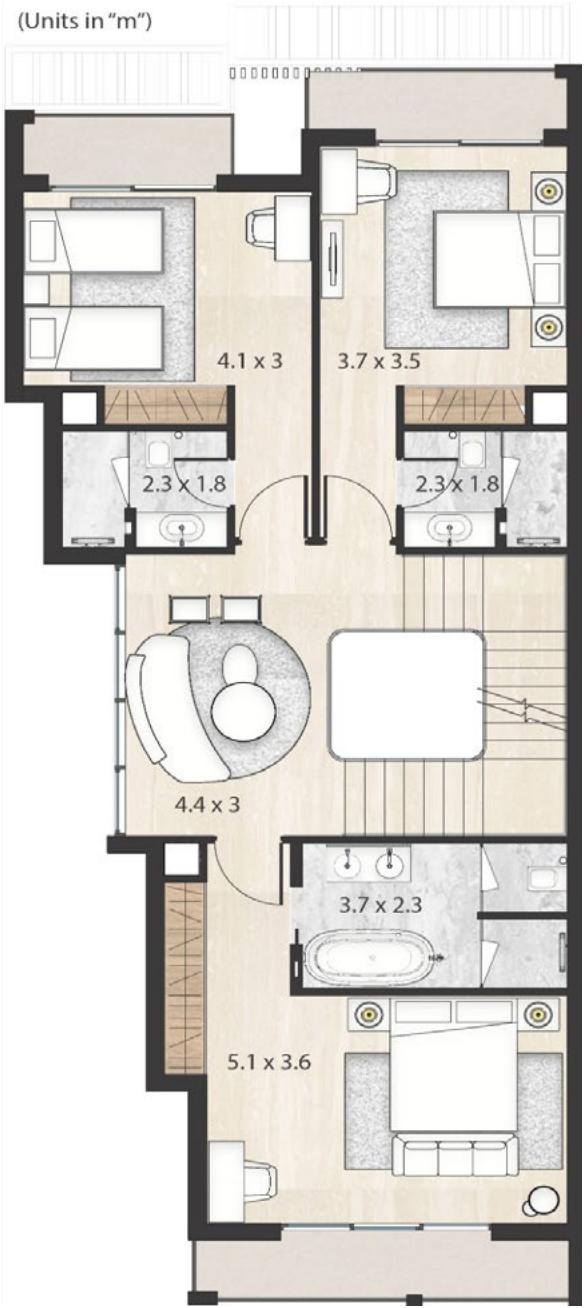


(Units in "m")



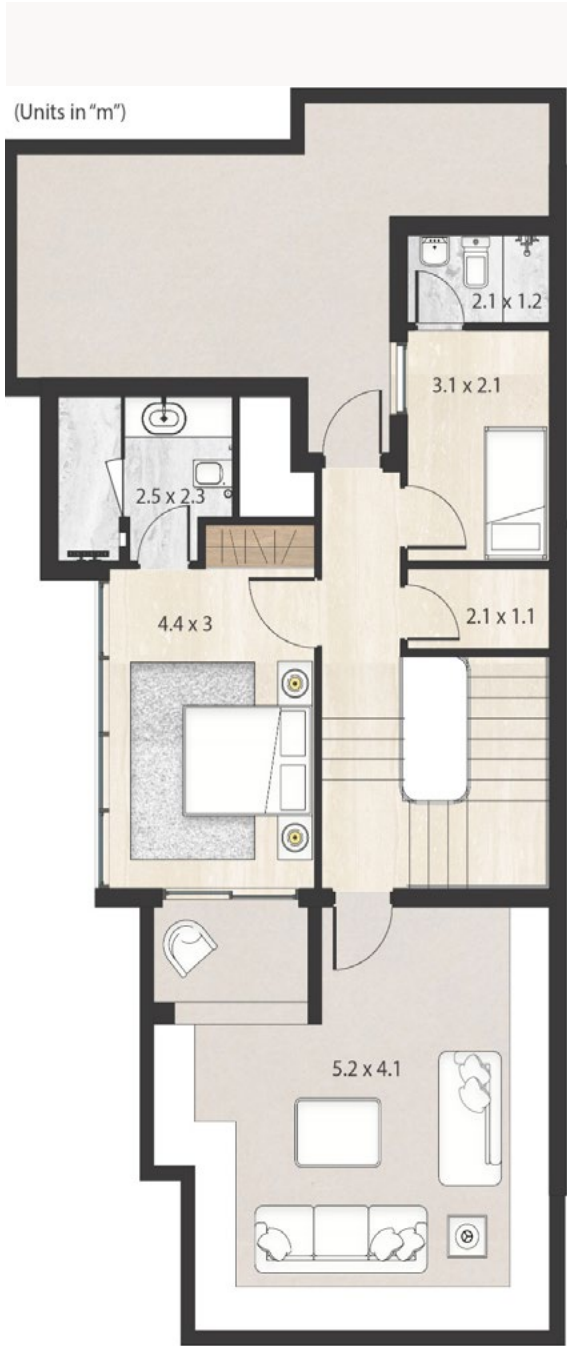
GROUND FLOOR

(Units in "m")



FIRST FLOOR

(Units in "m")

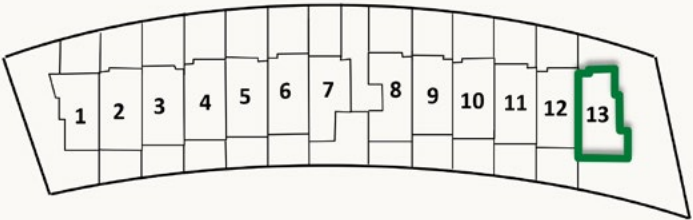


SECOND FLOOR

FLOORPLAN
4 BEDROOM TYPE A
CORNER UNIT

UNIT	INTERNAL AREA	EXTERNAL AREA	TOTAL
13	3,713	2,411	6,124

KEY PLAN



GROUND FLOOR



FIRST FLOOR



SECOND FLOOR

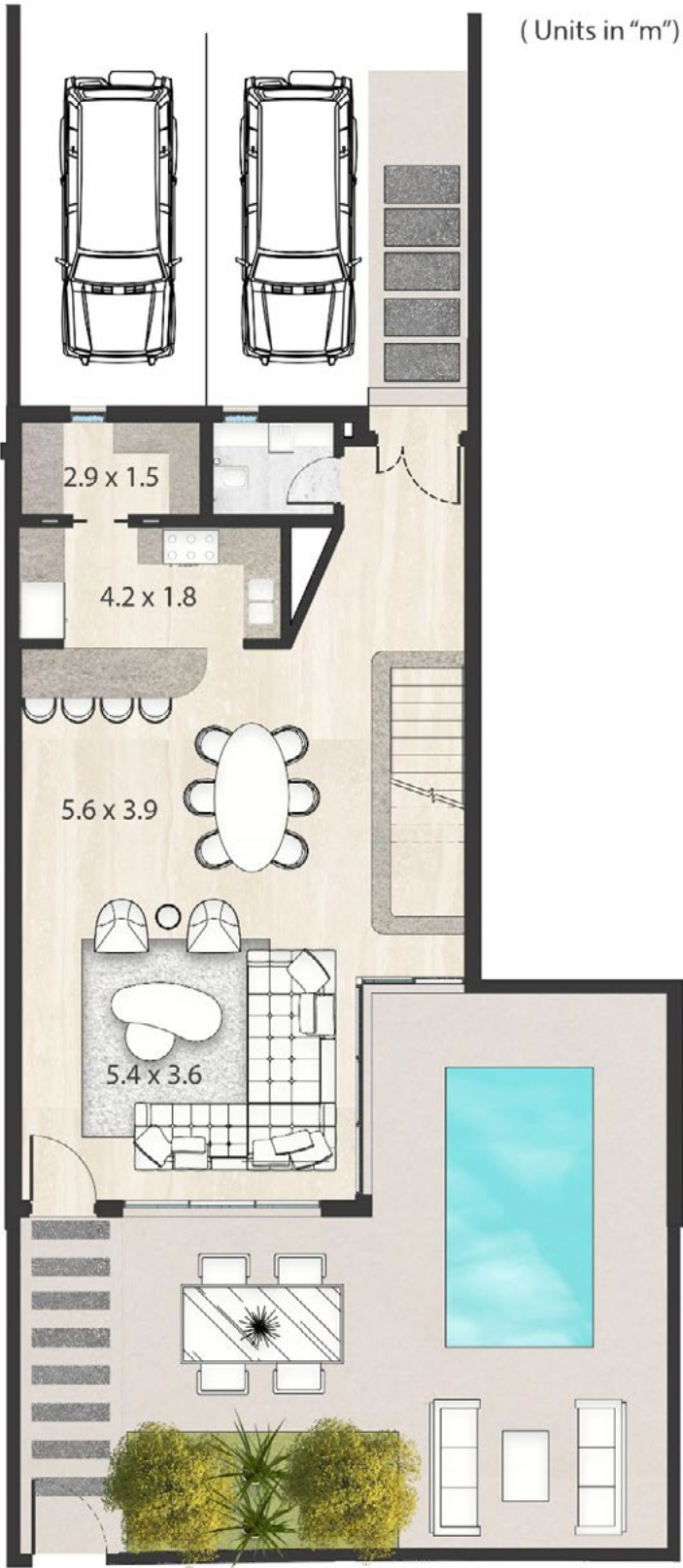
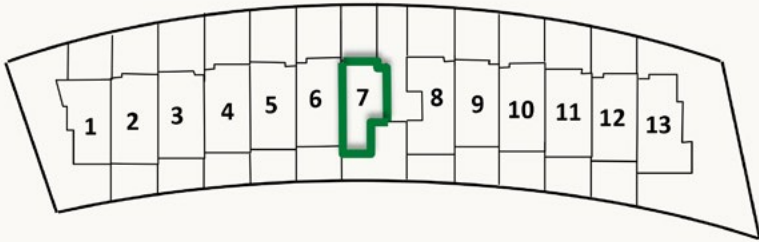
FLOORPLAN

4 BEDROOM TYPE A

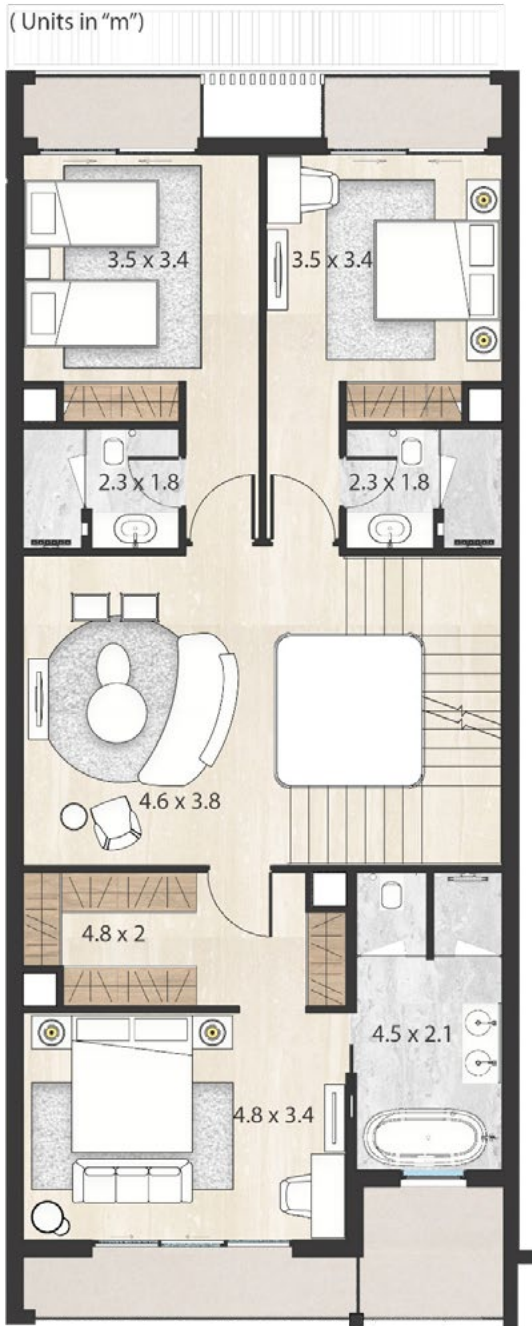
SIKKA UNIT

UNIT	INTERNAL AREA	EXTERNAL AREA	TOTAL
7	3,517	1,402	4,919

KEY PLAN



GROUND FLOOR



FIRST FLOOR

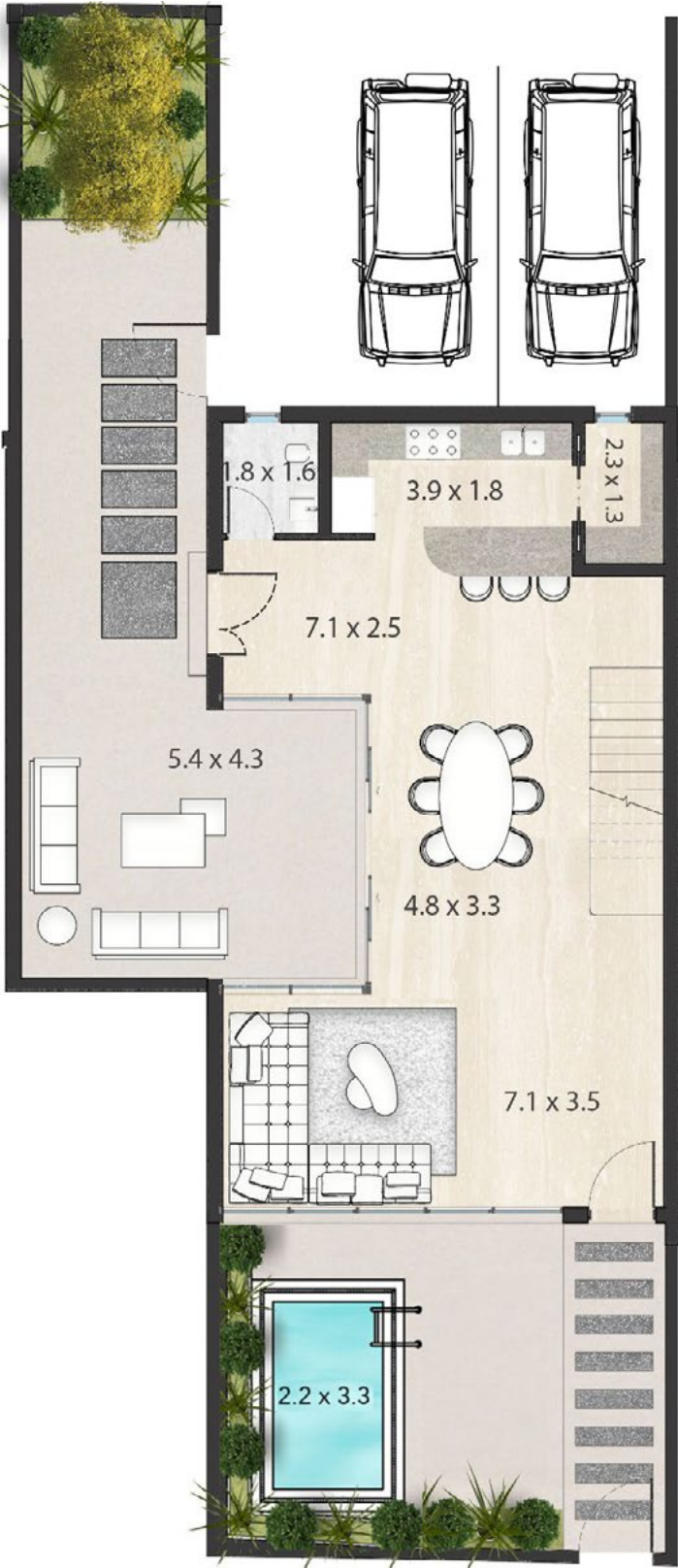
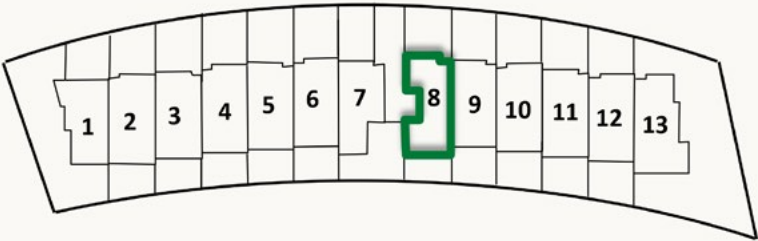


SECOND FLOOR

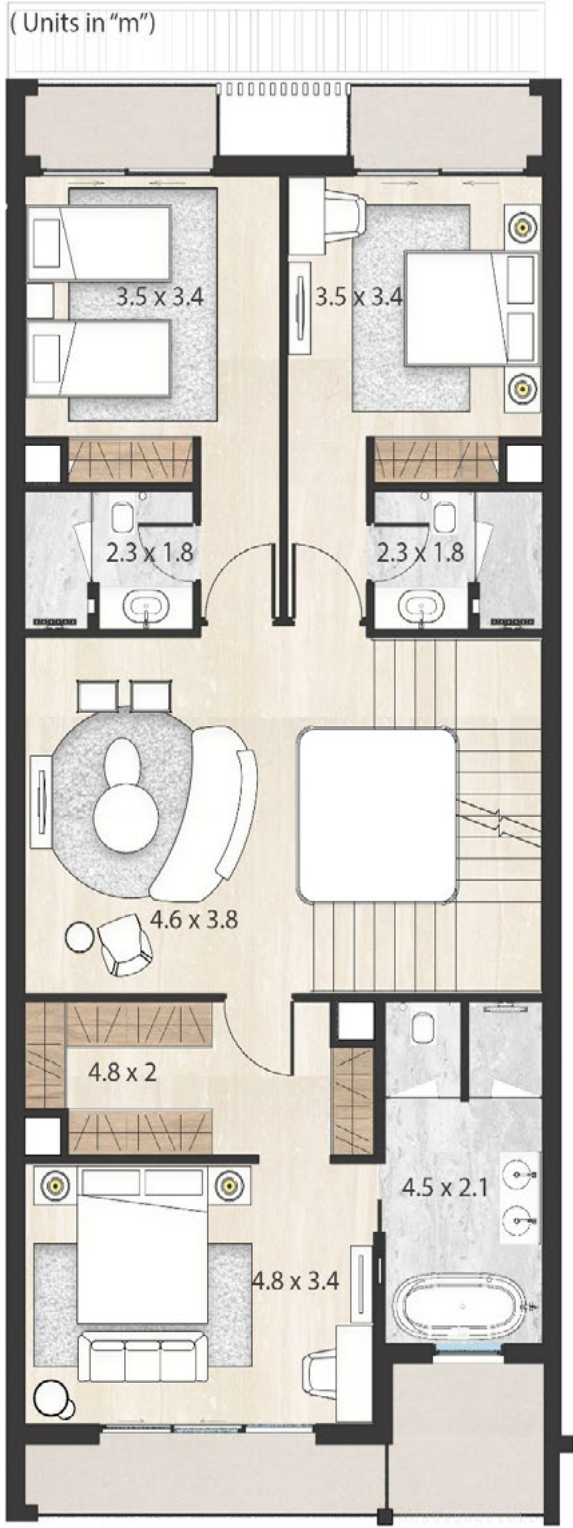
FLOORPLAN
4 BEDROOM TYPE B
SIKKA UNIT

UNIT	INTERNAL AREA	EXTERNAL AREA	TOTAL
8	3,476	1,675	5,151

KEY PLAN



GROUND FLOOR



FIRST FLOOR



SECOND FLOOR





The materials contained herein are not intended to be an offer to sell, or solicitation to buy a unit in the property. Such an offering shall only be made pursuant to the [prospectus (offering circular)] for the property and no statements should be relied upon unless made in the [prospectus] or in the applicable purchase agreement. This document is not intended to create legal relations between us and is not an offer or commitment with respect to the sale

of property and creates no obligation or liability on us to arrange or sell any property to you and all discussions relating thereto remain strictly subject to contract. In no event shall any solicitation, offer or sale of a unit in the property be made in, or to residents of, any state or country in which such activity would be unlawful.

All images and designs depicted herein are artists' conceptual renderings, which are based upon preliminary development plans, and are subject to change without any notice in the manner provided in the offering documents. All such materials are not to scale and are shown solely for illustrative purposes. All plans, features and amenities depicted herein are based upon preliminary development plans and are subject to change without notice in the manner provided in the offering documents. No guarantees or representations whatsoever are made that any plans, features, amenities or facilities will be provided or, if provided, will be of the same type, size, location or nature as depicted or described herein. Additional fees may be applicable. The brochure and renderings depict the proposed views, which are not identical from each unit. No guarantees or representations whatsoever are made that existing or future views of the project and surrounding areas depicted by artist's conceptual renderings or otherwise described herein, will be provided or, if provided, will be as depicted or described herein. Any view from a unit of from other portions of the property may in the future be limited or eliminated by future development or forces of nature and the developer in no manner guarantees the continuing existence of any view. The sketches, renderings, graphics materials, plans, specifications, amenities, terms, conditions and statements contained in this brochure are proposed only,

and the Developer reserves the right to modify, revise or withdraw any or all of the same in its sole discretion and without prior notice. The Developer does not undertake to update, correct or otherwise revise this document and the information contained herein at any time.

All improvements, designs and construction are subject to first obtaining the appropriate permits and approvals from the relevant authorities for same. The drawings and depictions contained herein are conceptual only and are for the convenience of reference.

They should not be relied upon as representations and/or warranties, express or implied, of the final detail of the residences. Any proposed terms in this document are indicative only and the Developer expressly reserved the right to make modifications, revisions and changes it deemed desirable in its sole and absolute discretion. Any buyer/lessee must satisfy themselves by inspection or otherwise as to the correctness of any information given. The photographs contained in this brochure may be stock photography or have been taken off-site and are used to depict the spirit of the lifestyle to be achieved rather than any that may exist or that may be proposed, and are merely intended as illustration of the activities and concepts depicted therein.