



DEVELOPERS

ADDRESS YOUR STYLE

Our home – Dubai!

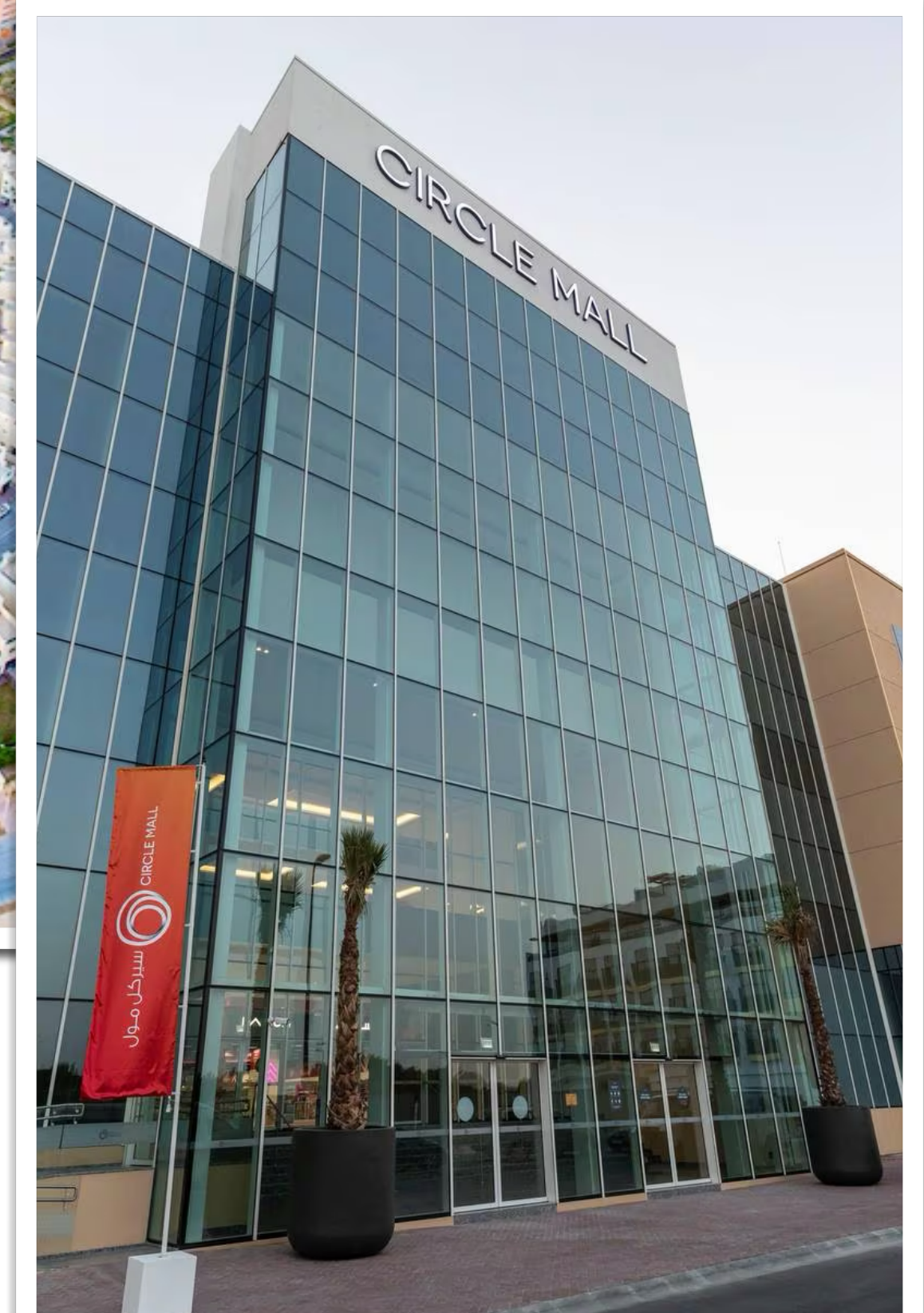
Dubai is not only where the world dreams to live, but it also offers exclusive benefits rarely found anywhere else, a few of these are:

- High rental returns.
- Zero property taxes.
- Investor residency visa.
- Highly regulated market.
- Cryptocurrency accepted.



Jumeirah Village Circle

Jumeirah Village Circle (JVC) has grown to become a fully integrated neighborhood, it offers a community mall, parks, hotels, shops, restaurants & cafes, mosques, schools and nurseries, and much more. All what you need for a modern living.



AYS Developers

A leading property developer in Dubai, aspiring to develop astonishing and long-lasting properties, by offering prime locations, elegant designs, top quality materials, world-class amenities, and amazing value for money by keeping the prices competitive.



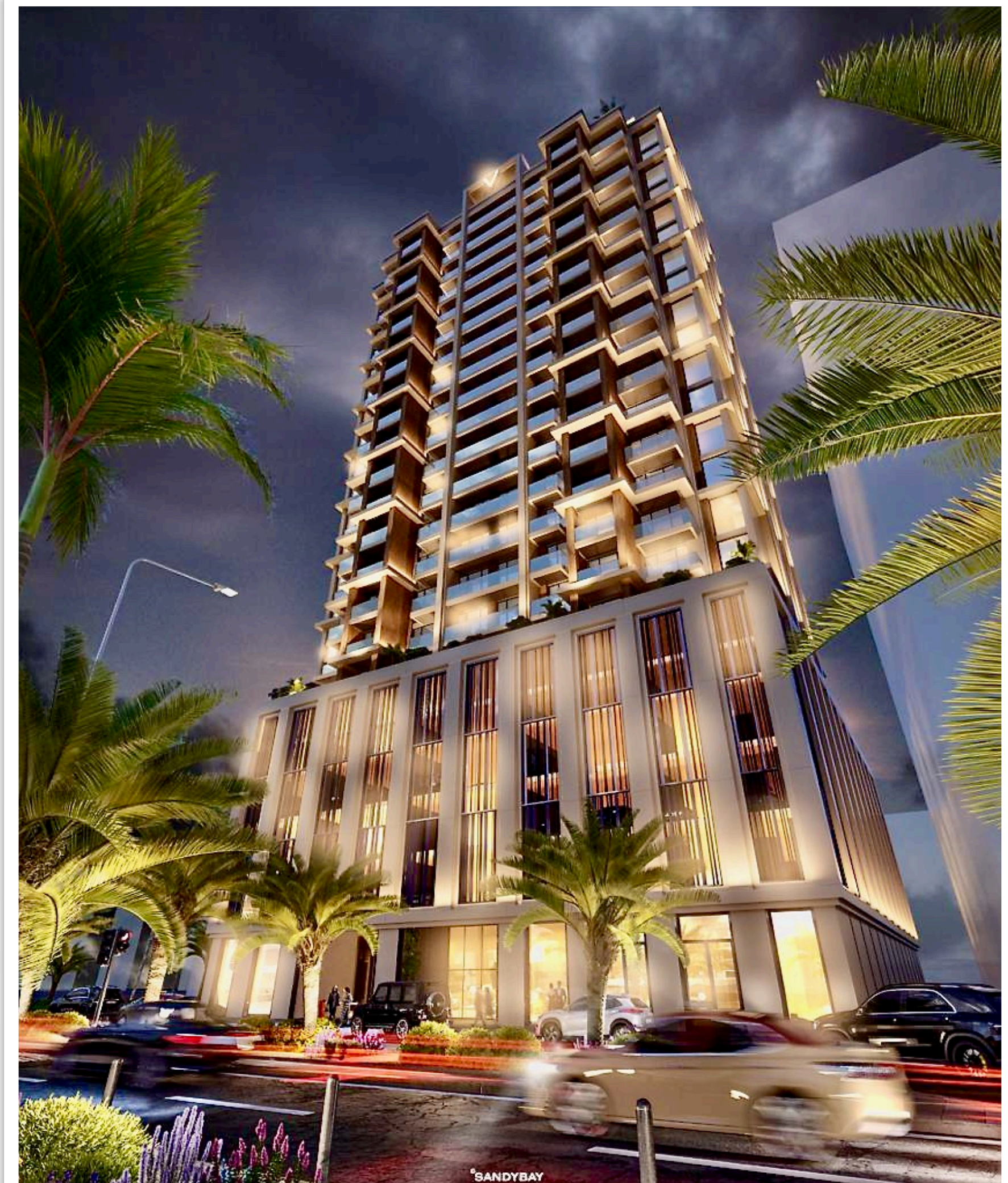


Q GARDENS - LOFTS 2

Jumeirah Village Circle

LOFTS 2

The new residential masterpiece stands as a testament to luxury and sophistication. Its elegant design, characterized by sleek lines and modern aesthetics, captivates the eye and sets a new standard for architectural excellence. Crafted with top-quality materials, the building not only exudes opulence but also promises durability and longevity.



Prime Location.

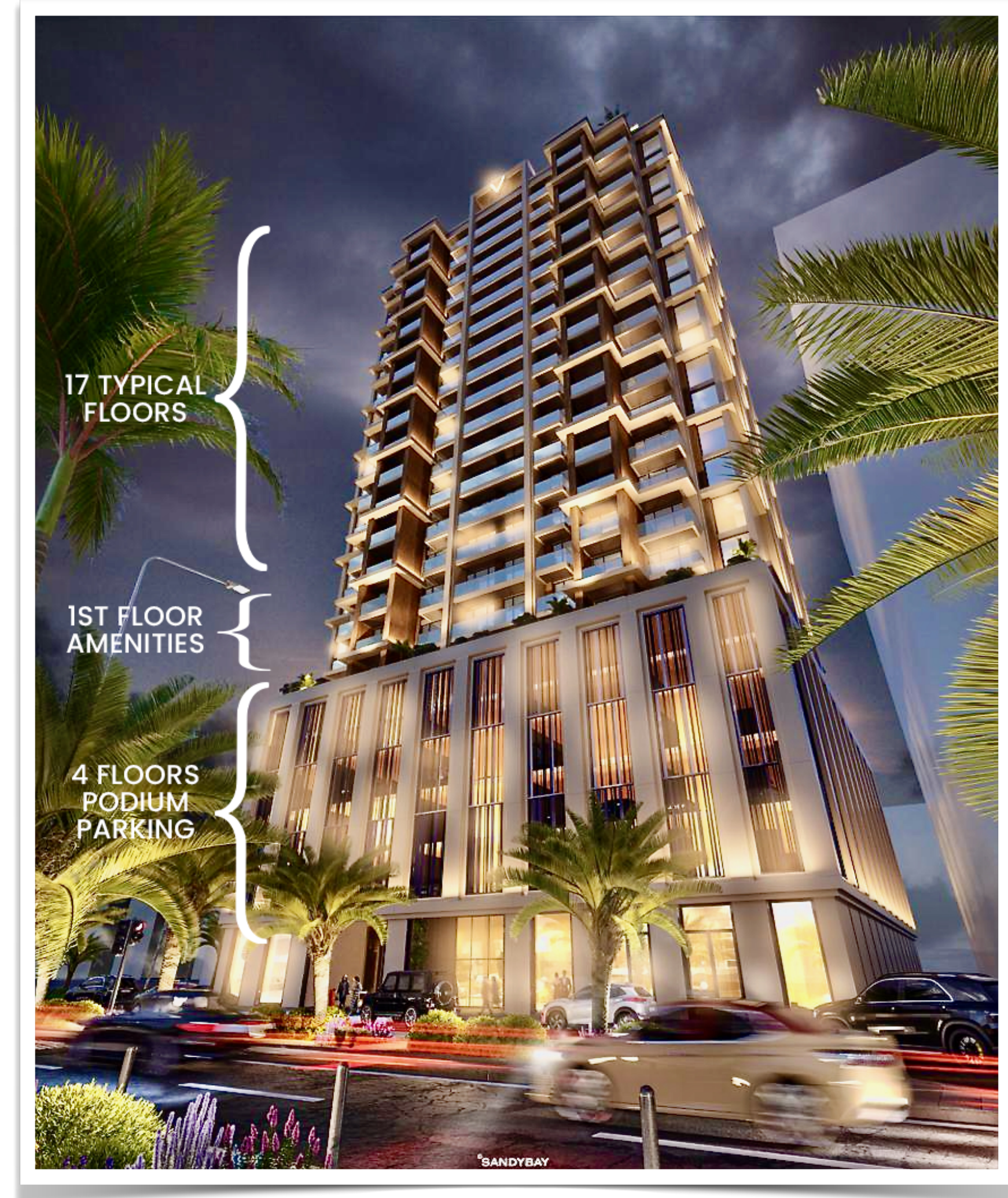
The project is strategically situated in a prime location that offers unparalleled accessibility to all vital destinations within the city. Nestled in close proximity to key landmarks and important facilities, this location ensures a seamless and convenient lifestyle for residents.



Configuration.

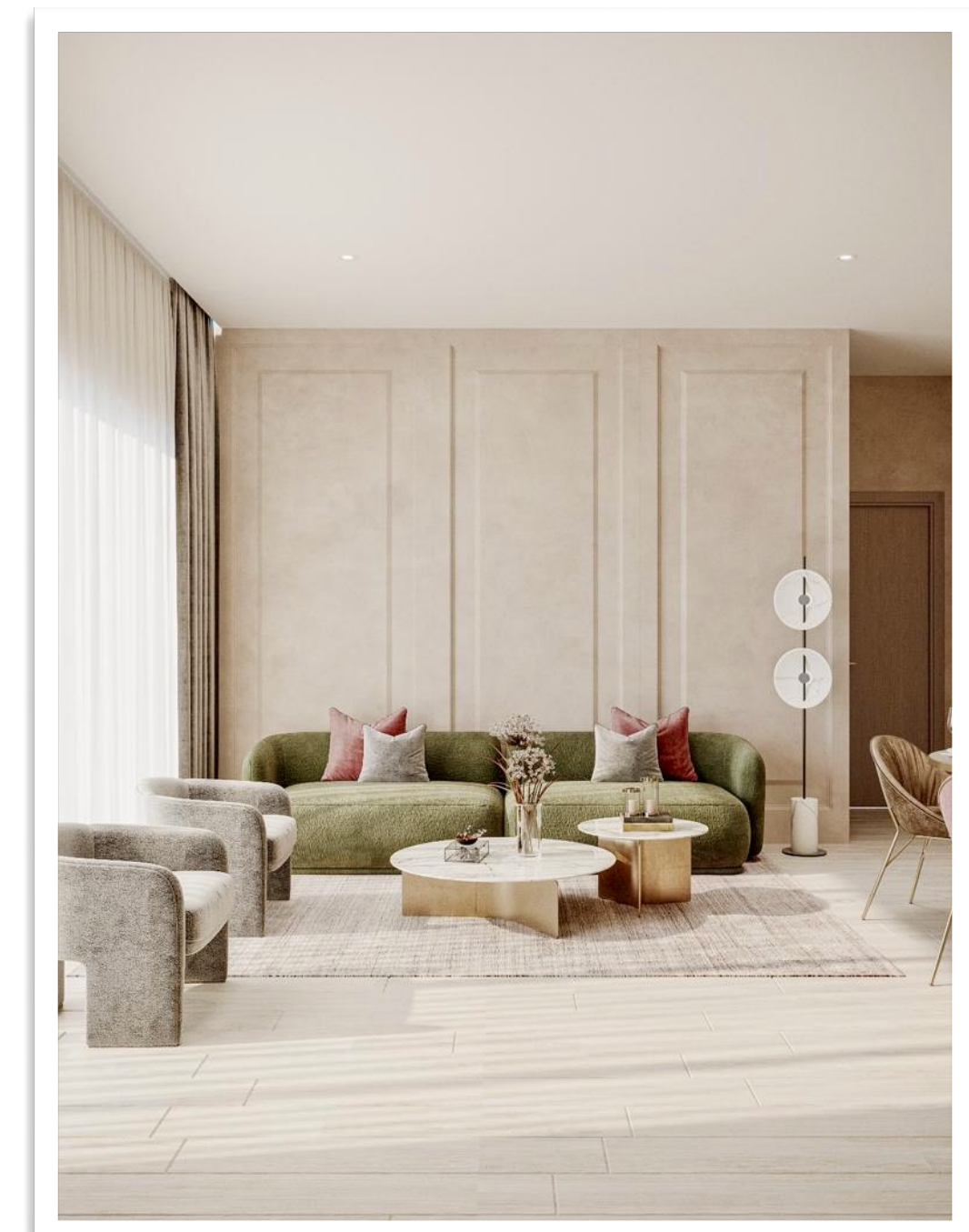
The building consists of:

- Grand lobby in the ground floor.
- 4 levels of podium parking.
- Amenities on the first floor.
- 2nd to 17th typical floors.



Timeless Design.

The exquisite design of this project is a testament to the unparalleled artistry of the renowned designer Aleena Waqas. With a visionary approach, Waqas has seamlessly blended modern aesthetics with timeless elegance, creating a residential masterpiece that transcends contemporary expectations.



Ever-lasting Quality.

The apartments within this residential gem boast an unparalleled level of refinement, owing to the meticulous selection of top-quality materials and appliances from distinguished European brands. The interiors are adorned with an opulent palette of materials, including imported marble, rich hardwoods, and polished metals, sourced to embody both durability and aesthetic splendor.

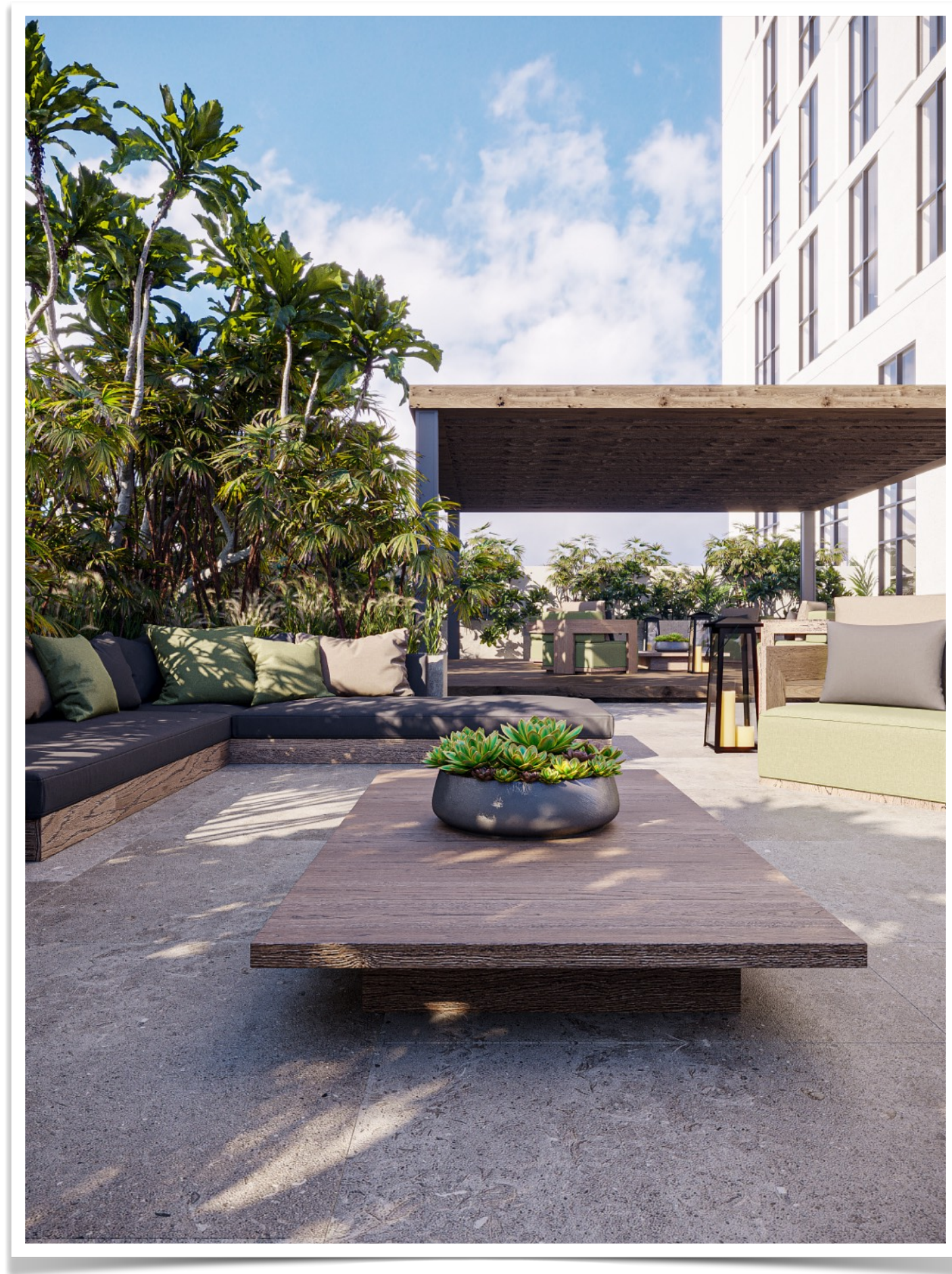
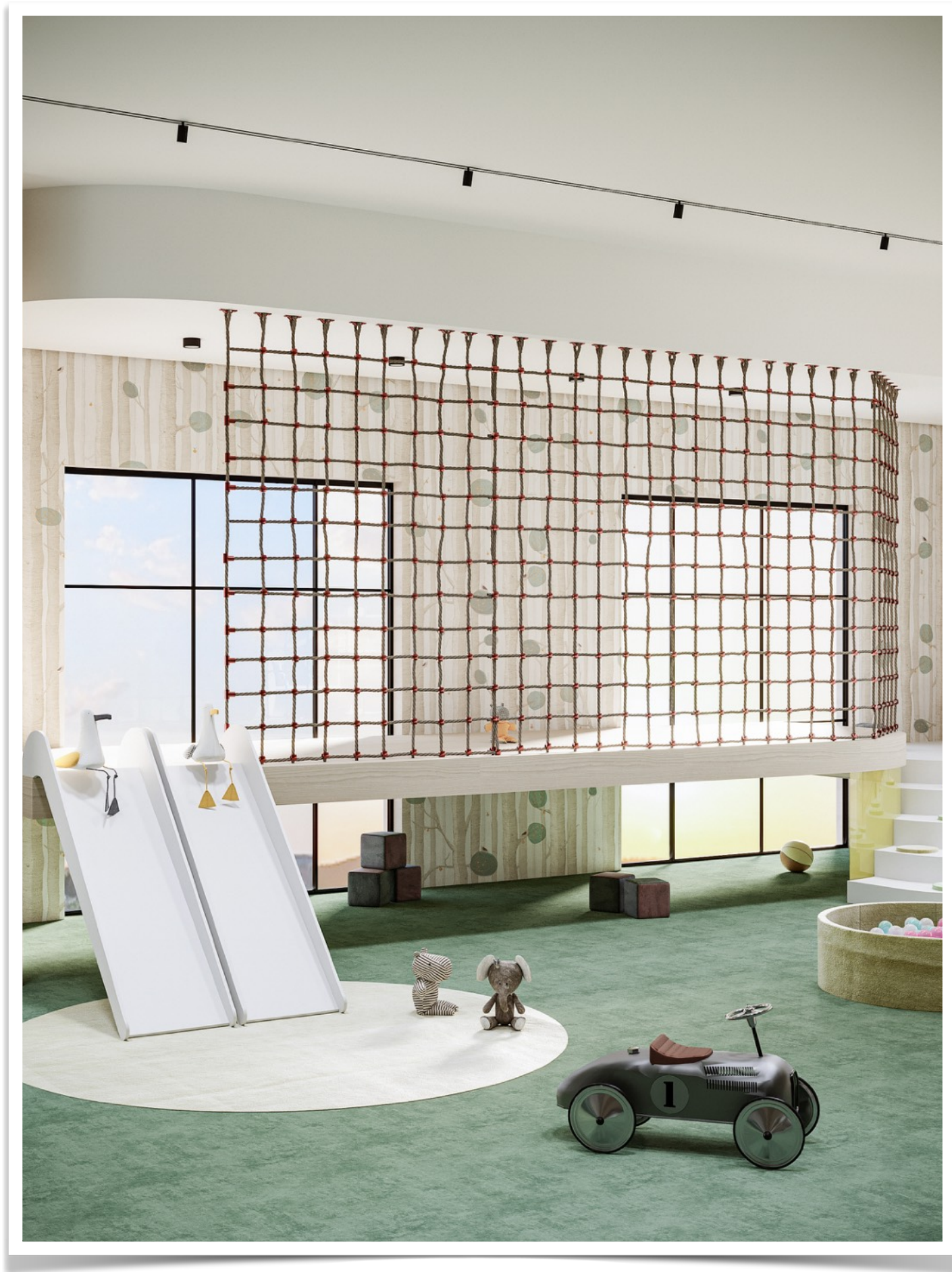




World-class Amenities.

Residents are welcomed into a realm of unparalleled comfort and convenience, with an array of amazing amenities that redefine urban living. From a podium oasis with panoramic city views to state-of-the-art fitness facilities, every detail is thoughtfully curated to elevate the resident experience to new heights.

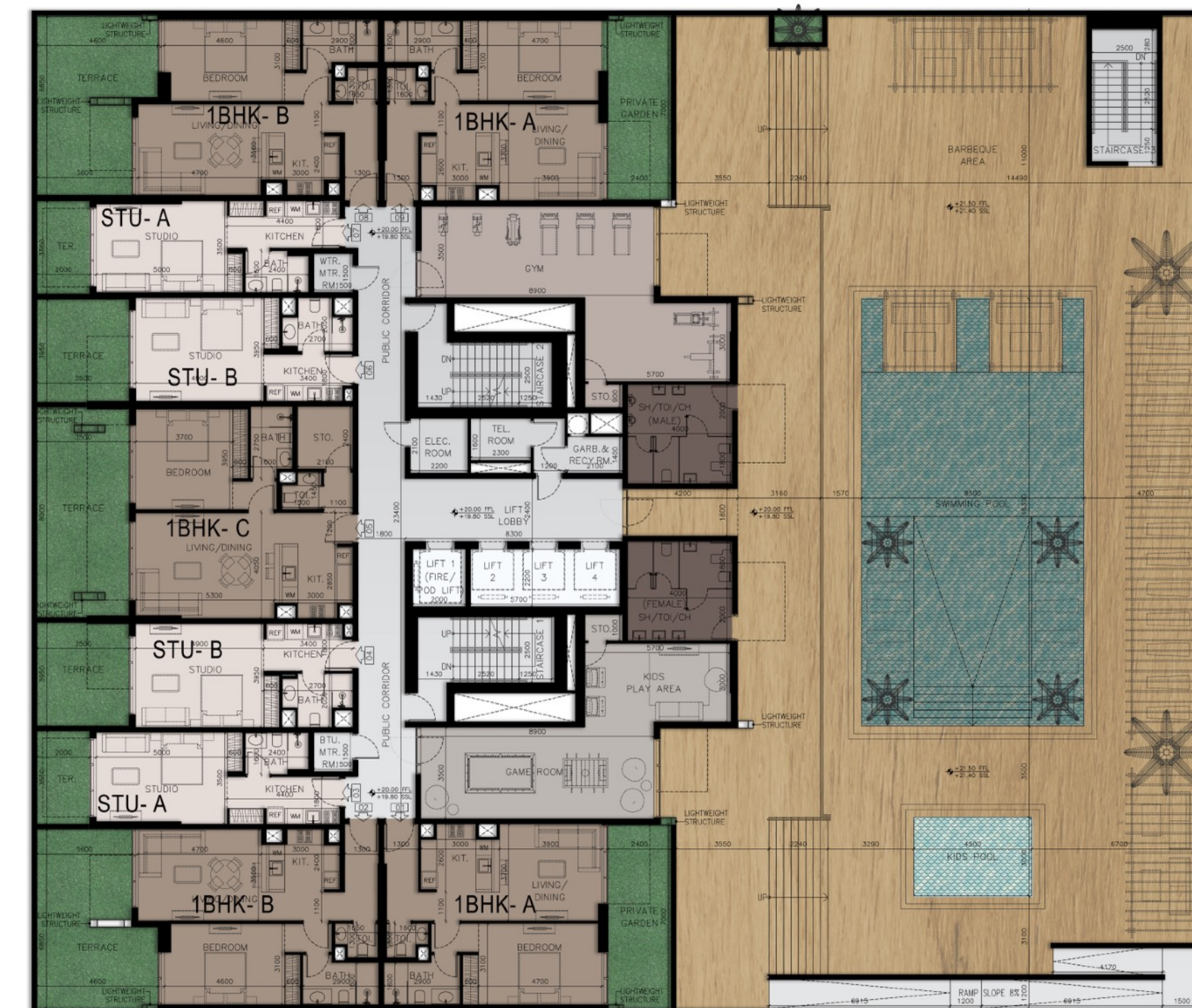




Unit types:

The building consists of:

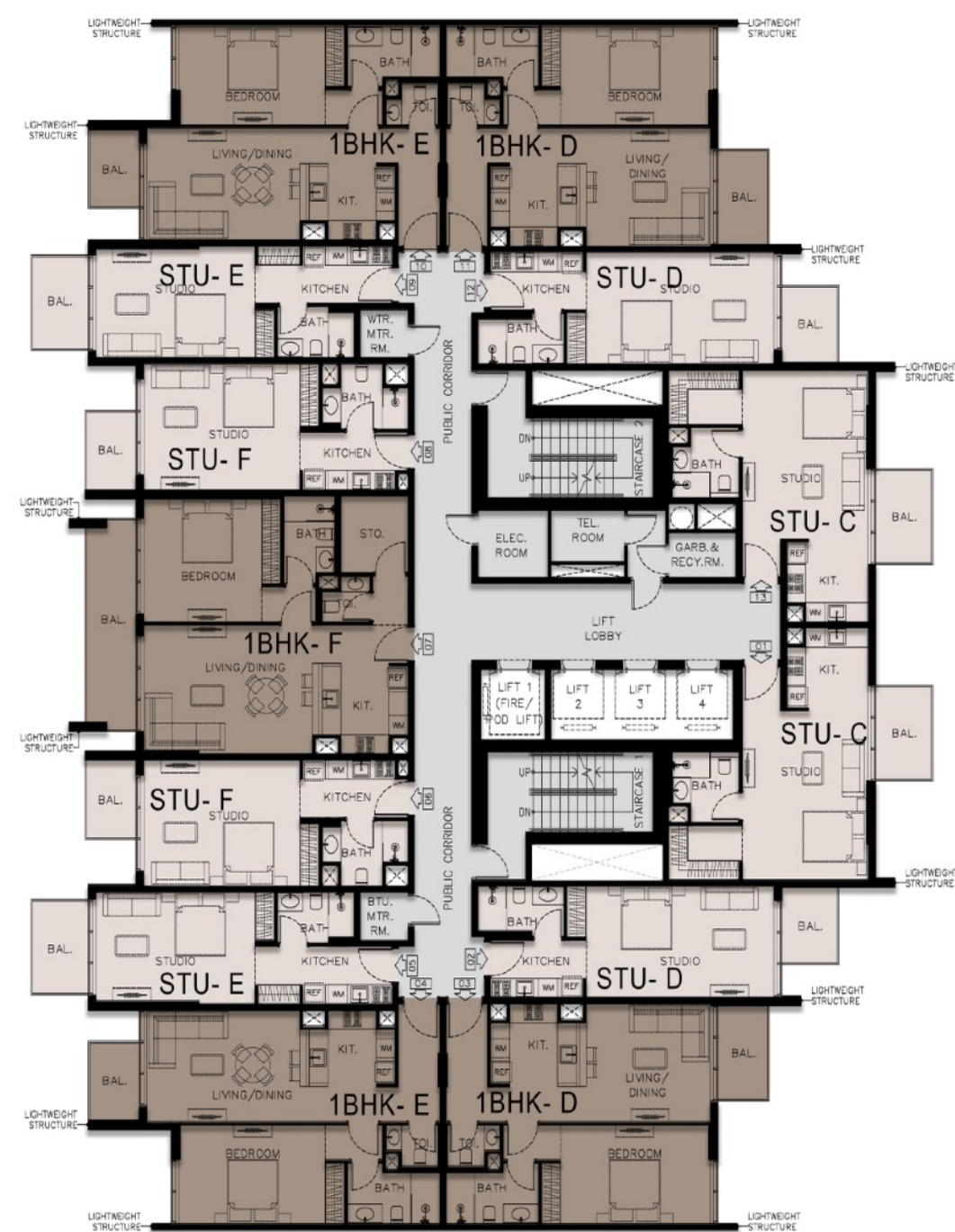
- Studios.
- 1 bedrooms.
- 2 bedrooms.
- 1st floor is unique in its configuration.
- 2nd to 17th floors are typical.
- 18th floor is unique in its configuration.



FIRST FLOOR

APARTMENT UNITS: 9

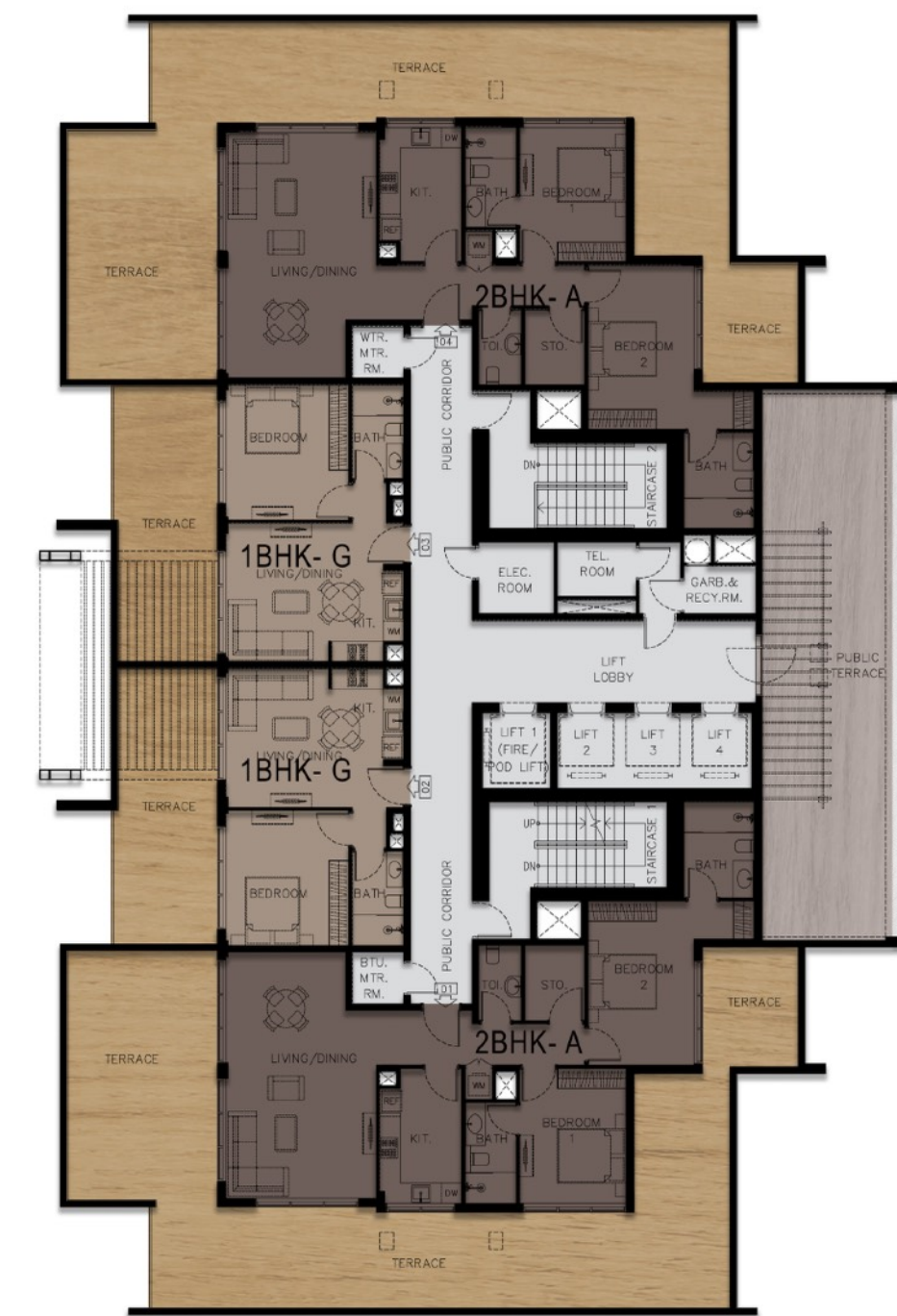
9



TYPICAL 2ND TO 17TH FLOOR

APARTMENT UNITS: 13

13



18TH FLOOR

APARTMENT UNITS: 4

4