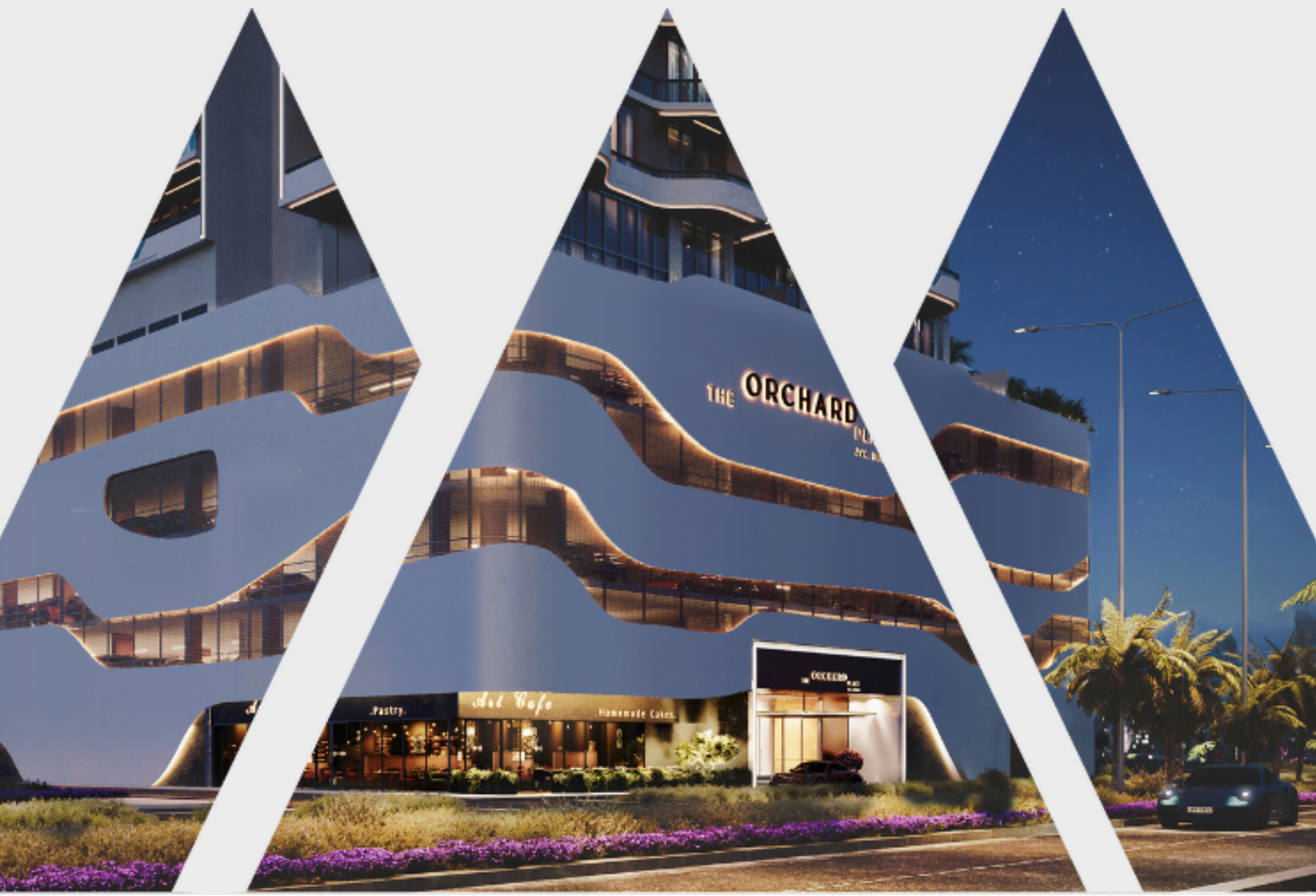




M&M REAL ESTATE

# THE ORCHARD PLACE



 Peak Summit Developments

# THE ORCHARD PLACE

JUMEIRAH VILLAGE CIRCLE

---

Step into the new essence of living

## INVESTMENT HIGHLIGHTS

- Mesmerizing views of the city
- Luxurious amenities
- State-of-the-art designs
- Prime location

## KEY DETAILS

- Property types - apartments, penthouses, penthouse duplexes, lofts and duplexes
- Unit types - studio, 1, 2 and 3 bedrooms
- Sizes from - 520 sq.ft.
- Completion date - Q3 2026
- Starting price - from AED 699,378 | GBP 157,584







## OVERVIEW:

# THE ORCHARD PLACE

---

The Orchard Place above all is an idea – create a convenient, relaxed place in the heart of the crowded city to live your life to the fullest, without distractions. Surrounded by three delightful gardens and set in greenery The Orchard Place offers a unique living environment. The development was carefully crafted to cater to the pickiest residents. Every aspect of the development serves one purpose – to deliver maximum comfort to the residents.

The architecture invites you to move in and explore the new, ultimate way of living – a modern, sophisticated and vibrant lifestyle. The comprehensive community embodies the concept of comfortable living, with essential amenities close by and a world of retail, leisure and entertainment on the doorstep. It is the ultimate address for a perfectly balanced lifestyle. Whether it's spending quality time with family, connecting with nature, or taking stunning views on a leisurely stroll, this idyllic neighbourhood is the ideal place to savor life's beautiful moments.

## FACILITIES

- Paddle tennis, basketball and football facilities
- Gym
- Steam rooms
- Yoga terrace
- Gym

## PAYMENT PLAN

- 10% on booking
- 10% + 4% Oqood and registration fee - On signing SPA
- 4% in 11 instalments
- 40% on completion



# LOCATION:

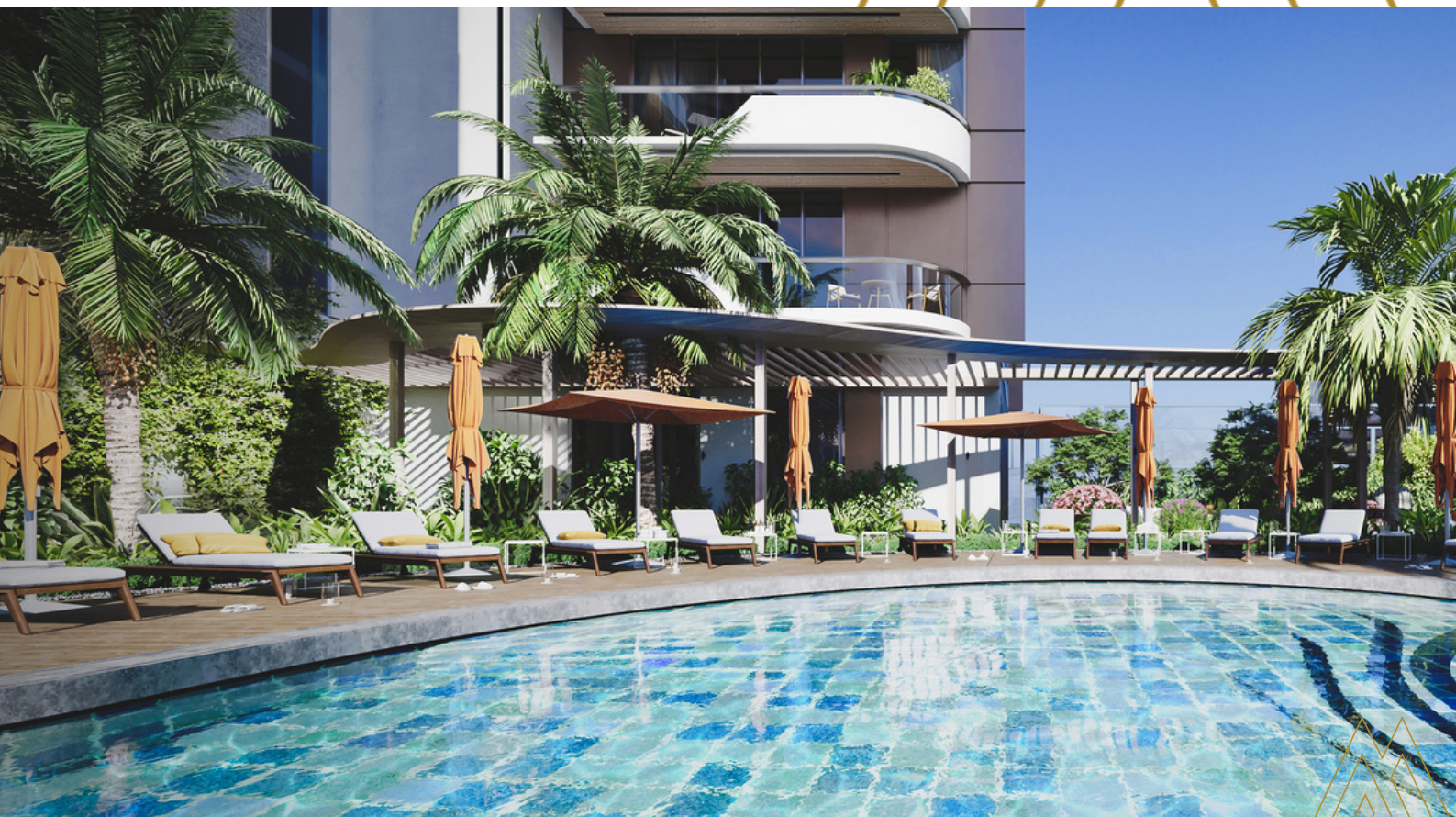
## JUMEIRAH VILLAGE CIRCLE

---

The neighbourhood presents one of the main advantages that offer convenience and comfort to the residents. The proximity of educational institutions, parks, entertainment, and shopping presents an opportunity to enjoy everyday ease and comfort.

From three sides surrounded by the Gardens of Jumeirah Village Circle, The Orchard Place offers a unique atmosphere for living. The green environment along with the convenient location makes The Orchard Place one of the most demandable developments to live in.

- 6 minutes to JVC Circle Mall
- 12 minutes to Dubai Hills Mall
- 18 minutes to Palm Jumeirah
- 20 minutes to Dubai Marina
- 25 minutes to Dubai International Airport













# INVESTING IN THE ORCHARD PLACE

---



## Step 1

### Initial consultation

Once you've notified us of your interest in the project, we'll arrange a convenient time to speak further about your investment goals and ensure this project is the right choice for you.



## Step 2

### Find the best property

We'll assist you in identifying the right property within the project, that aligns with your investment objectives and budget. Once we've selected a property, we will communicate with the developer on your behalf.



## Step 3

### Developer communication

We'll handle the process directly with the developer from start to finish, offering help and advice to assist you with decisions along the way. We'll take care of all the paperwork and make your experience as straightforward as possible.



## Step 4

### Legal paperwork and management

We'll also be on hand to assist you through every stage of the purchasing process, including transfer of ownership at the Dubai Land Department, assisting with relevant visa applications and even arranging management of your new property.



# GET IN TOUCH

---



## Dubai, United Arab Emirates

✉ [invest@mandmrealestate.ae](mailto:invest@mandmrealestate.ae)

☎ +971 4 588 5288

🌐 [mandmrealestate.ae](http://mandmrealestate.ae)

📍 A1606, The Opus by Omniyat  
Business Bay  
Dubai, United Arab Emirates

## London, United Kingdom

✉ [invest@mandmrealestate.co.uk](mailto:invest@mandmrealestate.co.uk)

☎ +44 20 4583 3380

🌐 [mandmrealestate.co.uk](http://mandmrealestate.co.uk)

📍 7th Floor, City Reach  
Canary Wharf  
London, United Kingdom

