



THE **ORCHARD** PLACE



# STEP INTO THE NEW ESSENCE OF LIVING

Designed for life



# Feel the heartbeat of Dubai





# Surrounding and Context

*Comfort and convenience - these are the core stones of The Orchard Place*

Comfort and convenience - these are the core stones of **The Orchard Place** development that starts from its location. The surrounding context and neighborhood provide comfort and convenience for the residents with the proximity of all necessary facilities and destinations.



— 18 MINUTES

THE PALM JUMEIRAH

— 20 MINUTES

DUBAI MARINA

— 20 MINUTES

JBR

— 25 MINUTES

DUBAI INTERNATIONAL AIRPORT

— 30 MINUTES

AL MAKTOUM INTERNATIONAL AIRPORT

— 12 MINUTES

DUBAI HILLS MALL

— 20 MINUTES

MALL OF THE EMIRATES

— 25 MINUTES

DOWN TOWN

— 25 MINUTES

DIFC



# Find all you need in your Neighborhood

The neighborhood presents one of the main advantages that offer **convenience and comfort** to the residents. The proximity of educational institutions, parks, entertainment, and shopping presents an opportunity to enjoy everyday ease and comfort.

Circle Mall  
Jumeirah Village Circle  
6 MINUTES

School District Dubai  
BRIGHTON COLLEGE  
BLOOM WORLD ACADEMY  
GEMS AL BARSHA  
GEMS FOUNDERS  
DUBAI HEIGHTS ACADEMY  
14 MINUTES

AL KHAIL ROAD

THE ORCHARD PLACE

SHEIKH MOHAMMED BIN ZAYED ROAD

Kids World Nursery  
Jumeirah Village Circle  
4 MINUTES

Sport City  
11 MINUTES

Dubai Autodrome  
15 MINUTES

# Set in Greenery

From three sides surrounded by the Gardens of Jumeirah Village Circle, The Orchard Place offers a unique atmosphere for living. The green environment along with the convenient location makes **The Orchard Place** one of the most demandabe developments to live in.

Public Garden

Circle  
Community park

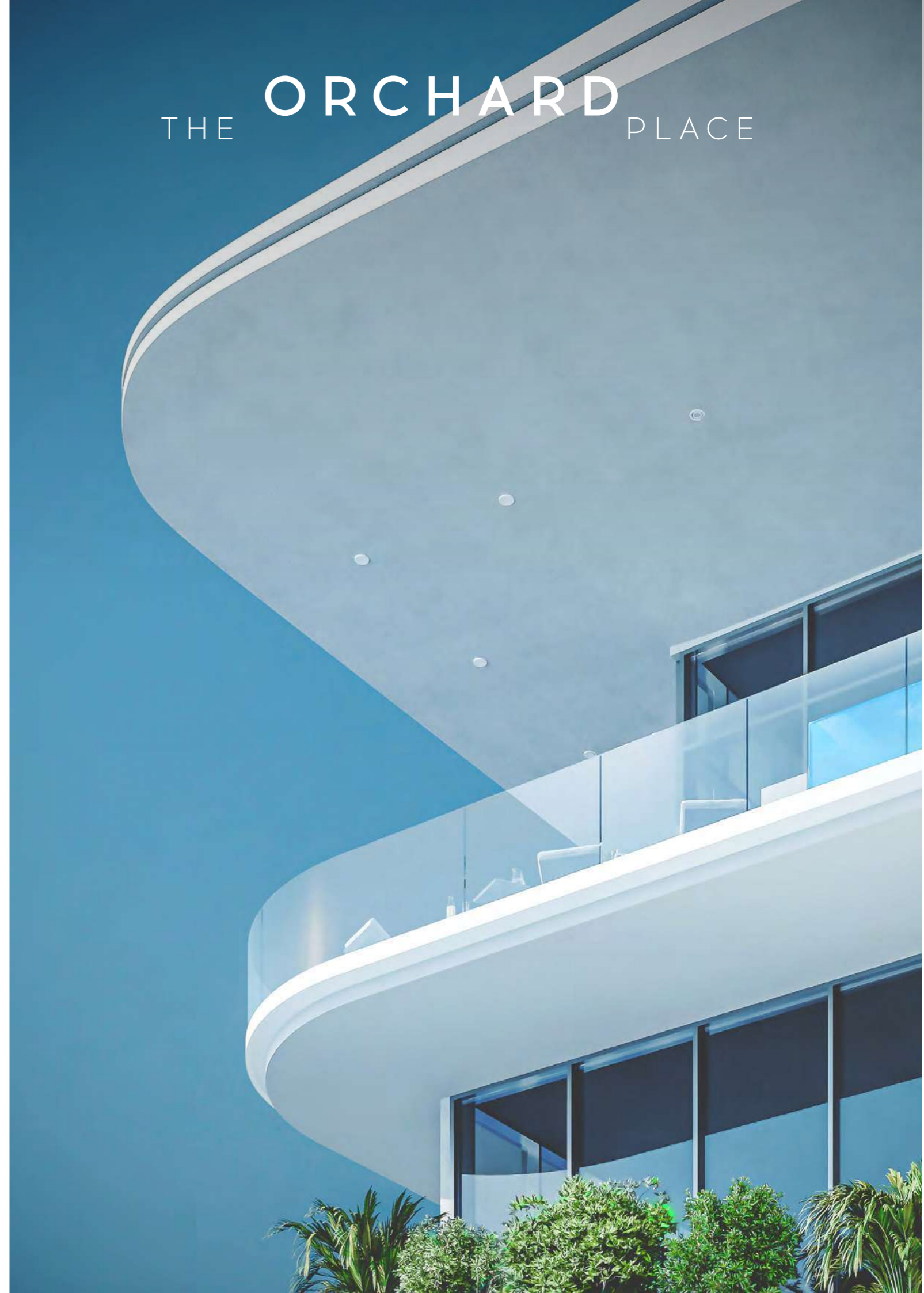
Jumeirah Village Circle  
District 12 Park

THE ORCHARD PLACE

# The cozy place to live in the middle of the park

*Surrounded by three gardens*

From three sides surrounded by the Gardens of Jumeirah Village Circle, **The Orchard Place** offers a unique atmosphere for living. When everyday problems get out of your way, life becomes more exciting and enjoyable. With this notion, we have created a skyscraper that fully complies with New York standards.





# THE ORCHARD PLACE

## DESIGNER APPROACH

### *Designed for life*

**The Orchard Place** above all is an idea – create a convenient, relaxed place in the heart of the crowded city to live your life to the fullest, without distractions. Surrounded by three delightful gardens and set in greenery **The Orchard Place** offers a unique living environment. The development was carefully crafted to cater to the pickiest residents. Every aspect of the development serves one purpose – to deliver maximum comfort to the residents.



# The cityscape

## *Embrace the best views*

While all of the residences take full advantage of the views, with spacious balconies and ample sunlight, the penthouses offer serene terraces, with swimming pools and mesmerizing views of the city.

An architectural rendering of a modern high-rise building complex at night. The building features glass facades and balconies, illuminated from within. The sky is dark with visible stars. In the foreground, there are palm trees, a road with a car, and some landscaping.

# THE ORCHARD PLACE

## ULTIMATE WAY OF LIVING

*Modern and comfortable*

The architecture invites you to move in and explore the new, ultimate way of living – a modern, sophisticated and vibrant lifestyle. The comprehensive community embodies the concept of comfortable living, with essential amenities close by and a world of retail, leisure and entertainment on the doorstep. It is the ultimate address for a perfectly balanced lifestyle. Whether it's spending quality time with family, connecting with nature, or taking stunning views on a leisurely stroll, this idyllic neighborhood is the ideal place to savor life's beautiful moments.

## Tower A

- G + 4P + 23 stories
- Penthouse level with private pools on the terraces
- Commercial space
- Lobby space

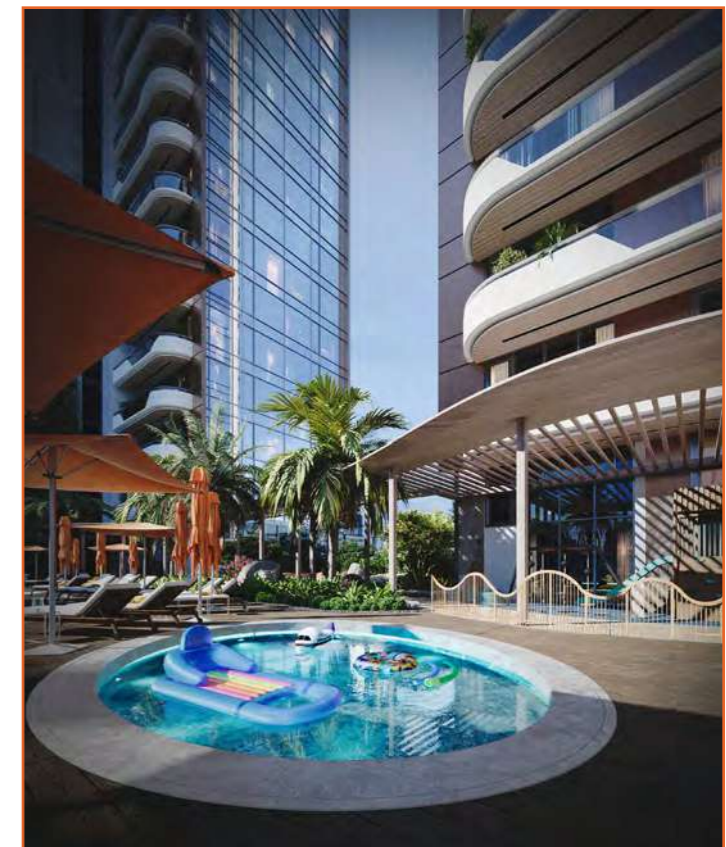
## Tower B

- G + 4P + 30 stories
- Penthouse level with private pools on the terraces
- Commercial space
- Lobby space

# Amenities within the project

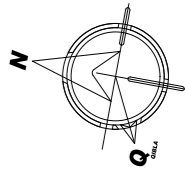
### *Context and Neighborhood*

- Four podiums with 543 parking lots
- Gym with terrace for Yoga/stretching.
- Four Steam rooms
- Separate lockers and showers
- Adult pool and kids pool
- Two separated BBQ area
- Landscape and seating area
- Kid's zone (outdoor and Indoor)
- Common area for business meetings and events
- Paddle tennis



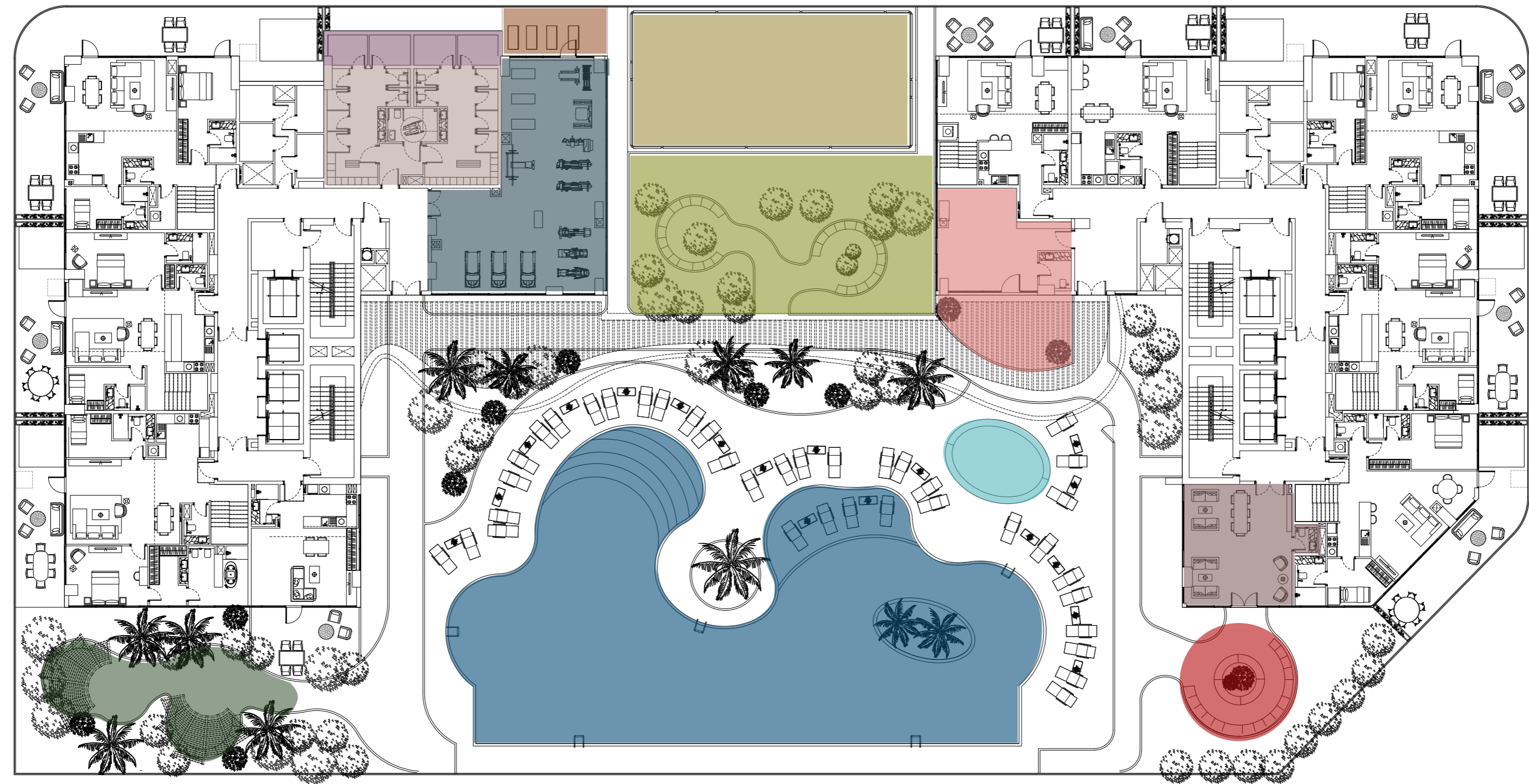
# All the facilities for your comfort

## Podium level



Tower A

Tower B



- |                     |              |                         |                          |               |              |
|---------------------|--------------|-------------------------|--------------------------|---------------|--------------|
| GYM                 | Sitting area | Kid's area / Playground | Infinity Pool            | Kid's Pool    | Steam Room   |
| Paddle tennis court | BBQ zone     | Communal area           | Park area with fireplace | Changing room | Yoga Terrace |



# Designed for Leisure and Relaxation

## *Adult and Kids pool*

The spacious 25m infinity swimming pool with an island in the middle is designed to offer **ultimate comfort** to you for **leisure** and **relaxation**. With plenty of sunbeds, including sunken ones **The Orchard Place** guarantees that your quality time is best spent outdoors. The Kids pool with all the necessary amenities is comfortably placed near the Kids area, so you and your kids **spend your free time in the best way possible**.



# Amenities designed for your comfort

*Two separated BBQ areas*

Enjoy the two, fully equipped barbecue areas that are privately located in the corner of the plot and designed to provide a lightweight, yet **cozy ambiance**. Use our app to book desired area for your convenient time and **enjoy outdoor living** with your friends and family.

# Gardens and Terraces with Fireplace

*RE-Connect with Nature*



Enjoy your everyday in the well-planned landscape with greenery, open gardens and more intimate, private zones for you and your beloved ones. Various original sitting arrangements are designed to make your time spent on the fresh air more enjoyable and comfortable, while the areas are planned to provide green walking spaces!

THE ORCHARD PLACE



# Active & socialized *Paddle Tennis*

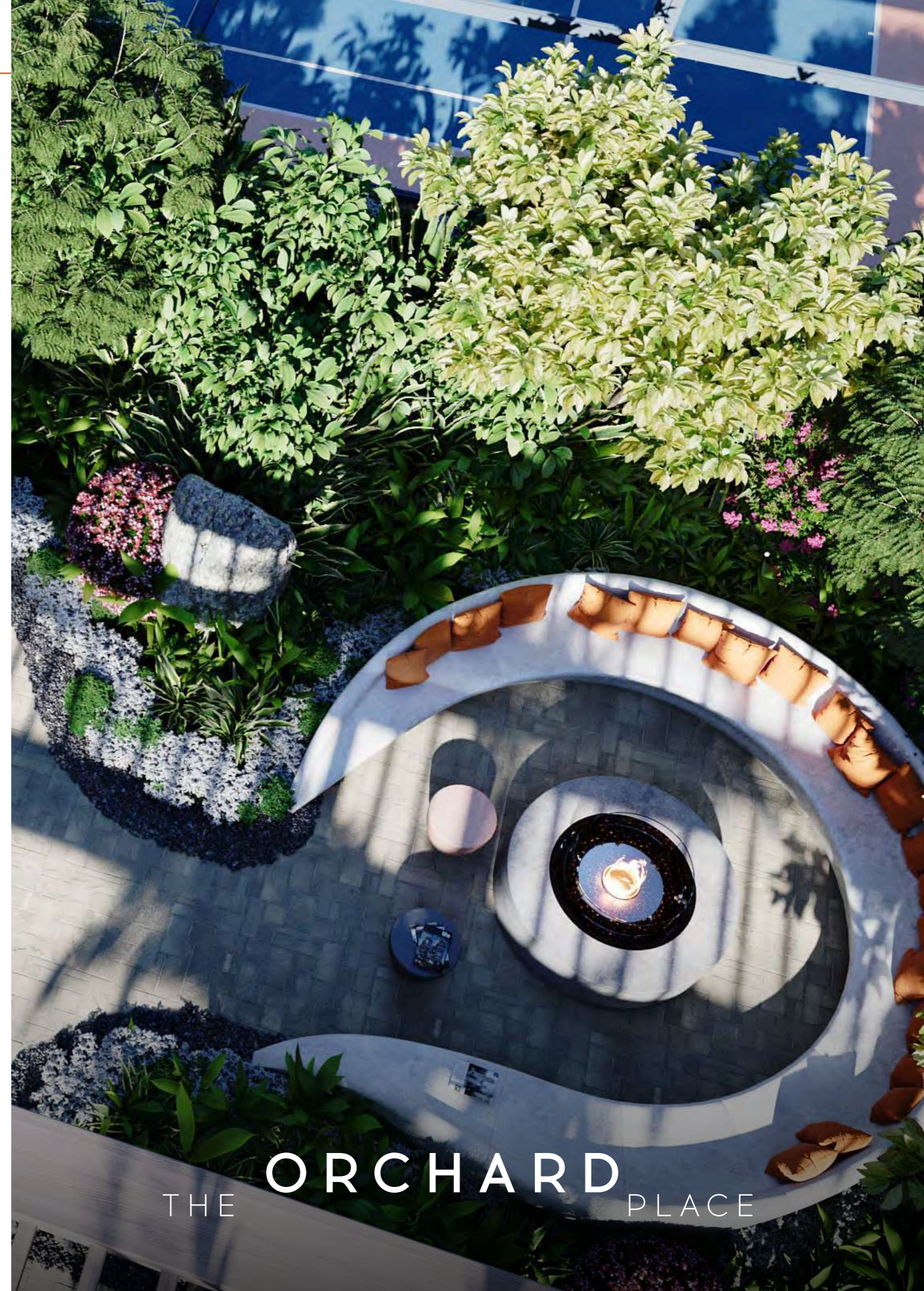
Book the paddle tennis court via our app to **enjoy your favorite activity** or try something new with friends. The court is located near gym and changing rooms for maximum **ease and comfort**, while the **green surrounding** makes playing even more enjoyable.

# Comfortable Day & Night

*Spend your free time outdoors*



The landscape was carefully planned to create areas that you would enjoy day and night, with selected plants, sitting arrangements and ambient lighting. We have envisioned an outdoor area for the evening kids' cinema so that your children can enjoy their evenings while you relax in a well-planned and pleasantly lit landscape.



THE ORCHARD PLACE



# Indoor & Outdoor Living

*Immediate sense of belonging*

The indoor and outdoor spaces harmoniously transform into one another, with all functions and amenities allocated in the most comfortable manner.

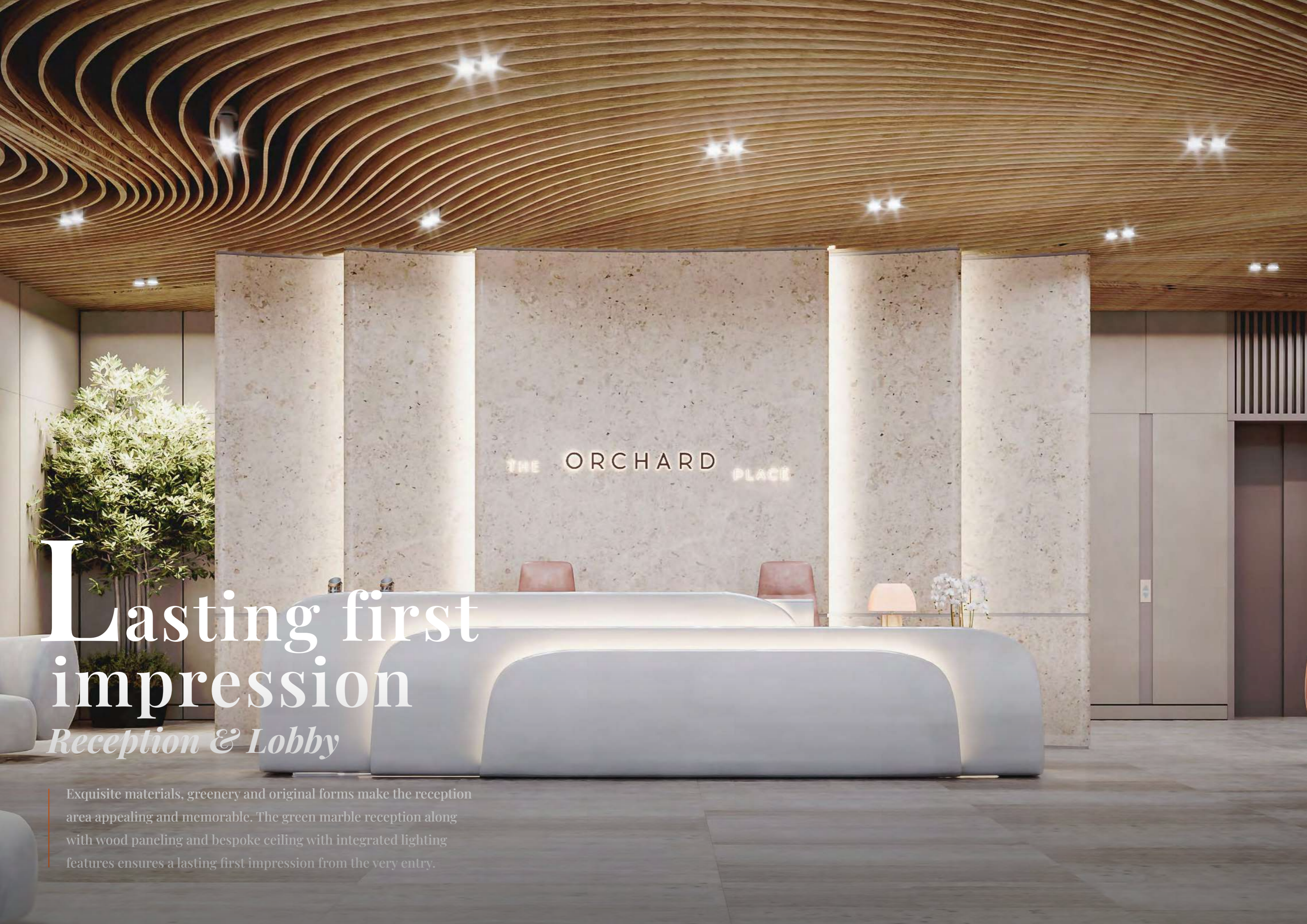
**The Orchard Place** is set in open, fluid spaces, that lift the spirit and create an immediate sense of belonging.



# Step into the Public Spaces of

## THE **ORCHARD** PLACE

The entire living experience was carefully shaped from the reception space to public areas and apartments, ensuring that the places we create has enduring value and a positive impact on you and your beloved ones. Wherever you are sitting in the lobby, walking towards the pool or on the promenade outside, it should always feel like home.



# Lasting first impression

*Reception & Lobby*

Exquisite materials, greenery and original forms make the reception area appealing and memorable. The green marble reception along with wood paneling and bespoke ceiling with integrated lighting features ensures a lasting first impression from the very entry.

## THE ORCHARD PLACE



# Experience Through Design



## *Bridging comfort & aesthetics*

Experience the essence of comfortable living through design elements. The European-inspired lobby with designer furniture and accessories is creating a delightful space for you and your guests.



# Supporting your healthy lifestyle

*Gym with terrace for Yoga*



The spacious gym is carefully designed to fully support your healthy lifestyle. The gym offers a well-equipped area with needed amenities and a visually appealing atmosphere to make time spent at the gym even more enjoyable and desirable. Along with the best equipment you will find a big terrace for yoga and stretching, changing rooms with saunas, and steam rooms.



# KIDS CLUB

## *The best place for fun*

The two-level kids club for the most precious visitors is carefully designed to create an atmosphere they can enjoy throughout the day, with all types of activities children of different ages enjoy! The big, fully equipped space with an outdoor playground and kids' swimming pool is located in a way that parents can enjoy their leisure time at the swimming pool while watching their kids.





# Cluster for Joyful Activities

*Kids pool*



# Communal space

*For socialization & memorable events*

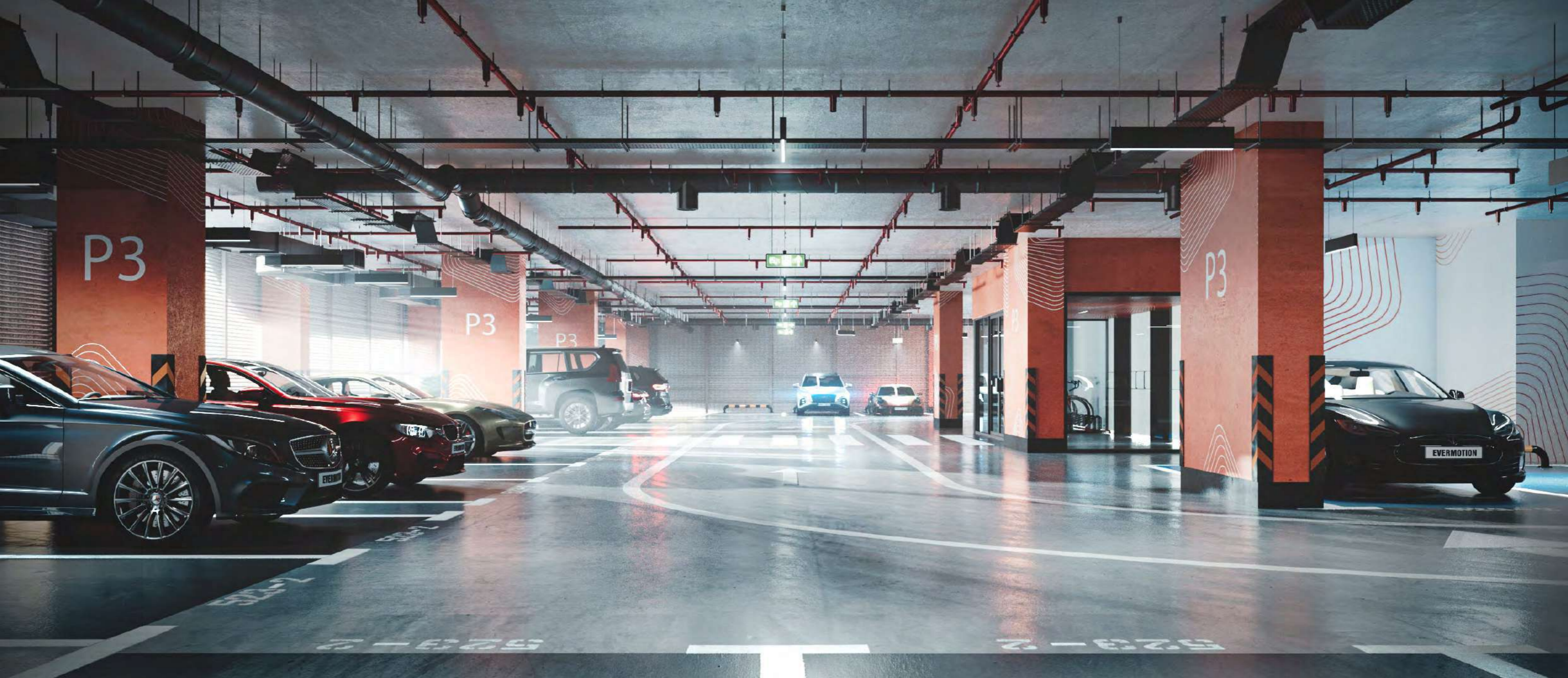
This multifunctional space offers the perfect opportunity with communal tables and a kitchenette, for co-working, communication, socialization and even hosting events and workshops.

# Multifunctional space for special occasions

*Place to meet and socialize*



THE ORCHARD PLACE



# Convenience at mind

## *Parking Area*

A well designed parking space supports the notion of delivering convenience and comfort to the owners of **The Orchard Place** apartments



# Step into the Apartments of

THE **ORCHARD** PLACE

While the building and open spaces have an exciting, lively rhythm, the apartment interiors have a more sophisticated feel of gracefulness and timelessness. The aesthetic manifests itself through the creative use of space, exquisite materials, thoughtful design and detailing.

# Indulge Yourself in a Premium Lifestyle

## *Studio Apartments with Bespoke Design elements*

Studio apartments offer modern design solved with high-quality finishes. All apartments come in wooden flooring, contemporarily designed kitchens with artificial stone furnishing, backwalls, island and quality in-build appliances.



Step inside  
apartments full of  
ample sunlight



# The vibrancy of your Light-filled apartments

Every apartment offers a floor to ceiling windows and lets in maximum sunlight. The spacious balconies in each apartment are designed to make you feel comfortable on the fresh air.





# Enjoy a life of supreme comfort

*Feels like home*

Every aspect of comfortable living was carefully planned for you. All you have to do is to enjoy everyday in your The Orchid Place apartment.



# Artfully crafted to deliver maximum comfort

The unique color scheme and harmonious balance of different decorative materials create an elegant and sophisticated space, which is enriched with decorative elements. The visual side comes in line with carefully planned functionality and practicality that together deliver maximum comfort to owners





# Presence of unique ambiance



A striking quality of the apartments is the attention to detail: the intricacy of design and the uncompromising level of craftsmanship. Enjoy a life of supreme comfort and ease in modern-luxurious, light-filled spaces that have been meticulously designed to meet your every need.



# Design that meets your lifestyle

The interior unveils the gift of modern luxury- living in a state of comfort and convenience, wherein every detail serves one purpose- the comfort and well-being of the owner. Different decorative materials fill the ample, light-filled space to create a unique and refined environment that brides modern aesthetics with a touch of modern luxury.

# Refined Aesthetics

## *For Comfortable Living*

An almost poetic appeal guide through the modern interior, wherein serenity is the overriding feeling at the sight. It impresses with its light and airy aesthetics, modern and welcoming atmosphere that is achieved with the use of light color pallet, natural materials, lustful furniture and decorative objects with a chic appeal. The combination of all these elements brings a luxurious atmosphere that is far from ostentatious. Instead, it is characterized by its refined and comfortable side that reigns in every room of the house, from the bespoke kitchen to the living room.



# Elegance & Sophistication Redefined

## *A supreme living environment*

A soft and serene neutral color palette as well as a variety of textures creates a delightful and comfortable ambiance. Every aspect is carefully crafted to create a supreme living environment day & night.

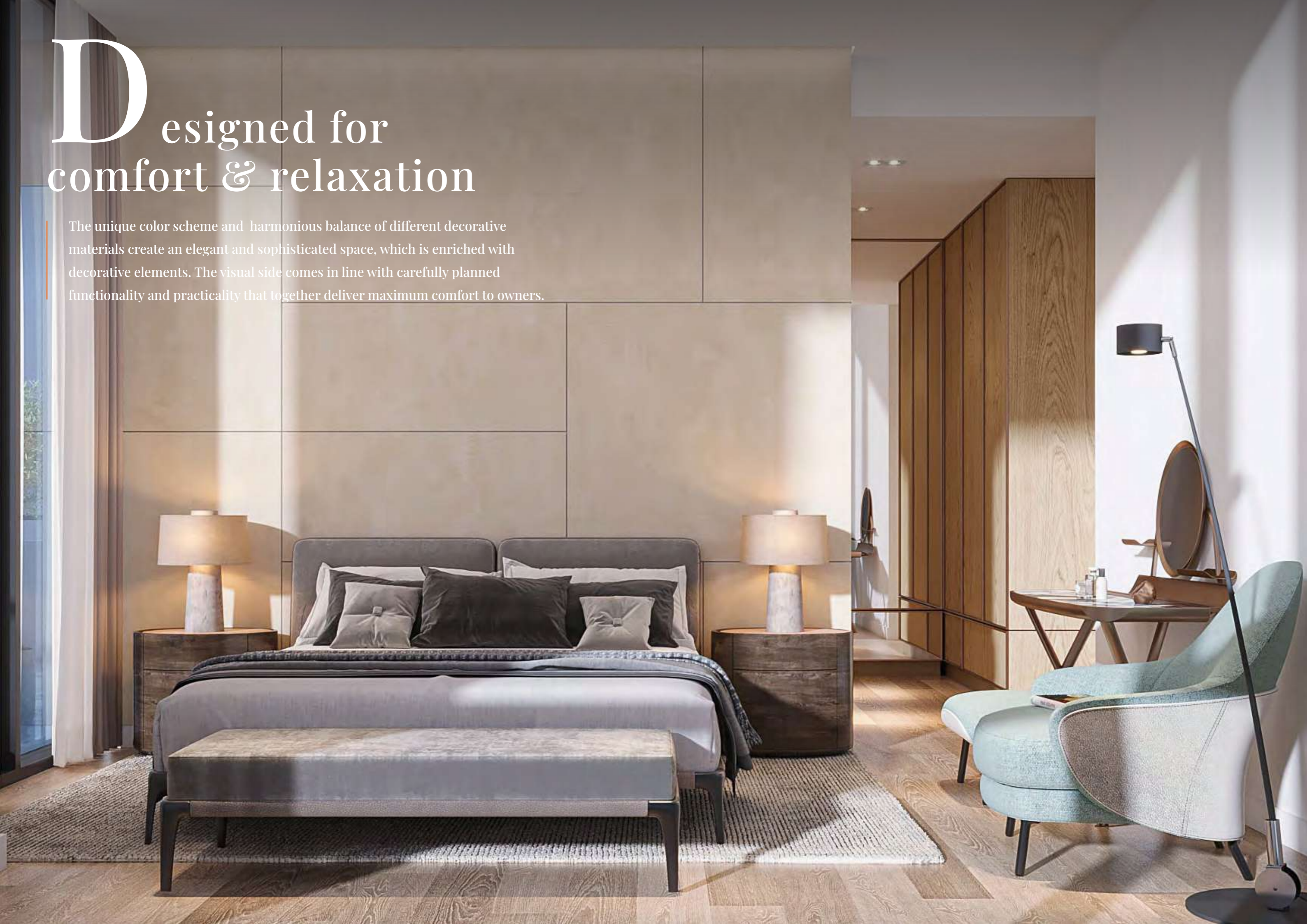




Refined style &  
reinvented elegance

# Designed for comfort & relaxation

The unique color scheme and harmonious balance of different decorative materials create an elegant and sophisticated space, which is enriched with decorative elements. The visual side comes in line with carefully planned functionality and practicality that together deliver maximum comfort to owners.





# Comfort under control

*Designed to aid  
relaxation & wellness*





# Enjoy the best views!

*The positive vibrancy of the horizon*

Every room offers floor-to-ceiling windows and space filled with ample sunlight. Moving upward each store opens up better views and a mesmerizing skyline.



# Private sanctuary

*A convenient place to refresh*



Every bathroom offers high-quality finishes and Italian fixtures. The overall design, Furniture, materials, and color pallet are thought carefully to guarantee maximum comfort and convenience.



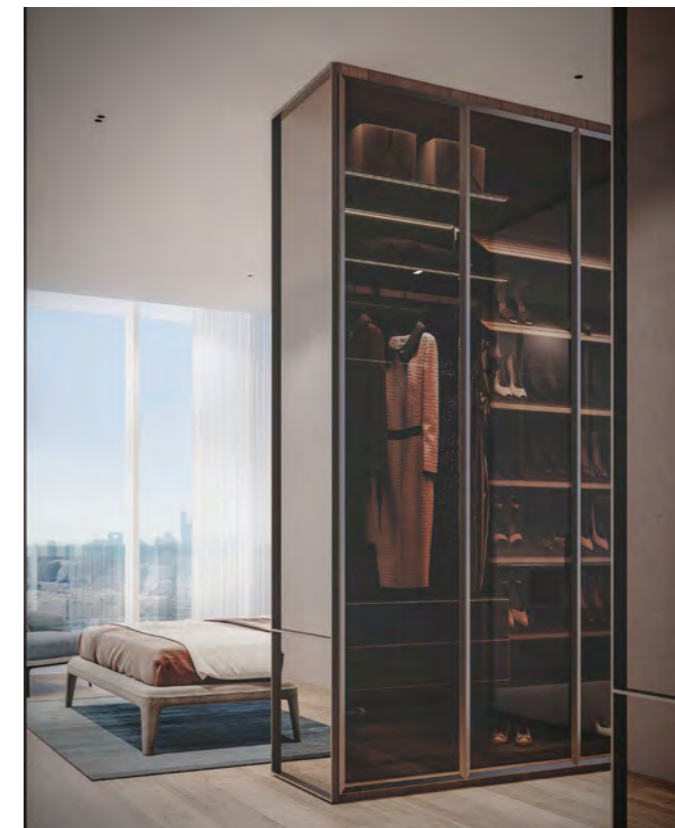
# Above the skyline

*Observe the amazing skyline from  
your loft-style penthouse!*

From the spacious terraces with personal pools and comfortable arrangements, you can enjoy the mesmerizing scenery throughout the day& night.

# The gift of modern luxury

*Request the best for  
comfortable living*



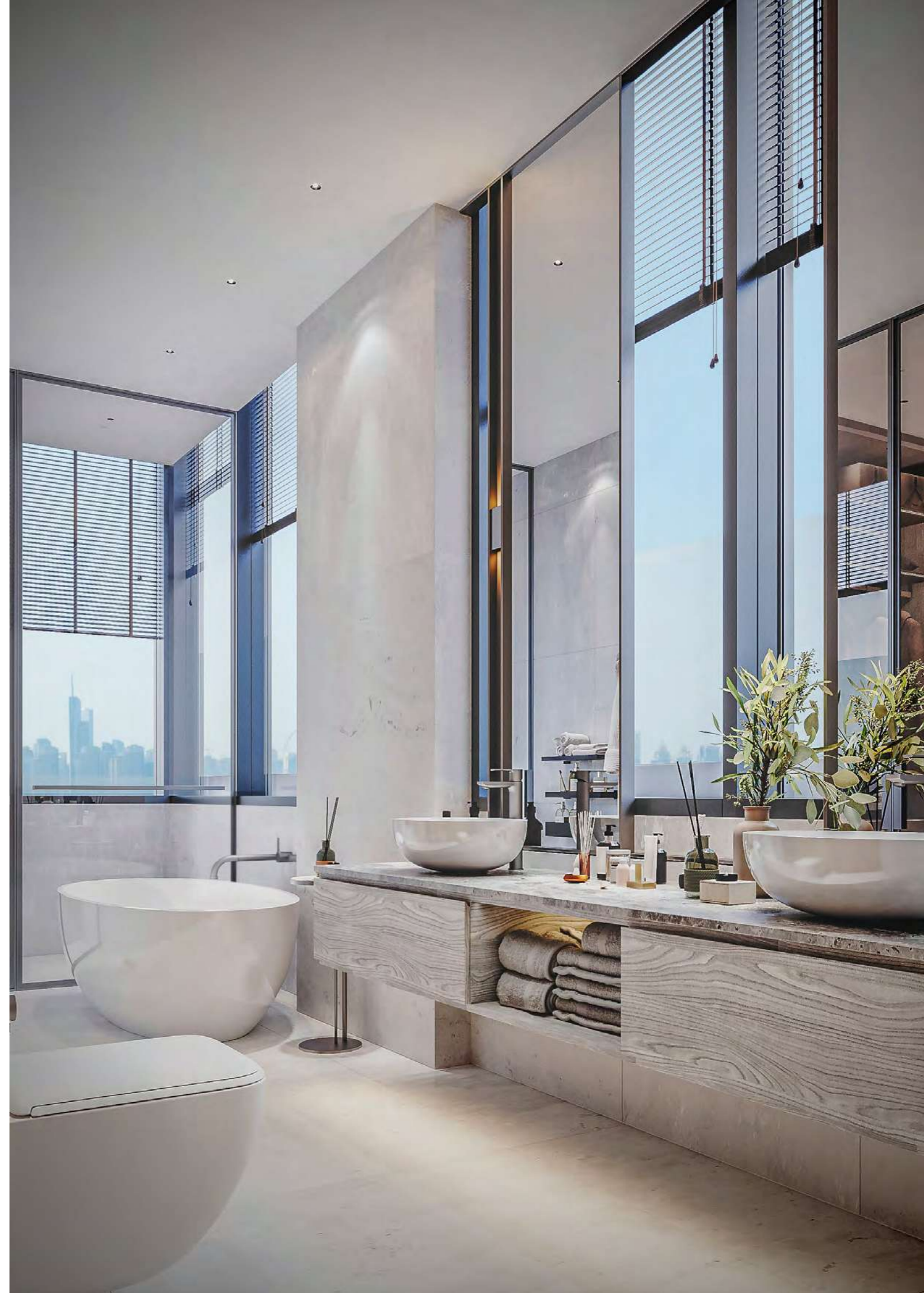
The harmonious interplay of materials and textures support the aim to converge strong and subtle aesthetics and create unique and harmonious environment for the residents.

# Designed for premium lifestyle

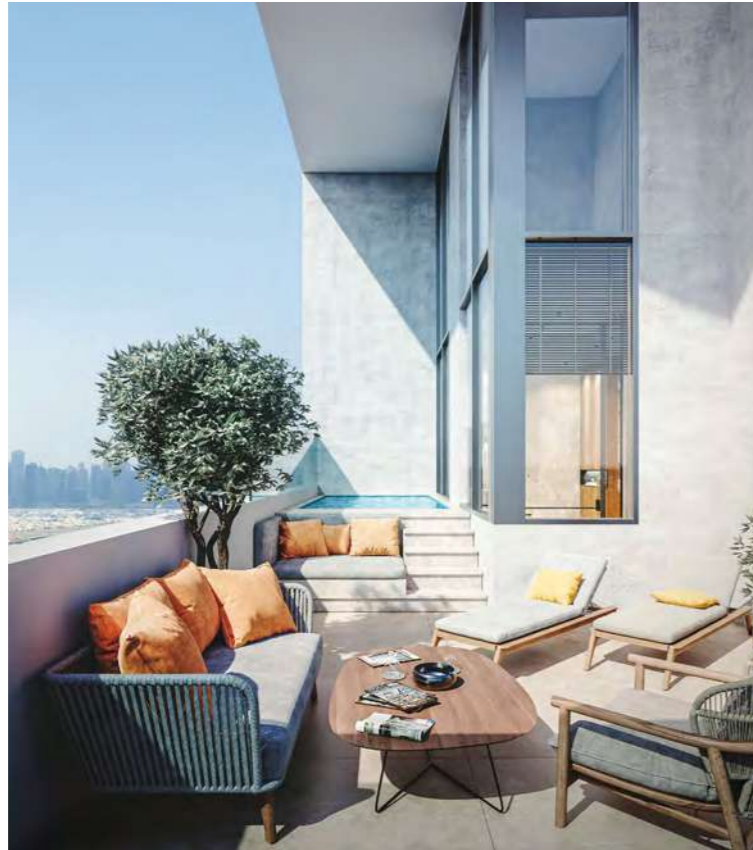
*Light-filled  
spacious sanctuary*



Every detail is set together to create a unique space that aids relaxation and wellness. Light-filled spacious space with light color palette, bathtub and two basins is crafted to create ultimate space to support your premium lifestyle.



Simply feel better  
stepping outside



*Embrace the Essence  
of Premium Lifestyle*

The spacious terrace with the private pool, plentiful space for lounge & dining along with greenery is carefully designed to create the ultimate space for spending quality time and relaxation.



# Robust style with a subtle touch



## *All you need for the unique lifestyle*

Rough, industrial style materials united with different design approaches, in order to create bespoke and comfortable atmosphere.





# The presence of individual character

*Abundance of open space and industrial elements*



Mood takes priority in every corner of the interior. The harmonious interplay of materials and textures support the aim to converge strong and subtle aesthetics and create unique and harmonious environment for the residents.

THE **ORCHARD** PLACE